

CD3e Monoclonal Antibody (145-2C11), Functional Grade, eBioscience™

Product Details	
Size	100 µg
Species Reactivity	Mouse
Published Species	Mouse, Human
Host/Isotope	Armenian hamster / IgG
Recommended Isotype Control	Armenian Hamster IgG Isotype Control (eBio299Arm), Functional Grade, eBioscience™
Class	Monoclonal
Type	Antibody
Clone	145-2C11
Conjugate	Functional Grade
Form	Liquid
Concentration	1 mg/mL
Purification	Affinity chromatography
Storage buffer	PBS, pH 7.2
Contains	no preservative
Storage Conditions	4° C
RRID	AB_468847

Applications	Tested Dilution	Publications
Flow Cytometry (Flow)	0.5 µg/test	78 Publications
Functional Assay (FN)	Assay-Dependent	80 Publications
Blocking Assay (BLOCK)	-	2 Publications
ChIP assay (ChIP)	-	1 Publication
ELISA (ELISA)	-	2 Publications
Immunofluorescence (IF)	-	2 Publications
Immunohistochemistry (Frozen) (IHC (F))	-	3 Publications
Immunohistochemistry (IHC)	-	3 Publications
Immunohistochemistry (Paraffin) (IHC (P))	-	1 Publication
In vitro Assay (IV)	-	4 Publications
Miscellaneous PubMed (Misc)	-	1 Publication

Product Specific Information

Description: The 145-2C11 monoclonal antibody reacts with mouse CD3e, a 20 kDa subunit of the TCR complex. Along with the other CD3 subunits, gamma and delta, the epsilon chain is required for proper assembly, trafficking and surface expression of the

TCR complex. CD3 is expressed by thymocytes in a developmentally regulated manner and by all mature T cells. Binding of 145-2C11 to TCR initiates the intracellular biochemical pathway resulting in cellular activation, proliferation, and apoptosis depending on specific conditions utilized. 145-2C11 is commonly used as a phenotypic marker for mouse T cells.

Applications Reported: The 145-2C11 antibody has been reported for use in flow cytometric analysis. It has also been reported in cell activation and cell depletion. Please visit the Best Protocols webpage to view a protocol for in vitro T-cell activation.

Applications Tested: The 145-2C11 antibody has been tested by flow cytometric analysis of mouse splenocytes. This can be used at less than or equal to 0.5 µg per test. A test is defined as the amount (µg) of antibody that will stain a cell sample in a final volume of 100 µL. Cell number should be determined empirically but can range from 10⁵ to 10⁸ cells/test. It is recommended that the antibody be carefully titrated for optimal performance in the assay of interest.

Storage and handling: Use in a sterile environment.

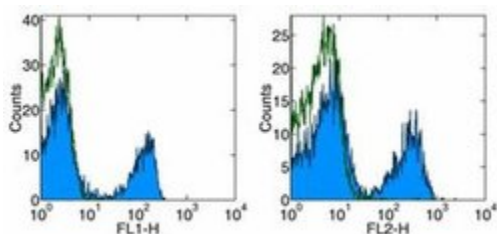
Filtration: 0.2 µm post-manufacturing filtered.

Purity: Greater than 90%, as determined by SDS-PAGE.

Endotoxin Level: Less than 0.001 ng/µg antibody, as determined by LAL assay.

Aggregation: Less than 10%, as determined by HPLC.

Product Images For CD3e Monoclonal Antibody (145-2C11), Functional Grade, eBioscience™



CD3e Antibody (16-0031-82) in Flow

Staining of mouse splenocytes with Anti-Mouse CD3e FITC (left) or PE (right). Appropriate isotype controls were used (open histogram). Total viable cells were used for analysis.

Flow Cytometry (78)

Immunoendocrinology (Houston, Tex.)

PD-1 pathway-mediated regulation of islet-specific CD4⁺ T cell subsets in autoimmune diabetes.

"16-0031 was used in Flow cytometry/Cell sorting to understand the role of PD-1 in maintaining islet-specific tolerance in diabetes-resistant strains."

Authors: Martinov T, Spanier JA, Pauken KE, Fife BT

Species
Mouse

Dilution
Not Cited

Year
2020

Journal of the American Heart Association

K_{Ca}3.1 Channels Promote Cardiac Fibrosis Through Mediating Inflammation and Differentiation of Monocytes Into Myofibroblasts in Angiotensin II -Treated Rats.

"16-0031 was used in Flow cytometry/Cell sorting to evaluate the impact of the specific KCa3.1 channel blocker TRAM-34 on cardiac fibrosis."

Authors: She G, Ren YJ, Wang Y, Hou MC, Wang HF, Gou W, Lai BC, Lei T, Du XJ, Deng XL

Species
Mouse

Dilution
Not Cited

Year
2019

[View more Flow references on thermofisher.com](#)

Functional Assay (80)

Oncoimmunology

CD1b-autoreactive T cells recognize phospholipid antigens and contribute to antitumor immunity against a CD1b⁺ T cell lymphoma.

"16-0031 was used in Functional assays to demonstrate the antitumor potential of CD1b-autoreactive T cells and their potential use in adoptive immunotherapy."

Authors: Bagchi S, Li S, Wang CR

Species
Mouse

Dilution
Not Cited

Year
2020

Chinese medicine

Glossogyne tenuifolia (Hsiang-ju) extract suppresses T cell activation by inhibiting activation of c-Jun N-terminal kinase.

"16-0031 was used in Functional assays to study how anti-inflammatory effects exerted by GTE are mediated via suppression of JNK phosphorylation in T cell activation."

Authors: Houg JY, Tai TS, Hsu SC, Hsu HF, Hwang TS, Lin CJ, Fang LW

Species
Mouse

Dilution
Not Cited

Year
2020

[View more FN references on thermofisher.com](#)

More applications with references on thermofisher.com

IF (2) IHC (3) CHIP (1) BLOCK (2) ELISA (2) Misc (1) IV (4) IHC (F) (3) IHC (P) (1)

For Research Use Only. Not for use in diagnostic procedures. Not for resale without express authorization. Products are warranted to operate or perform substantially in conformance with published Product specifications in effect at the time of sale, as set forth in the Production documentation, specifications and/or accompanying package inserts ("Documentation"). No claim of suitability for use in applications regulated by FDA is made. The warranty provided herein is valid only when used by properly trained individuals. Unless otherwise stated in the Documentation, this warranty is limited to one year from date of shipment when the Product is subjected to normal, proper and intended usage. This warranty does not extend to anyone other than the Buyer. Any model or sample furnished to Buyer is merely illustrative of the general type and quality of goods and does not represent that any Product will conform to such model or sample. NO OTHER WARRANTIES, EXPRESS OR IMPLIED, ARE GRANTED INCLUDING WITHOUT LIMITATION, IMPLIED WARRANTIES OF MERCHANTABILITY, FITNESS FOR ANY PARTICULAR PURPOSE, OR NON INFRINGEMENT. BUYER'S EXCLUSIVE REMEDY FOR NON-CONFORMING PRODUCTS DURING THE WARRANTY PERIOD IS LIMITED TO REPAIR, REPLACEMENT OF OR REFUND FOR THE NON-CONFORMING PRODUCT(S) AT SELLER'S SOLE OPTION. THERE IS NO OBLIGATION TO REPAIR, REPLACE OR REFUND FOR PRODUCTS AS THE RESULT OF (I) ACCIDENT, DISASTER OR EVENT OF FORCE MAJEURE, (II) MISUSE, FAULT OR NEGLIGENCE OF OR BY BUYER, (III) USE OF THE PRODUCTS IN A MANNER FOR WHICH THEY WERE NOT DESIGNED, OR (IV) IMPROPER STORAGE AND HANDLING OF THE PRODUCTS. Unless otherwise expressly stated on the Product or in the documentation accompanying the Product, the Product is intended for research only and is not to be used for any other purpose, including without limitation, unauthorized commercial uses, in vitro diagnostic uses, ex vivo or in vivo therapeutic uses, or any type of consumption by or application to human or animals.