

CD39 Monoclonal Antibody (24DMS1), Functional Grade, eBioscience™

Product Details	
Size	200 µg
Species Reactivity	Mouse
Published Species	Mouse
Host/Isotype	Rat / IgG2b, kappa
Recommended Isotype Control	Rat IgG2b kappa Isotype Control (eB149/10H5), Functional Grade, eBioscience™
Class	Monoclonal
Type	Antibody
Clone	24DMS1
Conjugate	Functional Grade
Form	Liquid
Concentration	1 mg/mL
Purification	Affinity chromatography
Storage buffer	PBS, pH 7.2
Contains	no preservative
Storage conditions	4° C
RRID	AB_1210685

Applications	Tested Dilution	Publications
Western Blot (WB)	0.06 µg/test	1 Publication
Flow Cytometry (Flow)	0.06 µg/test	10 Publications
Functional Assay (FN)	Assay-Dependent	-
Control (Ctrl)	Assay-Dependent	-

Product Specific Information

Description: The 24DMS1 monoclonal antibody reacts with mouse CD39, also known as NTPDase1. E-NTPDases are enzymes that convert nucleoside tri- and diphosphates (NDTPs) into nucleoside monophosphate (NMP), thereby removing toxic extracellular ATP and ADP. CD39 is the dominant member of this family in the immune system and is involved in suppression of inflammation and control of platelet activation. CD39 can impact expression of CD73, another E-NTPase. Together, these molecules influence inflammation responses. CD39 is expressed on B cells, Langerhans cells and most monocytes. In addition, CD39 is found on a subset of CD4+ T cells that are mostly CD25+FoxP3+ T reg cells. T reg cells from CD39-null mice showed impaired suppressive properties in vitro and in vivo.

Applications Reported: This 24DMS1 antibody has been reported for use in flow cytometric analysis, and immunoblotting (WB).

Applications Tested: This 24DMS1 antibody has been tested by flow cytometric analysis of mouse splenocytes and by WB. This can be used at less than or equal to 0.06 µg per test. A test is defined as the amount (µg) of antibody that will stain a cell sample in a final volume of 100 µL. Cell number should be determined empirically but can range from 10⁵ to 10⁸ cells/test. It is recommended that the antibody be carefully titrated for optimal performance in the assay of interest.

This antibody is provided as a functional grade but has not been tested in functional assay yet.

Storage and handling: Use in a sterile environment.

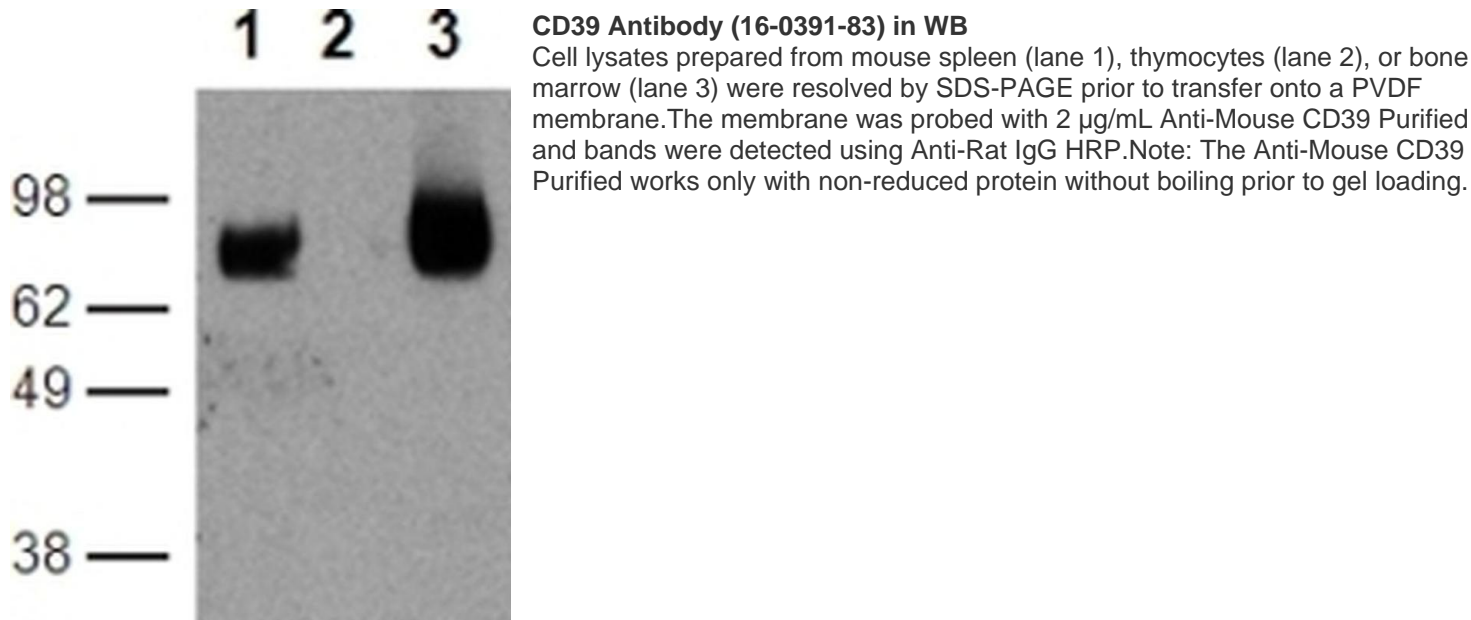
Filtration: 0.2 µm post-manufacturing filtered.

Purity: Greater than 90%, as determined by SDS-PAGE.

Endotoxin Level: Less than 0.001 ng/µg antibody, as determined by LAL assay.

Aggregation: Less than 10%, as determined by HPLC.

Product Images For CD39 Monoclonal Antibody (24DMS1), Functional Grade, eBioscience™



[View more figures on thermofisher.com](#)

Western Blot (1)

Frontiers in immunology	Year 2020
Toll-Like Receptor-Mediated Activation of CD39 Internalization in BMDCs Leads to Extracellular ATP Accumulation and Facilitates P2X7 Receptor Activation.	
"Published figure using CD39 monoclonal antibody (Product # 16-0391-83) in Flow Cytometry"	
Authors: Zhao R,Qiao J,Zhang X,Zhao Y,Meng X,Sun D,Peng X	

Flow Cytometry (10)

Frontiers in immunology	Year 2020
Toll-Like Receptor-Mediated Activation of CD39 Internalization in BMDCs Leads to Extracellular ATP Accumulation and Facilitates P2X7 Receptor Activation.	
"Published figure using CD39 monoclonal antibody (Product # 16-0391-83) in Flow Cytometry"	
Authors: Zhao R,Qiao J,Zhang X,Zhao Y,Meng X,Sun D,Peng X	

Purinergic signalling	Year 2019
Selective deletion of ENTPD1/CD39 in macrophages exacerbates biliary fibrosis in a mouse model of sclerosing cholangitis.	
"Published figure using CD39 monoclonal antibody (Product # 16-0391-83) in Flow Cytometry"	
Authors: Rothweiler S,Feldbrügge L,Jiang ZG,Csizmadia E,Longhi MS,Vaid K,Enyoloji K,Popov YV,Robson SC	

[View more Flow references on thermofisher.com](#)

More applications with references on thermofisher.com

For Research Use Only. Not for use in diagnostic procedures. Not for resale without express authorization. Products are warranted to operate or perform substantially in conformance with published Product specifications in effect at the time of sale, as set forth in the Production documentation, specifications and/or accompanying package inserts ("Documentation"). No claim of suitability for use in applications regulated by FDA is made. The warranty provided herein is valid only when used by properly trained individuals. Unless otherwise stated in the Documentation, this warranty is limited to one year from date of shipment when the Product is subjected to normal, proper and intended usage. This warranty does not extend to anyone other than the Buyer. Any model or sample furnished to Buyer is merely illustrative of the general type and quality of goods and does not represent that any Product will conform to such model or sample. NO OTHER WARRANTIES, EXPRESS OR IMPLIED, ARE GRANTED INCLUDING WITHOUT LIMITATION, IMPLIED WARRANTIES OF MERCHANTABILITY, FITNESS FOR ANY PARTICULAR PURPOSE, OR NON INFRINGEMENT. BUYER'S EXCLUSIVE REMEDY FOR NON-CONFORMING PRODUCTS DURING THE WARRANTY PERIOD IS LIMITED TO REPAIR, REPLACEMENT OF OR REFUND FOR THE NON-CONFORMING PRODUCT(S) AT SELLER'S SOLE OPTION. THERE IS NO OBLIGATION TO REPAIR, REPLACE OR REFUND FOR PRODUCTS AS THE RESULT OF (I) ACCIDENT, DISASTER OR EVENT OF FORCE MAJEURE, (II) MISUSE, FAULT OR NEGLIGENCE OF OR BY BUYER, (III) USE OF THE PRODUCTS IN A MANNER FOR WHICH THEY WERE NOT DESIGNED, OR (IV) IMPROPER STORAGE AND HANDLING OF THE PRODUCTS. Unless otherwise expressly stated on the Product or in the documentation accompanying the Product, the Product is intended for research only and is not to be used for any other purpose, including without limitation, unauthorized commercial uses, in vitro diagnostic uses, ex vivo or in vivo therapeutic uses, or any type of consumption by or application to human or animals.