

CD366 (TIM3) Monoclonal Antibody (8B.2C12), Functional Grade, eBioscience

Product Details	
Size	500 µg
Species Reactivity	Mouse
Published Species	Mouse
Host/Isotype	Rat / IgG1, kappa
Recommended Isotype Control	Rat IgG1 kappa Isotype Control (eBRG1), Functional Grade, eBioscience
Class	Monoclonal
Type	Antibody
Clone	8B.2C12
Conjugate	Functional Grade
Form	Liquid
Concentration	1 mg/mL
Purification	Affinity chromatography
Storage buffer	PBS, pH 7.2
Contains	no preservative
Storage Conditions	4° C
RRID	AB_469105

Applications	Tested Dilution	Publications
Immunohistochemistry (IHC)	-	1 Publication
Flow Cytometry (Flow)	0.5 µg/test	2 Publications
Neutralization (Neu)	-	2 Publications
Functional Assay (FN)	Assay-Dependent	2 Publications
Miscellaneous PubMed (Misc)	-	1 Publication

Product Specific Information

Description: The 8B.2C12 monoclonal antibody reacts with mouse CD366 (TIM3), a Th1-specific cell surface protein. CD366 is a type I transmembrane protein and contains an immunoglobulin and a mucin-like domain in its extracellular portion and a tyrosine phosphorylation motif in its cytoplasmic portion. CD366 is expressed selectively by differentiated CD4+ Th1 and CD8+ Tc1, but is absent on Th2 and Tc2. Other hematopoietic cell types, including naive T cells, B cells, macrophages and dendritic cells, do not express CD366, at least at the protein level. Expression of CD366 is upregulated at a late stage of T cell differentiation on Th1 cells after 3 rounds of in vitro polarization suggesting a role for this molecule in the transport or effector function of Th1 cells rather than a contribution to T cell differentiation. In an experimental autoimmune encephalomyelitis (EAE) model, CD366 was shown to be expressed on most CD4+ and CD8+ T cells in the central nervous system at the onset of clinical signs of disease, while less than 2% of CD4+ cells in the periphery expressed CD366 after immunization. In this model, in vivo administration of 8B.2C12 resulted in a hyperacute and atypical disease phenotype. It is postulated that the engagement of CD366 during T cell activation results in the expansion and activation of macrophages and increased severity of autoimmune disease. The Tim gene family may

have an important role in the regulation of autoimmunity and allergies.

The 8B.2C12 antibody binds to the BALB/c allele of CD366 while reactivity to the C57Bl/6 allele is significantly weaker.

Applications Reported: 8B.2C12 has been reported for use in flow cytometric analysis and functional studies.

Applications Tested: The 8B.2C12 antibody has been tested by flow cytometric analysis of mouse splenocytes and mouse Tim-3 transfected cells and can be used at less than or equal to 0.5 µg per test. A test is defined as the amount (µg) of antibody that will stain a cell sample in a final volume of 100 µL. Cell number should be determined empirically but can range from 10⁵ to 10⁸ cells /test. It is recommended that the antibody be carefully titrated for optimal performance in the assay of interest.

Storage and handling: Use in a sterile environment.

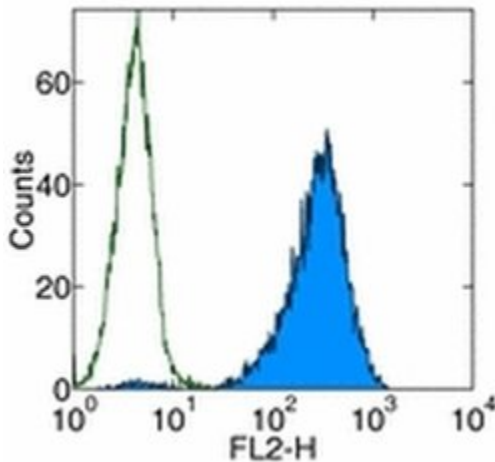
Filtration: 0.2 µm post-manufacturing filtered.

Purity: Greater than 90%, as determined by SDS-PAGE.

Endotoxin Level: Less than 0.001 ng/µg antibody, as determined by LAL assay.

Aggregation: Less than 10%, as determined by HPLC.

Product Images For CD366 (TIM3) Monoclonal Antibody (8B.2C12), Functional Grade, eBioscience



CD366 (TIM3) Antibody (16-5871-85) in Flow

Staining of CD366 transfected cells with Rat IgG1 K Isotype Control Functional Grade Purified (Product # 16-4301-81) (open histogram) or Anti-Mouse CD366 (TIM-3) Functional Grade Purified (filled histogram) followed by Anti-Rat IgG Biotin (Product # 13-4813-85) and Streptavidin PE (Product # 12-4317-87). Total viable cells were used for analysis.

8 References

Immunohistochemistry (1)

Journal of immunology (Baltimore, Md. : 1950)

Cutting edge: atopy promotes Th2 responses to alloantigens and increases the incidence and tempo of corneal allograft rejection.

Authors: Beaugregard C, Stevens C, Mayhew E, Niederkorn JY

Species
Not Applicable

Dilution
Not Cited

Year
2005

Flow Cytometry (2)

Journal of immunology (Baltimore, Md. : 1950)

Cutting edge: T cell Ig mucin-3 reduces inflammatory heart disease by increasing CTLA-4 during innate immunity.

Authors: Frisancho-Kiss S, Nyland JF, Davis SE, Barrett MA, Gatewood SJ, Njoku DB, Cihakova D, Silbergeld EK, Rose NR, Fairweather D

Species
Not Applicable

Dilution
Not Cited

Year
2006

Nature communications

Rational combination of oncolytic vaccinia virus and PD-L1 blockade works synergistically to enhance therapeutic efficacy.

"Published first using CD366 (TIM3) monoclonal antibody (Product # 16-5871-85) in Flow Cytometry"

Authors: Liu Z, Ravindranathan R, Kalinski P, Guo ZS, Bartlett DL

Species
Not Applicable

Dilution
Not Cited

Year
2017

Neutralization (2)

BMC infectious diseases

Enhanced upper genital tract pathologies by blocking Tim-3 and PD-L1 signaling pathways in mice intravaginally infected with Chlamydia muridarum.

Authors: Peng B, Lu C, Tang L, Yeh IT, He Z, Wu Y, Zhong G

Species
Mouse
Not Applicable

Dilution
100 µg
Not Cited

Year
2011

More applications with references on thermofisher.com

FN (2)

Misc (1)

For Research Use Only. Not for use in diagnostic procedures. Not for resale without express authorization. Products are warranted to operate or perform substantially in conformance with published Product specifications in effect at the time of sale, as set forth in the Production documentation, specifications and/or accompanying package inserts ("Documentation"). No claim of suitability for use in applications regulated by FDA is made. The warranty provided herein is valid only when used by properly trained individuals. Unless otherwise stated in the Documentation, this warranty is limited to one year from date of shipment when the Product is subjected to normal, proper and intended usage. This warranty does not extend to anyone other than the Buyer. Any model or sample furnished to Buyer is merely illustrative of the general type and quality of goods and does not represent that any Product will conform to such model or sample. NO OTHER WARRANTIES, EXPRESS OR IMPLIED, ARE GRANTED INCLUDING WITHOUT LIMITATION, IMPLIED WARRANTIES OF MERCHANTABILITY, FITNESS FOR ANY PARTICULAR PURPOSE, OR NON INFRINGEMENT. BUYER'S EXCLUSIVE REMEDY FOR NON-CONFORMING PRODUCTS DURING THE WARRANTY PERIOD IS LIMITED TO REPAIR, REPLACEMENT OF OR REFUND FOR THE NON-CONFORMING PRODUCT(S) AT SELLER'S SOLE OPTION. THERE IS NO OBLIGATION TO REPAIR, REPLACE OR REFUND FOR PRODUCTS AS THE RESULT OF (I) ACCIDENT, DISASTER OR EVENT OF FORCE MAJEURE, (II) MISUSE, FAULT OR NEGLIGENCE OF OR BY BUYER, (III) USE OF THE PRODUCTS IN A MANNER FOR WHICH THEY WERE NOT DESIGNED, OR (IV) IMPROPER STORAGE AND HANDLING OF THE PRODUCTS. Unless otherwise expressly stated on the Product or in the documentation accompanying the Product, the Product is intended for research only and is not to be used for any other purpose, including without limitation, unauthorized commercial uses, in vitro diagnostic uses, ex vivo or in vivo therapeutic uses, or any type of consumption by or application to human or animals.