

CD282 (TLR2) Monoclonal Antibody (6C2), Functional Grade, eBioscience™

Product Details	
Size	50 µg
Species Reactivity	Mouse
Published Species	Mouse, Human
Host/Isotype	Rat / IgG2b, kappa
Recommended Isotype Control	Rat IgG2b kappa Isotype Control (eB149/10H5), Functional Grade, eBioscience™
Class	Monoclonal
Type	Antibody
Clone	6C2
Conjugate	Functional Grade
Form	Liquid
Concentration	1 mg/mL
Purification	Affinity chromatography
Storage buffer	PBS, pH 7.2
Contains	no preservative
Storage conditions	4° C
RRID	AB_469265

Applications	Tested Dilution	Publications
Immunohistochemistry (IHC)	-	3 Publications
Immunocytochemistry (ICC/IF)	-	2 Publications
Flow Cytometry (Flow)	1 µg/test	12 Publications
Neutralization (Neu)	-	4 Publications
Functional Assay (FN)	Assay-Dependent	2 Publications
Control (Ctrl)	Assay-Dependent	-
Inhibition Assays (IA)	-	1 Publication

Product Specific Information

Description: The 6C2 monoclonal antibody reacts with mouse Toll-like receptor 2 (TLR2). Mouse TLR2 is expressed by the myeloid lineage, including macrophage and dendritic cells in splenocytes and the RAW264.7 cell line. To date, at least twelve members of the Toll family have been identified in human and mouse. This family of type I transmembrane proteins is characterized by an extracellular domain with leucine-rich repeats and a cytoplasmic domain with homology to the type I IL-1 receptor. Two of these receptors, TLR2 and TLR4, are pattern recognition receptors and signaling molecules in response to bacterial lipoproteins and have been implicated in innate immunity and inflammation. TLR2 is expressed on the surface of cells and is responsible for distinguishing different pathogens.

Applications Reported: 6C2 has been reported for use in flow cytometric analysis. Unpublished preliminary studies indicate that this antibody may inhibit some aspects of monocyte activation through TLR2, however, it may not result in complete blocking of TLR2 function. For optimal flow cytometry staining with this antibody, it is recommended that a directly conjugated 6C2 (FITC, PE, or Biotin) be used in combination with FcR blocking with anti-mouse CD16/CD32 (clone 93, cat. 14-0161).

Applications Tested: The 6C2 antibody has been tested by flow cytometric analysis of mouse splenocytes or Raw264.7 cells. This can be used at less than or equal to 1 µg per test. A test is defined as the amount (µg) of antibody that will stain a cell sample in a final volume of 100 µL. Cell number should be determined empirically but can range from 10⁵ to 10⁸ cells/test. It is recommended that the antibody be carefully titrated for optimal performance in the assay of interest.

Storage and handling: Use in a sterile environment.

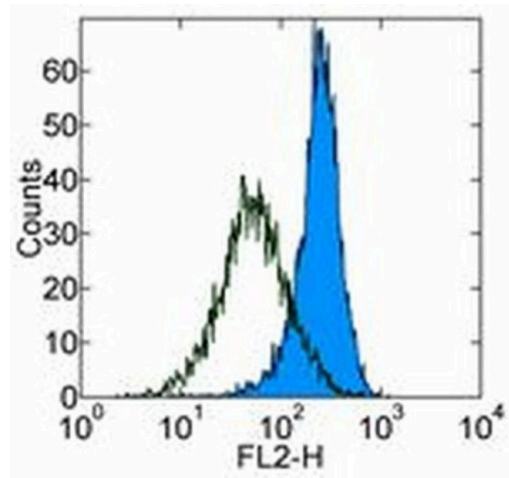
Filtration: 0.2 µm post-manufacturing filtered.

Purity: Greater than 90%, as determined by SDS-PAGE.

Endotoxin Level: Less than 0.001 ng/µg antibody, as determined by LAL assay.

Aggregation: Less than 10%, as determined by HPLC.

Product Images For CD282 (TLR2) Monoclonal Antibody (6C2), Functional Grade, eBioscience™



CD282 (TLR2) Antibody (16-9021-81) in Flow
Staining of Raw264.7 cells with 0.5 µg Rat IgG2b Isotype Control Functional Grade Purified (Product # 16-4031-81) (open histogram) or 0.5 µg Anti-Mouse CD282 (TLR2) Functional Grade Purified (filled histogram) followed by Anti-Rat IgG Biotin (Product # 13-4813-85) and Streptavidin PE (Product # 12-4317-87). Total viable cells were used for analysis.

[View more figures on thermofisher.com](https://thermofisher.com)

Immunohistochemistry (3)

<p>Journal of immunology (Baltimore, Md. : 1950)</p> <p>Protective role for TLR4 signaling in atherosclerosis progression as revealed by infection with a common oral pathogen.</p> <p>"Published figure using CD282 (TLR2) monoclonal antibody (Product # 16-9021-81) in Immunohistochemistry"</p> <p>Authors: Hayashi C,Papadopoulos G,Gudino CV,Weinberg EO,Barth KR,Madrigal AG,Chen Y,Ning H,LaValley M, Gibson FC,Hamilton JA,Genco CA</p>	<p>Year</p> <p>2012</p>
<p>The Journal of experimental medicine</p> <p>Increased endothelial expression of Toll-like receptor 2 at sites of disturbed blood flow exacerbates early atherogenic events.</p> <p>"Published figure using CD282 (TLR2) monoclonal antibody (Product # 16-9021-81) in Immunofluorescence"</p> <p>Authors: Mullick AE,Soldau K,Kiosses WB,Bell TA,Tobias PS,Curtiss LK</p>	<p>Year</p> <p>2008</p> <p>Species</p> <p>Mouse</p> <p>Dilution</p> <p>1:200</p>

[View more IHC references on thermofisher.com](#)

Immunocytochemistry (2)

<p>Scientific reports</p> <p>Spatial organization of FcR and TLR2/1 on phagosome membranes differentially regulates their synergistic and inhibitory receptor crosstalk.</p> <p>"Published figure using CD282 (TLR2) monoclonal antibody (Product # 16-9021-81) in Immunocytochemistry"</p> <p>Authors: Li W,Li M,Anthony SM,Yu Y</p>	<p>Year</p> <p>2021</p>
<p>BMC immunology</p> <p>Macrophage mediated recognition and clearance of Borrelia burgdorferi elicits MyD88-dependent and -independent phagosomal signals that contribute to phagocytosis and inflammation.</p> <p>"Published figure using CD282 (TLR2) monoclonal antibody (Product # 16-9021-81) in Immunocytochemistry"</p> <p>Authors: Benjamin SJ,Hawley KL,Vera-Licona P,La Vake CJ,Cervantes JL,Ruan Y,Radolf JD,Salazar JC</p>	<p>Year</p> <p>2021</p>

More applications with references on thermofisher.com

- Flow (12)
- Neu (4)
- FN (2)
- IA (1)

For Research Use Only. Not for use in diagnostic procedures. Not for resale without express authorization. Products are warranted to operate or perform substantially in conformance with published Product specifications in effect at the time of sale, as set forth in the Production documentation, specifications and/or accompanying package inserts ("Documentation"). No claim of suitability for use in applications regulated by FDA is made. The warranty provided herein is valid only when used by properly trained individuals. Unless otherwise stated in the Documentation, this warranty is limited to one year from date of shipment when the Product is subjected to normal, proper and intended usage. This warranty does not extend to anyone other than the Buyer. Any model or sample furnished to Buyer is merely illustrative of the general type and quality of goods and does not represent that any Product will conform to such model or sample. NO OTHER WARRANTIES, EXPRESS OR IMPLIED, ARE GRANTED INCLUDING WITHOUT LIMITATION, IMPLIED WARRANTIES OF MERCHANTABILITY, FITNESS FOR ANY PARTICULAR PURPOSE, OR NON INFRINGEMENT. BUYER'S EXCLUSIVE REMEDY FOR NON-CONFORMING PRODUCTS DURING THE WARRANTY PERIOD IS LIMITED TO REPAIR, REPLACEMENT OF OR REFUND FOR THE NON-CONFORMING PRODUCT(S) AT SELLER'S SOLE OPTION. THERE IS NO OBLIGATION TO REPAIR, REPLACE OR REFUND FOR PRODUCTS AS THE RESULT OF (I) ACCIDENT, DISASTER OR EVENT OF FORCE MAJEURE, (II) MISUSE, FAULT OR NEGLIGENCE OF OR BY BUYER, (III) USE OF THE PRODUCTS IN A MANNER FOR WHICH THEY WERE NOT DESIGNED, OR (IV) IMPROPER STORAGE AND HANDLING OF THE PRODUCTS. Unless otherwise expressly stated on the Product or in the documentation accompanying the Product, the Product is intended for research only and is not to be used for any other purpose, including without limitation, unauthorized commercial uses, in vitro diagnostic uses, ex vivo or in vivo therapeutic uses, or any type of consumption by or application to human or animals.