

# KLRG1 Monoclonal Antibody (13F12F2), Functional Grade, eBioscience™

Product Details	
Size	500 µg
Species Reactivity	Human
Published Species	Human
Host/Isotype	Mouse / IgG2a, kappa
Recommended Isotype Control	Mouse IgG2a kappa Isotype Control (eBM2a), Functional Grade, eBioscience™
Class	Monoclonal
Type	Antibody
Clone	13F12F2
Conjugate	Functional Grade
Form	Liquid
Concentration	1 mg/mL
Purification	Affinity chromatography
Storage buffer	PBS
Contains	no preservative
Storage conditions	4° C, store in dark, DO NOT FREEZE!
RRID	AB_2637116

Applications	Tested Dilution	Publications
Flow Cytometry (Flow)	0.5 µg/test	4 Publications
Functional Assay (FN)	Assay-Dependent	-

## Product Specific Information

Description: This 13F12F2 monoclonal antibody reacts with human killer cell lectin-like receptor subfamily G, member 1 (KLRG1), a type II transmembrane inhibitor receptor of the C-type lectin superfamily that contains an ITIM domain. This inhibitory receptor is expressed on subsets of gamma-delta T cells, NK (CD56dim), CD8+ and CD4+ T Cells. KLRG1 is expressed primarily by cells with an effector/memory phenotype that are short-lived, but capable of immediate effector cell function. Cadherin-E, -N, and -R are ligands for KLRG1. Cadherin/KLRG1 interaction inhibits cytolytic activity and proliferation. The percentage of KLRG1 positive cells can vary considerably, depending on antigen experience. The clones 13F12F2 and 13A2 appear to recognize a similar epitope based on cross-blocking studies.

This 13F12F2 antibody has been tested by flow cytometric analysis of human peripheral blood cells. This can be used at less than or equal to 0.5 µg per test. A test is defined as the amount (µg) of antibody that will stain a cell sample in a final volume of 100 µL. Cell number should be determined empirically but can range from 10<sup>5</sup> to 10<sup>8</sup> cells/test. It is recommended that the antibody be carefully titrated for optimal performance in the assay of interest.

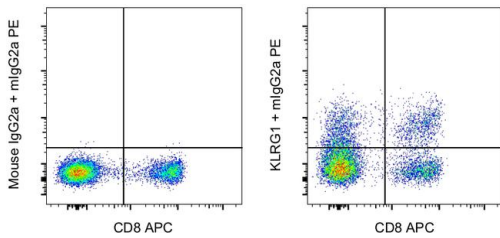
Filtration: 0.2 µm post-manufacturing filtered.

Purity: Greater than 90%, as determined by SDS-PAGE.

Endotoxin Level: Less than 0.001 ng/μg antibody, as determined by LAL assay.

Aggregation: Less than 10%, as determined by HPLC.

## Product Images For KLRG1 Monoclonal Antibody (13F12F2), Functional Grade, eBioscience™



### KLRG1 Antibody (16-9488-85) in Flow

Normal human peripheral blood cells were stained with CD8 Monoclonal Antibody, APC (Product # 17-0088-42) and 0.25 μg of Mouse IgG2a kappa Isotype Control (Product # 14-4724-85) (left) or 0.25 μg of KLRG1 Monoclonal Antibody, Functional Grade (right) followed by IgG2a Monoclonal Antibody, PE (Product # 12-4210-82). Cells in the lymphocyte gate were used for analysis.

## 4 References

### Flow Cytometry (4)

Cell reports. Medicine

#### Immune cell phenotypes associated with disease severity and long-term neutralizing antibody titers after natural dengue virus infection.

"16-9488-85 was used in Flow Cytometry to reveal associations between cellular profiles and disease severity, opening opportunities to study immunopathology in dengue disease and the potential predictive value of these parameters."

Authors: Rouers A, Chng MHY, Lee B, Rajapakse MP, Kaur K, Toh YX, Sathiakumar D, Loy T, Thein TL, Lim VWX, Singhal A, Yeo TW, Leo YS, Vora KA, Casimiro D, Lim B, Tucker-Kellogg L, Rivino L, Newell EW, Fink K

Species  
Human

Dilution  
Not Cited

Year  
2021

Nature communications

#### IL-1, IL-23, and TGF- drive plasticity of human ILC2s towards IL-17-producing ILCs in nasal inflammation.

"Published figure using KLRG1 monoclonal antibody (Product # 16-9488-85) in Flow Cytometry"

Authors: Golebski K, Ros XR, Nagasawa M, van Tol S, Heesters BA, Aglmous H, Kradolfer CMA, Shikhagaie MM, Seys S, Hellings PW, van Drunen CM, Fokkens WJ, Spits H, Bal SM

Species  
Not Applicable

Dilution  
Not Cited

Year  
2019

[View more Flow references on thermofisher.com](#)

For Research Use Only. Not for use in diagnostic procedures. Not for resale without express authorization. Products are warranted to operate or perform substantially in conformance with published Product specifications in effect at the time of sale, as set forth in the Production documentation, specifications and/or accompanying package inserts ("Documentation"). No claim of suitability for use in applications regulated by FDA is made. The warranty provided herein is valid only when used by properly trained individuals. Unless otherwise stated in the Documentation, this warranty is limited to one year from date of shipment when the Product is subjected to normal, proper and intended usage. This warranty does not extend to anyone other than the Buyer. Any model or sample furnished to Buyer is merely illustrative of the general type and quality of goods and does not represent that any Product will conform to such model or sample. NO OTHER WARRANTIES, EXPRESS OR IMPLIED, ARE GRANTED INCLUDING WITHOUT LIMITATION, IMPLIED WARRANTIES OF MERCHANTABILITY, FITNESS FOR ANY PARTICULAR PURPOSE, OR NON-INFRINGEMENT. BUYER'S EXCLUSIVE REMEDY FOR NON-CONFORMING PRODUCTS DURING THE WARRANTY PERIOD IS LIMITED TO REPAIR, REPLACEMENT OF OR REFUND FOR THE NON-CONFORMING PRODUCT(S) AT SELLER'S SOLE OPTION. THERE IS NO OBLIGATION TO REPAIR, REPLACE OR REFUND FOR PRODUCTS AS THE RESULT OF (I) ACCIDENT, DISASTER OR EVENT OF FORCE MAJEURE, (II) MISUSE, FAULT OR NEGLIGENCE OF OR BY BUYER, (III) USE OF THE PRODUCTS IN A MANNER FOR WHICH THEY WERE NOT DESIGNED, OR (IV) IMPROPER STORAGE AND HANDLING OF THE PRODUCTS. Unless otherwise expressly stated on the Product or in the documentation accompanying the Product, the Product is intended for research only and is not to be used for any other purpose, including without limitation, unauthorized commercial uses, in vitro diagnostic uses, ex vivo or in vivo therapeutic uses, or any type of consumption by or application to human or animals.