

CD3 Monoclonal Antibody (17A2), APC, eBioscience™

Product Details	
Size	100 µg
Species Reactivity	Mouse
Published Species	Rat, Mouse, Human
Host/Isotype	Rat / IgG2b, kappa
Recommended Isotype Control	Rat IgG2b kappa Isotype Control (eB149/10H5), APC, eBioscience™
Class	Monoclonal
Type	Antibody
Clone	17A2
Conjugate	APC
Excitation/Emission Max	651/660 nm
Form	Liquid
Concentration	0.2 mg/mL
Purification	Affinity chromatography
Storage buffer	PBS, pH 7.2
Contains	0.09% sodium azide
Storage conditions	4° C, store in dark, DO NOT FREEZE!
RRID	AB_10597589

Applications	Tested Dilution	Publications
Immunohistochemistry (IHC)	-	3 Publications
Immunohistochemistry (Paraffin) (IHC (P))	-	1 Publication
Immunocytochemistry (ICC/IF)	-	2 Publications
Flow Cytometry (Flow)	0.5 µg/test	112 Publications

Product Specific Information

Description: The 17A2 monoclonal antibody reacts with the mouse CD3 complex. CD3 subunits gamma, delta and epsilon are required for proper assembly, trafficking and surface expression of the TCR complex. CD3 is expressed by thymocytes in a developmentally regulated manner and by all mature T cells. Binding of 17A2 to CD3 initiates the intracellular biochemical pathway resulting in cellular activation and proliferation.

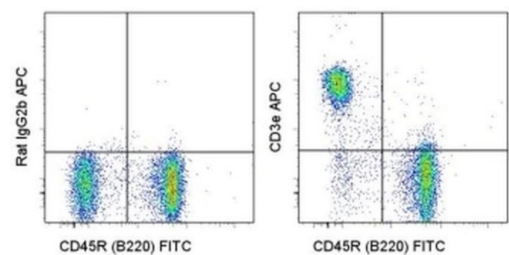
Applications Reported: This 17A2 antibody has been reported for use in flow cytometric analysis.

Applications Tested: This 17A2 antibody has been tested by flow cytometric analysis of mouse splenocytes. This can be used at less than or equal to 0.5 µg per test. A test is defined as the amount (µg) of antibody that will stain a cell sample in a final volume of 100 µL. Cell number should be determined empirically but can range from 10⁵ to 10⁸ cells/test. It is recommended that the antibody be carefully titrated for optimal performance in the assay of interest.

Excitation: 633-647 nm; **Emission:** 660 nm; **Laser:** Red Laser.

Filtration: 0.2 µm post-manufacturing filtered.

Product Images For CD3 Monoclonal Antibody (17A2), APC, eBioscience™



CD3 Antibody (17-0032-82) in Flow
Staining of C57Bl/6 splenocytes with Anti-Human/Mouse CD45R (B220) FITC (Product # 11-0452-82) and 0.25 µg of Rat IgG2b Isotype Control APC (Product # 17-4031-82) (left) or 0.25 µg of Anti-Mouse CD3 APC (right). Total viable cells were used for analysis.

[View more figures on thermofisher.com](#)

118 References

Immunohistochemistry (3)

Cancers Expression of CCRL2 Inhibits Tumor Growth by Concentrating Chemerin and Inhibiting Neoangiogenesis. "Published figure using CD3 monoclonal antibody (Product # 17-0032-82) in Immunohistochemistry" Authors: Al Delbany D,Robert V,Dubois-Vedrenne I,Del Prete A,Vernimmen M,Radi A,Lefort A,Libert F,Wittamer V, Sozzani S,Parmentier M	Year 2021 Species Mouse
Nature communications Therapeutic paradigm of dual targeting VEGF and PDGF for effectively treating FGF-2 off-target tumors. "17-0032 was used in Flow cytometry/Cell sorting to show that FGF-2 modulates tumor vessels by recruiting NG2+ pricytes onto tumor microvessels through a PDGFR-dependent mechanism." Authors: Hosaka K,Yang Y,Seki T,Du Q,Jing X,He X,Wu J,Zhang Y,Morikawa H,Nakamura M,Scherzer M,Sun X,Xu Y, Cheng T,Li X,Liu X,Li Q,Liu Y,Hong A,Chen Y,Cao Y	Year 2020 Species Mouse Dilution 1:50

[View more IHC references on thermofisher.com](#)

Immunohistochemistry (Paraffin) (1)

Clinical and translational medicine Functional inhibition of lactate dehydrogenase suppresses pancreatic adenocarcinoma progression. "Published figure using CD3 monoclonal antibody (Product # 17-0032-82) in Immunocytochemistry" Authors: Cheng CS,Tan HY,Wang N,Chen L,Meng Z,Chen Z,Feng Y	Year 2021 Species Mouse Dilution 1:200
--	--

Immunocytochemistry (2)

Clinical and translational medicine Functional inhibition of lactate dehydrogenase suppresses pancreatic adenocarcinoma progression. "Published figure using CD3 monoclonal antibody (Product # 17-0032-82) in Immunocytochemistry" Authors: Cheng CS,Tan HY,Wang N,Chen L,Meng Z,Chen Z,Feng Y	Year 2021 Species Mouse Dilution 1:200
--	--

[More applications with references on thermofisher.com](#)

Flow (112)

For Research Use Only. Not for use in diagnostic procedures. Not for resale without express authorization. Products are warranted to operate or perform substantially in conformance with published Product specifications in effect at the time of sale, as set forth in the Production documentation, specifications and/or accompanying package inserts ("Documentation"). No claim of suitability for use in applications regulated by FDA is made. The warranty provided herein is valid only when used by properly trained individuals. Unless otherwise stated in the Documentation, this warranty is limited to one year from date of shipment when the Product is subjected to normal, proper and intended usage. This warranty does not extend to anyone other than the Buyer. Any model or sample furnished to Buyer is merely illustrative of the general type and quality of goods and does not represent that any Product will conform to such model or sample. NO OTHER WARRANTIES, EXPRESS OR IMPLIED, ARE GRANTED INCLUDING WITHOUT LIMITATION, IMPLIED WARRANTIES OF MERCHANTABILITY, FITNESS FOR ANY PARTICULAR PURPOSE, OR NON INFRINGEMENT. BUYER'S EXCLUSIVE REMEDY FOR NON-CONFORMING PRODUCTS DURING THE WARRANTY PERIOD IS LIMITED TO REPAIR, REPLACEMENT OF OR REFUND FOR THE NON-CONFORMING PRODUCT(S) AT SELLER'S SOLE OPTION. THERE IS NO OBLIGATION TO REPAIR, REPLACE OR REFUND FOR PRODUCTS AS THE RESULT OF (i) ACCIDENT, DISASTER OR EVENT OF FORCE MAJEURE, (ii) MISUSE, FAULT OR NEGLIGENCE OF OR BY BUYER, (iii) USE OF THE PRODUCTS IN A MANNER FOR WHICH THEY WERE NOT DESIGNED, OR (iv) IMPROPER STORAGE AND HANDLING OF THE PRODUCTS. Unless otherwise expressly stated on the Product or in the documentation accompanying the Product, the Product is intended for research only and is not to be used for any other purpose, including without limitation, unauthorized commercial uses, in vitro diagnostic uses, ex vivo or in vivo therapeutic uses, or any type of consumption by or application to human or animals.