

CD8a Monoclonal Antibody (RPA-T8), APC, eBioscience™

Product Details	
Size	100 Tests
Species Reactivity	Human
Published Species	Cynomolgus monkey, Rat, Human, Mouse, Rhesus monkey
Host/Isotype	Mouse / IgG1, kappa
Recommended Isotype Control	Mouse IgG1 kappa Isotype Control (P3.6.2.8.1), APC, eBioscience™
Class	Monoclonal
Type	Antibody
Clone	RPA-T8
Conjugate	APC
Excitation/Emission Max	651/660 nm
Form	Liquid
Concentration	5 µL/Test
Purification	Affinity chromatography
Storage buffer	PBS, pH 7.2, with 0.2% BSA
Contains	0.09% sodium azide
Storage conditions	4° C, store in dark, DO NOT FREEZE!
RRID	AB_10669564

Applications	Tested Dilution	Publications
Immunohistochemistry (IHC)	-	1 Publication
Flow Cytometry (Flow)	5 µL (0.06 µg)/test	44 Publications

Product Specific Information

Description: The RPA-T8 monoclonal antibody reacts with the human CD8a molecule, an approximately 32-34 kDa cell surface receptor expressed either as a heterodimer with the CD8 beta chain (CD8 alpha/beta) or as a homodimer (CD8 alpha/alpha). A majority of thymocytes and a subpopulation of mature T cells and NK cells express CD8a. CD8 binds to MHC class I and through its association with protein tyrosine kinase p56lck plays a role in T-cell development and activation of mature T cells.

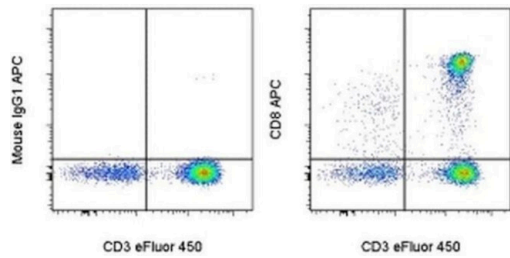
Applications Reported: The RPA-T8 antibody has been reported for use in flow cytometric analysis.

Applications Tested: This RPA-T8 antibody has been pre-titrated and tested by flow cytometric analysis of normal human peripheral blood cells. This can be used at 5 µL (0.06 µg) per test. A test is defined as the amount (µg) of antibody that will stain a cell sample in a final volume of 100 µL. Cell number should be determined empirically but can range from 10^5 to 10^8 cells/test.

Excitation: 633-647 nm; Emission: 660 nm; Laser: Red Laser.

Filtration: 0.2 µm post-manufacturing filtered.

Product Images For CD8a Monoclonal Antibody (RPA-T8), APC, eBioscience™



CD8a Antibody (17-0088-42) in Flow

Staining of normal human peripheral blood cells with Anti-Human CD3 eFluor® 450 (Product # 48-0037-42) and Mouse IgG1 K Isotype Control APC (Product # 17-4714-81) (left) or Anti-Human CD8a APC (right). Cells in the lymphocyte gate were used for analysis.

[View more figures on thermofisher.com](#)

45 References

Immunohistochemistry (1)

Open life sciences	Year 2022
Changes of immune cells in patients with hepatocellular carcinoma treated by radiofrequency ablation and hepatectomy, a pilot study.	
"Published figure using CD8a monoclonal antibody (Product # 17-0088-42) in Immunohistochemistry"	
Authors: Yu Z,Li G,Yu H,Asakawa T	

Flow Cytometry (44)

Nature communications	Year 2022
PRDM1/BLIMP1 induces cancer immune evasion by modulating the USP22-SPI1-PD-L1 axis in hepatocellular carcinoma cells.	
"17-0088-42 was used in Flow cytometry/Cell sorting to demonstrate that the PRDM1-USP22-SPI1 axis regulates PD-L1 levels, resulting in infiltrated CD8+ T cell exhaustion."	Species Human Mouse
Authors: Li Q,Zhang L,You W,Xu J,Dai J,Hua D,Zhang R,Yao F,Zhou S,Huang W,Dai Y,Zhang Y,Baheti T,Qian X,Pu L,Xu J,Xia Y,Zhang C,Tang J,Wang X	Dilution 1:200 1:200

Heliyon	Year 2022
Immunometabolic analysis shows a distinct cyto-metabotype in Covid-19 compared to sepsis from other causes.	
"17-0088-42 was used in Flow cytometry/Cell sorting to support the hypothesis that IFN- -PD-L1 axis might be involved in the cytokine release syndrome typical of severe Covid-19 and the phenomenon persisted through multiple pandemic waves despite use of immunomodulation."	Species Human
Authors: Trovato FM,Mujib S,Jerome E,Cavazza A,Morgan P,Smith J,Depante MT,O'Reilly K,Luxton J,Mare T,Napoli S,McPhail MJ	

[View more Flow references on thermofisher.com](#)

More applications with references on thermofisher.com

For Research Use Only. Not for use in diagnostic procedures. Not for resale without express authorization. Products are warranted to operate or perform substantially in conformance with published Product specifications in effect at the time of sale, as set forth in the Production documentation, specifications and/or accompanying package inserts ("Documentation"). No claim of suitability for use in applications regulated by FDA is made. The warranty provided herein is valid only when used by properly trained individuals. Unless otherwise stated in the Documentation, this warranty is limited to one year from date of shipment when the Product is subjected to normal, proper and intended usage. This warranty does not extend to anyone other than the Buyer. Any model or sample furnished to Buyer is merely illustrative of the general type and quality of goods and does not represent that any Product will conform to such model or sample. NO OTHER WARRANTIES, EXPRESS OR IMPLIED, ARE GRANTED INCLUDING WITHOUT LIMITATION, IMPLIED WARRANTIES OF MERCHANTABILITY, FITNESS FOR ANY PARTICULAR PURPOSE, OR NON INFRINGEMENT. BUYER'S EXCLUSIVE REMEDY FOR NON-CONFORMING PRODUCTS DURING THE WARRANTY PERIOD IS LIMITED TO REPAIR, REPLACEMENT OF OR REFUND FOR THE NON-CONFORMING PRODUCT(S) AT SELLER'S SOLE OPTION. THERE IS NO OBLIGATION TO REPAIR, REPLACE OR REFUND FOR PRODUCTS AS THE RESULT OF (I) ACCIDENT, DISASTER OR EVENT OF FORCE MAJEURE, (II) MISUSE, FAULT OR NEGLIGENCE OF OR BY BUYER, (III) USE OF THE PRODUCTS IN A MANNER FOR WHICH THEY WERE NOT DESIGNED, OR (IV) IMPROPER STORAGE AND HANDLING OF THE PRODUCTS. Unless otherwise expressly stated on the Product or in the documentation accompanying the Product, the Product is intended for research only and is not to be used for any other purpose, including without limitation, unauthorized commercial uses, in vitro diagnostic uses, ex vivo or in vivo therapeutic uses, or any type of consumption by or application to human or animals.