

CD35 Monoclonal Antibody (E11), APC, eBioscience™

Product Details	
Size	100 Tests
Species Reactivity	Human, Non-human primate
Published Species	Human
Host/Isotype	Mouse / IgG1, kappa
Recommended Isotype Control	Mouse IgG1 kappa Isotype Control (P3.6.2.8.1), APC, eBioscience™
Class	Monoclonal
Type	Antibody
Clone	E11
Conjugate	APC
Excitation/Emission Max	651/660 nm
Form	Liquid
Concentration	5 µL/Test
Purification	Affinity chromatography
Storage buffer	PBS, pH 7.2, with 0.2% BSA
Contains	0.09% sodium azide
Storage conditions	4° C, store in dark, DO NOT FREEZE!
RRID	AB_10853499

Applications	Tested Dilution	Publications
Flow Cytometry (Flow)	5 µL (0.06 µg)/test	1 Publication

Product Specific Information

Description: This E11 monoclonal antibody reacts with human and non-human primate CD35, which is also known as complement receptor 1 (CR1). CD35 is expressed on B cells, T cell subsets, follicular dendritic cells, macrophages, neutrophils, eosinophils, and erythrocytes. This cell surface protein is also present on non-immune cells such as glomerular podocytes and Langerhans cells. CD35 binds the complement components C3b and C4b, which are derived from cleavage of C3 and C4, respectively, in the classical and alternative complement pathways. In humans, CD35 has been implicated in a variety of roles, including complement activation, transporting C3 complexes on erythrocytes, phagocytosis of complement-bound neutrophils and macrophages, B cell proliferation, and opsonization. Reports also indicate that Plasmodium falciparum, the pathogen that causes malaria, invades host erythrocytes by binding CD35. Decreased expression of CD35 on erythrocytes has been associated with systemic lupus erythematosus (SLE), type I diabetes, and rheumatoid arthritis.

The E11 antibody has been reported to crossreact to capuchin monkey, chimpanzee, cynomolgus monkey, olive baboon, and rhesus macaque.

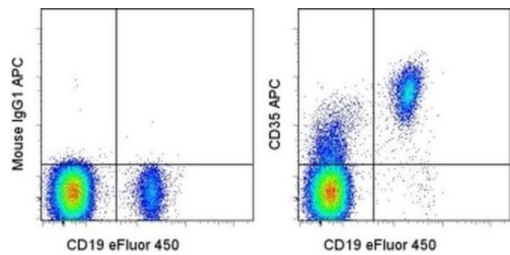
Applications Reported: This E11 antibody has been reported for use in flow cytometric analysis.

Applications Tested: This E11 antibody has been pre-titrated and tested by flow cytometric analysis of normal human peripheral blood cells. This can be used at 5 µL (0.06 µg) per test. A test is defined as the amount (µg) of antibody that will stain a cell sample in a final volume of 100 µL. Cell number should be determined empirically but can range from 10⁵ to 10⁸ cells/test.

Excitation: 633-647 nm; **Emission:** 660 nm; **Laser:** Red Laser.

Filtration: 0.2 µm post-manufacturing filtered.

Product Images For CD35 Monoclonal Antibody (E11), APC, eBioscience™



CD35 Antibody (17-0359-42) in Flow
Staining of normal human peripheral blood cells with Anti-Human CD19 eFluor® 450 (Product # 48-0199-42) and Mouse IgG1 K Isotype Control APC (Product # 17-4714-81) (left) or Anti-Human/Non-Human Primate CD35 APC (right). Cells in the lymphocyte gate were used for analysis.

1 Reference

Flow Cytometry (1)

Cell reports. Medicine	Year 2022
A group B <i>Streptococcus</i> alpha-like protein subunit vaccine induces functionally active antibodies in humans targeting homotypic and heterotypic strains.	Species Human
"17-0359-42 was used in Flow Cytometry to demonstrate robust IgG and IgA responses in relation to vaccine homotypic and heterotypic group B <i>Streptococcus</i> strains, which go on to prevent bacterial invasion of epithelial cells in neonates."	
Authors: Pawlowski A,Lannergård J,Gonzalez-Miro M,Cao D,Larsson S,Persson JJ,Kitson G,Darsley M,Rom AL,Hedegaard M,Fischer PB,Johansson-Lindbom B	

For Research Use Only. Not for use in diagnostic procedures. Not for resale without express authorization. Products are warranted to operate or perform substantially in conformance with published Product specifications in effect at the time of sale, as set forth in the Production documentation, specifications and/or accompanying package inserts ("Documentation"). No claim of suitability for use in applications regulated by FDA is made. The warranty provided herein is valid only when used by properly trained individuals. Unless otherwise stated in the Documentation, this warranty is limited to one year from date of shipment when the Product is subjected to normal, proper and intended usage. This warranty does not extend to anyone other than the Buyer. Any model or sample furnished to Buyer is merely illustrative of the general type and quality of goods and does not represent that any Product will conform to such model or sample. NO OTHER WARRANTIES, EXPRESS OR IMPLIED, ARE GRANTED INCLUDING WITHOUT LIMITATION, IMPLIED WARRANTIES OF MERCHANTABILITY, FITNESS FOR ANY PARTICULAR PURPOSE, OR NON INFRINGEMENT. BUYER'S EXCLUSIVE REMEDY FOR NON-CONFORMING PRODUCTS DURING THE WARRANTY PERIOD IS LIMITED TO REPAIR, REPLACEMENT OF OR REFUND FOR THE NON-CONFORMING PRODUCT(S) AT SELLER'S SOLE OPTION. THERE IS NO OBLIGATION TO REPAIR, REPLACE OR REFUND FOR PRODUCTS AS THE RESULT OF (i) ACCIDENT, DISASTER OR EVENT OF FORCE MAJEURE, (ii) MISUSE, FAULT OR NEGLIGENCE OF OR BY BUYER, (iii) USE OF THE PRODUCTS IN A MANNER FOR WHICH THEY WERE NOT DESIGNED, OR (iv) IMPROPER STORAGE AND HANDLING OF THE PRODUCTS. Unless otherwise expressly stated on the Product or in the documentation accompanying the Product, the Product is intended for research only and is not to be used for any other purpose, including without limitation, unauthorized commercial uses, in vitro diagnostic uses, ex vivo or in vivo therapeutic uses, or any type of consumption by or application to human or animals.