

CD49f (Integrin alpha 6) Monoclonal Antibody (eBioGoH3 (GoH3)), APC, eBioscience™

Product Details	
Size	100 µg
Species Reactivity	Human, Mouse
Published Species	Mouse, Human
Host/Isotype	Rat / IgG2a, kappa
Recommended Isotype Control	Rat IgG2a kappa Isotype Control (eBR2a), APC, eBioscience™
Class	Monoclonal
Type	Antibody
Clone	eBioGoH3 (GoH3)
Conjugate	APC
Excitation/Emission Max	651/660 nm
Form	Liquid
Concentration	0.2 mg/mL
Purification	Affinity chromatography
Storage buffer	PBS, pH 7.2
Contains	0.09% sodium azide
Storage conditions	4° C, store in dark, DO NOT FREEZE!
RRID	AB_2016694

Applications	Tested Dilution	Publications
Flow Cytometry (Flow)	0.125 µg/test	52 Publications

Product Specific Information

Description: The eBioGoH3 monoclonal antibody reacts with mouse and human CD49f, also known as integrin alpha 6, very late activation antigen 6 (VLA-6 alpha chain), and platelet gplc. CD49f is a 120 kD transmembrane protein. CD49f associates with CD29, the integrin beta 1 chain, to form the VLA-6 complex; CD49f also associates with CD104, the integrin beta 4 chain, to form the alpha 6 beta 4 complex. CD49f is expressed primarily on T cells, monocytes, platelets, epithelial and endothelial cells. CD49f expression has also been found on germinal center B cells. The eBioGoH3 antibody is cross-reactive to integrin alpha 6 on human, mouse and bovine cells. This antibody has also been reported to have functional activity in blocking the binding of integrin alpha 6 to laminin.

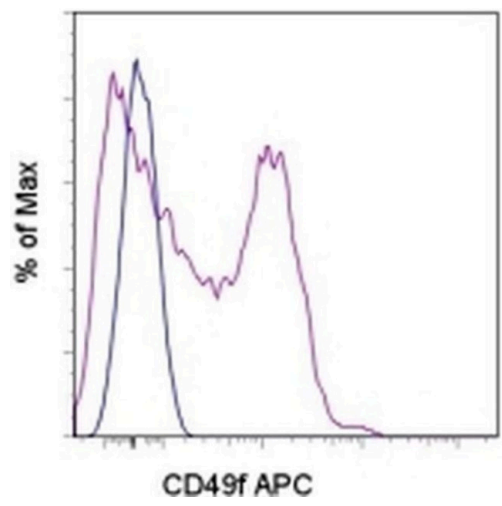
Applications Reported: This eBioGoH3 (GoH3) antibody has been reported for use in flow cytometric analysis.

Applications Tested: This eBioGoH3 (GoH3) antibody has been tested by flow cytometric analysis of normal human peripheral blood cells. This can be used at less than or equal to 0.125 µg per test. A test is defined as the amount (µg) of antibody that will stain a cell sample in a final volume of 100 µL. Cell number should be determined empirically but can range from 10⁵ to 10⁸ cells/test. It is recommended that the antibody be carefully titrated for optimal performance in the assay of interest.

Excitation: 633-647 nm; **Emission:** 660 nm; **Laser:** Red Laser.

Filtration: 0.2 µm post-manufacturing filtered.

Product Images For CD49f (Integrin alpha 6) Monoclonal Antibody (eBioGoH3 (GoH3)), APC, eBioscience™



CD49f (Integrin alpha 6) Antibody (17-0495-82) in Flow
Staining of normal human peripheral blood cells with 0.06 µg of Rat IgG2a K Isotype Control APC (Product # 17-4321-81) (blue histogram) or 0.06 µg of Anti-Human/Mouse CD49f (Integrin alpha 6) APC (purple histogram). Cells in the lymphocyte gate were used for analysis.

[View more figures on thermofisher.com](#)

52 References

Flow Cytometry (52)

<p>Scientific reports</p> <p>Tumor suppressor DEAR1 regulates mammary epithelial cell fate and predicts early onset and metastasis in triple negative breast cancer.</p> <p>"Published figure using CD49f (Integrin alpha 6) monoclonal antibody (Product # 17-0495-82) in Flow Cytometry"</p> <p>Authors: Le UQ,Chen N,Balasenthil S,Lurie E,Yang F,Liu S,Rubin L,Solis Soto LM,Raso MG,Batra H,Sahin AA,Wistuba II,Killary AM</p>	<p>Year 2022</p>
<p>Molecular nutrition & food research</p> <p>The Effect of Infant Gastric Digestion on Human Maternal Milk Cells.</p> <p>"Published figure using CD49f (Integrin alpha 6) monoclonal antibody (Product # 17-0495-82) in Flow Cytometry"</p> <p>Authors: Doerfler R,Melamed JR,Whitehead KA</p>	<p>Year 2022</p>

[View more Flow references on thermofisher.com](#)

More applications with references on thermofisher.com

For Research Use Only. Not for use in diagnostic procedures. Not for resale without express authorization. Products are warranted to operate or perform substantially in conformance with published Product specifications in effect at the time of sale, as set forth in the Production documentation, specifications and/or accompanying package inserts ("Documentation"). No claim of suitability for use in applications regulated by FDA is made. The warranty provided herein is valid only when used by properly trained individuals. Unless otherwise stated in the Documentation, this warranty is limited to one year from date of shipment when the Product is subjected to normal, proper and intended usage. This warranty does not extend to anyone other than the Buyer. Any model or sample furnished to Buyer is merely illustrative of the general type and quality of goods and does not represent that any Product will conform to such model or sample. NO OTHER WARRANTIES, EXPRESS OR IMPLIED, ARE GRANTED INCLUDING WITHOUT LIMITATION, IMPLIED WARRANTIES OF MERCHANTABILITY, FITNESS FOR ANY PARTICULAR PURPOSE, OR NON-INFRINGEMENT. BUYER'S EXCLUSIVE REMEDY FOR NON-CONFORMING PRODUCTS DURING THE WARRANTY PERIOD IS LIMITED TO REPAIR, REPLACEMENT OF OR REFUND FOR THE NON-CONFORMING PRODUCT(S) AT SELLER'S SOLE OPTION. THERE IS NO OBLIGATION TO REPAIR, REPLACE OR REFUND FOR PRODUCTS AS THE RESULT OF (I) ACCIDENT, DISASTER OR EVENT OF FORCE MAJEURE, (II) MISUSE, FAULT OR NEGLIGENCE OF OR BY BUYER, (III) USE OF THE PRODUCTS IN A MANNER FOR WHICH THEY WERE NOT DESIGNED, OR (IV) IMPROPER STORAGE AND HANDLING OF THE PRODUCTS. Unless otherwise expressly stated on the Product or in the documentation accompanying the Product, the Product is intended for research only and is not to be used for any other purpose, including without limitation, unauthorized commercial uses, in vitro diagnostic uses, ex vivo or in vivo therapeutic uses, or any type of consumption by or application to human or animals.