

# CD105 (Endoglin) Monoclonal Antibody (MJ7/18), APC, eBioscience™

Product Details	
Size	100 µg
Species Reactivity	Mouse
Published Species	Mouse
Host/Isotope	Rat / IgG2a, kappa
Recommended Isotype Control	Rat IgG2a kappa Isotype Control (eBR2a), APC, eBioscience™
Class	Monoclonal
Type	Antibody
Clone	MJ7/18
Conjugate	APC
Form	Liquid
Concentration	0.2 mg/mL
Purification	Affinity chromatography
Storage buffer	PBS, pH 7.2, with 0.1% gelatin
Contains	0.09% sodium azide
Storage Conditions	4° C, store in dark, DO NOT FREEZE!
RRID	AB_2573155

Applications	Tested	Dilution	Published
Flow Cytometry (Flow)	✓	0.125 µg/test	9 Publications
Miscellaneous PubMed (MISC)	-		1 Publication
Immunohistochemistry (Frozen) (IHC (F))	-		2 Publications

## Product Specific Information

Description: The MJ7/18 monoclonal antibody reacts with the mouse CD105 molecule, also known as Endoglin. This 90 kDa disulfide-linked homodimer is expressed by vascular endothelial cells. It is suggested that CD105 functions in adhesion and embryonic angiogenesis.

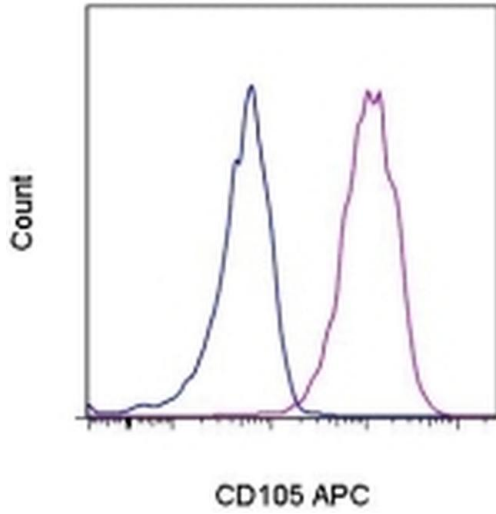
Applications Reported: This MJ7/18 antibody has been reported for use in flow cytometric analysis.

Applications Tested: This MJ7/18 antibody has been tested by flow cytometric analysis of bEnd.3 cells. This can be used at less than or equal to 0.125 µg per test. A test is defined as the amount (µg) of antibody that will stain a cell sample in a final volume of 100 µL. Cell number should be determined empirically but can range from 10<sup>5</sup> to 10<sup>8</sup> cells/test. It is recommended that the antibody be carefully titrated for optimal performance in the assay of interest.

Excitation: 633-647 nm; Emission: 660 nm; Laser: Red Laser.

Filtration: 0.2 µm post-manufacturing filtered.

### Product Images For CD105 (Endoglin) Monoclonal Antibody (MJ7/18), APC, eBioscience™



#### CD105 (Endoglin) Antibody (17-1051-82) in Flow

Staining of bEnd-3 cells with 0.06 µg of Rat IgG2a K Isotype Control APC (Product # 17-4321-81) (blue histogram) or 0.06 µg of Anti-Mouse CD105 (Endoglin) APC (purple histogram). Total viable cells were used for analysis.

[View more figures on thermofisher.com](https://www.thermofisher.com)

## 12 References

### Flow Cytometry (9)

#### Stem cell reports

#### Cardiosphere-Derived Cells Require Endoglin for Paracrine-Mediated Angiogenesis.

"Published figure using CD105 (Endoglin) monoclonal antibody (Product # 17-1051-82) in Flow Cytometry"

Authors: Redgrave RE,Tual-Chalot S,Davison BJ,Singh E,Hall D,Amirrasouli MM,Gilchrist D,Medvinsky A,Arthur HM

**Species**  
Not Applicable

**Dilution**  
Not Cited

**Year**  
2017

#### Cell research

#### Identification of blood vascular endothelial stem cells by the expression of protein C receptor.

"17-1051 was used in Flow cytometry/Cell sorting to investigate the existence and identity of vascular endothelial stem cells, showing that these cells express the protein C receptor."

Authors: Yu QC,Song W,Wang D,Zeng YA

**Species**  
Mouse

**Dilution**  
1:200

**Year**  
2016

[View more Flow references on thermofisher.com](#)

### Miscellaneous PubMed (1)

#### Scientific reports

#### Alleviation of skin inflammation after Lin(-) cell transplantation correlates with their differentiation into myeloid-derived suppressor cells.

"17-1051 was used in Magnetic cell separation to study the migration, expansion and differentiation of hematopoietic stem cells in response to inflammation following HSC transplantation."

Authors: Jeong Ryu S,Ju JM,Kim W,Bum Kim M,Hee Oh K,Sup Lee D,Lee H,Eun Oh J,Soo Park K,Young Choi E

**Species**  
Mouse

**Dilution**  
Not Cited

**Year**  
2015

### Immunohistochemistry (Frozen) (2)

#### Clinical cancer research : an official journal of the American Association for Cancer Research

#### Monitoring response to anticancer therapy by targeting microbubbles to tumor vasculature.

Authors: Korpanty G,Carbon JG,Grayburn PA,Fleming JB,Brekken RA

**Species**  
Not Applicable

**Dilution**  
Not Cited

**Year**  
2007

### More applications with references on thermofisher.com

For Research Use Only. Not for use in diagnostic procedures. Not for resale without express authorization. Products are warranted to operate or perform substantially in conformance with published Product specifications in effect at the time of sale, as set forth in the Production documentation, specifications and/or accompanying package inserts ("Documentation"). No claim of suitability for use in applications regulated by FDA is made. The warranty provided herein is valid only when used by properly trained individuals. Unless otherwise stated in the Documentation, this warranty is limited to one year from date of shipment when the Product is subjected to normal, proper and intended usage. This warranty does not extend to anyone other than the Buyer. Any model or sample furnished to Buyer is merely illustrative of the general type and quality of goods and does not represent that any Product will conform to such model or sample. NO OTHER WARRANTIES, EXPRESS OR IMPLIED, ARE GRANTED INCLUDING WITHOUT LIMITATION, IMPLIED WARRANTIES OF MERCHANTABILITY, FITNESS FOR ANY PARTICULAR PURPOSE, OR NON INFRINGEMENT. BUYER'S EXCLUSIVE REMEDY FOR NON-CONFORMING PRODUCTS DURING THE WARRANTY PERIOD IS LIMITED TO REPAIR, REPLACEMENT OF OR REFUND FOR THE NON-CONFORMING PRODUCT(S) AT SELLER'S SOLE OPTION. THERE IS NO OBLIGATION TO REPAIR, REPLACE OR REFUND FOR PRODUCTS AS THE RESULT OF (I) ACCIDENT, DISASTER OR EVENT OF FORCE MAJEURE, (II) MISUSE, FAULT OR NEGLIGENCE OF OR BY BUYER, (III) USE OF THE PRODUCTS IN A MANNER FOR WHICH THEY WERE NOT DESIGNED, OR (IV) IMPROPER STORAGE AND HANDLING OF THE PRODUCTS. Unless otherwise expressly stated on the Product or in the documentation accompanying the Product, the Product is intended for research only and is not to be used for any other purpose, including without limitation, unauthorized commercial uses, in vitro diagnostic uses, ex vivo or in vivo therapeutic uses, or any type of consumption by or application to human or animals.