

Axl Monoclonal Antibody (MAXL8DS), APC, eBioscience™

Product Details	
Size	100 µg
Species Reactivity	Mouse
Host/Isotype	Rat / IgG2a, kappa
Recommended Isotype Control	Rat IgG2a kappa Isotype Control (eBR2a), APC, eBioscience™
Class	Monoclonal
Type	Antibody
Clone	MAXL8DS
Conjugate	APC
Immunogen	C57BL/6 mouse Axl-human IgG Fc fusion protein
Form	Liquid
Concentration	0.2 mg/mL
Purification	Affinity chromatography
Storage buffer	PBS, pH 7.2, with 0.1% gelatin
Contains	0.09% sodium azide
Storage conditions	4° C, store in dark, DO NOT FREEZE!
RRID	AB_2734848

Applications	Tested Dilution	Publications
Flow Cytometry (Flow)	0.125 µg/test	-

Product Specific Information

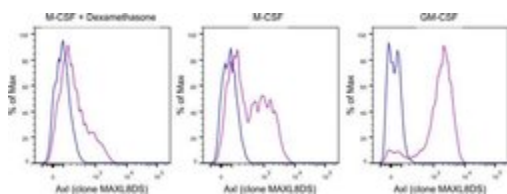
Description: This MAXL8DS monoclonal antibody recognizes mouse Axl, a member of the TAM family of tyrosine kinase receptors that also includes MerTK and Tyro3. Within hematopoietic compartment the highest expression of Axl can be observed on dendritic cells and macrophages. Stimulation with TLR ligands has been shown to additionally upregulate this expression. This MAXL8DS antibody will work in flow cytometry on both native and fixed/permeabilized cells.

Applications Reported: This MAXL8DS antibody has been reported for use in flow cytometric analysis.

Applications Tested: This MAXL8DS antibody has been tested by flow cytometric analysis of mouse bone marrow cells. This may be used at less than or equal to 0.125 µg per test. A test is defined as the amount (µg) of antibody that will stain a cell sample in a final volume of 100 µL. Cell number should be determined empirically but can range from 10⁵ to 10⁸ cells/test. It is recommended that the antibody be carefully titrated for optimal performance in the assay of interest.

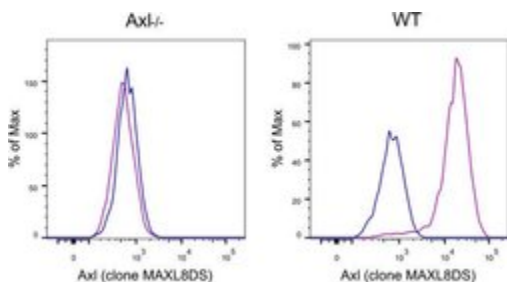
Excitation: 633-647 nm; **Emission:** 660 nm; **Laser:** Red Laser

Advanced Verification Data



Axl Antibody (17-1084-82)

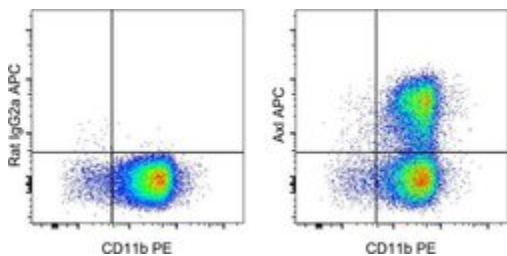
Staining of mouse bone marrow cells cultured for 7 days in the presence of either M-CSF and dexamethasone, M-CSF alone, or GM-CSF. As expected, dexamethasone decreases the expression of Axl, whereas GM-CSF induces more Axl than M-CSF. Details: C57BL/6 bone marrow was cultured for 7 days with the indicated factors, Fc blocked, and stained with CD11b (clone M1/70), and Rat IgG2a Isotype control (blue histogram) or Axl (clone MAXL8DS) (purple histogram). Viable cells expressing CD11b were used for analysis. Cell treatment validation info.



Axl Antibody (17-1084-82)

Staining of mouse splenocytes cultured for 7 days in the presence of GM-CSF. As expected, Axl Monoclonal Antibody stains dendritic cells from WT mouse but not from Axl-/- mouse. Details: splenocytes from Axl-/- mouse (left panel) or WT mouse (right panel) were cultured for 7 days in the presence of GM-CSF. The cells were then Fc blocked, stained with CD11c (clone N418), and stained with Rat IgG2a Isotype control (blue histograms) or Axl (clone MAXL8DS) (purple histograms). Viable cells expressing CD11c were used for analysis. Knockout validation info.

Product Images For Axl Monoclonal Antibody (MAXL8DS), APC, eBioscience™



Axl Antibody (17-1084-82) in Flow

Mouse bone marrow cells were cultured in the presence of GM-CSF for 7 days, Fc blocked with CD16/CD32 Antibody (Product # 14-0161-82) and normal mouse serum, and subsequently stained with CD11b Monoclonal Antibody, PE (Product # 12-0112-82) and 0.06 µg of Rat IgG2a kappa Isotype Control, APC (Product # 17-4321-82) (left) or 0.06 µg of Axl Monoclonal Antibody, APC (right). Total viable cells were used for analysis, as determined by Fixable Viability Dye eFluor 450 (Product # 65-0863-18).

For Research Use Only. Not for use in diagnostic procedures. Not for resale without express authorization. Products are warranted to operate or perform substantially in conformance with published Product specifications in effect at the time of sale, as set forth in the Production documentation, specifications and/or accompanying package inserts ("Documentation"). No claim of suitability for use in applications regulated by FDA is made. The warranty provided herein is valid only when used by properly trained individuals. Unless otherwise stated in the Documentation, this warranty is limited to one year from date of shipment when the Product is subjected to normal, proper and intended usage. This warranty does not extend to anyone other than the Buyer. Any model or sample furnished to Buyer is merely illustrative of the general type and quality of goods and does not represent that any Product will conform to such model or sample. NO OTHER WARRANTIES, EXPRESS OR IMPLIED, ARE GRANTED INCLUDING WITHOUT LIMITATION, IMPLIED WARRANTIES OF MERCHANTABILITY, FITNESS FOR ANY PARTICULAR PURPOSE, OR NON INFRINGEMENT. BUYER'S EXCLUSIVE REMEDY FOR NON-CONFORMING PRODUCTS DURING THE WARRANTY PERIOD IS LIMITED TO REPAIR, REPLACEMENT OF OR REFUND FOR THE NON-CONFORMING PRODUCT(S) AT SELLER'S SOLE OPTION. THERE IS NO OBLIGATION TO REPAIR, REPLACE OR REFUND FOR PRODUCTS AS THE RESULT OF (I) ACCIDENT, DISASTER OR EVENT OF FORCE MAJEURE, (II) MISUSE, FAULT OR NEGLIGENCE OF OR BY BUYER, (III) USE OF THE PRODUCTS IN A MANNER FOR WHICH THEY WERE NOT DESIGNED, OR (IV) IMPROPER STORAGE AND HANDLING OF THE PRODUCTS. Unless otherwise expressly stated on the Product or in the documentation accompanying the Product, the Product is intended for research only and is not to be used for any other purpose, including without limitation, unauthorized commercial uses, in vitro diagnostic uses, ex vivo or in vivo therapeutic uses, or any type of consumption by or application to human or animals.