

CD206 (MMR) Monoclonal Antibody (19.2), APC, eBioscience™

Product Details	
Size	100 Tests
Species Reactivity	Human
Published Species	Human, Mouse
Host/Isotype	Mouse / IgG1, kappa
Recommended Isotype Control	Mouse IgG1 kappa Isotype Control (P3.6.2.8.1), APC, eBioscience™
Class	Monoclonal
Type	Antibody
Clone	19.2
Conjugate	APC
Form	Liquid
Concentration	5 µL/Test
Purification	Affinity chromatography
Storage buffer	PBS, pH 7.2, with 0.1% gelatin, 0.2% BSA
Contains	0.09% sodium azide
Storage conditions	4° C, store in dark, DO NOT FREEZE!
RRID	AB_2573182

Applications	Tested Dilution	Publications
Flow Cytometry (Flow)	5 µL (0.06 µg)/test	10 Publications

Product Specific Information

Description: This 19.2 monoclonal antibody reacts with human CD206, which is also known as the macrophage mannose receptor (MMR). CD206 is expressed on macrophages and dendritic cells. This type I transmembrane protein can also be detected on non-immune cells, including hepatic and lymphatic epithelia and kidney mesengial cells. CD206 binds to glycoproteins that terminate in D-mannose, L-fucose, or N-acetylglucosamine, as well as a variety of hormones. This receptor undergoes constitutive internalization and recycling between the plasma membrane and the endosomal compartment. CD206 is involved in antigen processing and presentation, cell migration, and intracellular signaling. Moreover, CD206 plays a key role in phagocytosis pathogens such as *Candida albicans*, *Leishmania*, and *Mycobacterium tuberculosis*.

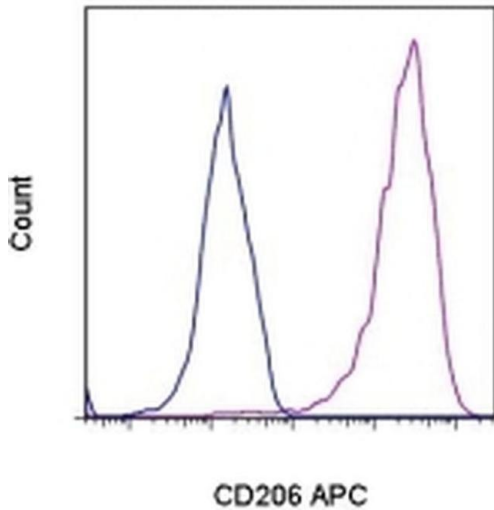
Applications Reported: This 19.2 antibody has been reported for use in flow cytometric analysis.

Applications Tested: This 19.2 antibody has been pre-titrated and tested by flow cytometric analysis of stimulated normal human peripheral blood monocytes. This can be used at 5 µL (0.06 µg) per test. A test is defined as the amount (µg) of antibody that will stain a cell sample in a final volume of 100 µL. Cell number should be determined empirically but can range from 10⁵ to 10⁸ cells /test.

Excitation: 633-647 nm; Emission: 660 nm; Laser: Red Laser.

Filtration: 0.2 µm post-manufacturing filtered.

Product Images For CD206 (MMR) Monoclonal Antibody (19.2), APC, eBioscience™



CD206 (MMR) Antibody (17-2069-42) in Flow

Normal human peripheral blood cells were cultured for 3 days with Human GM-CSF Recombinant Protein (Product # 14-8339-62). Cells were stained with Mouse IgG1 K Isotype Control APC (Product # 17-4714-81) (blue histogram) or Anti-Human CD206 (MMR) APC (purple histogram). Total viable monocytes/macrophages, as determined by Fixable Viability Dye eFluor® 450, were used for analysis.

[View more figures on thermofisher.com](#)

10 References

Flow Cytometry (10)

Frontiers in pharmacology

Ginsenoside Rg3 Mitigates Atherosclerosis Progression in Diabetic apoE^{-/-} Mice by Skewing Macrophages to the M2 Phenotype.

"17-2069 was used in Flow cytometry/Cell sorting to demonstrate an immunomodulatory role of ginsenoside 20(S)-Rg3 in promoting macrophages to a profile of the M2 type through PPAR-dependent mechanisms."

Authors: Guo M,Xiao J,Sheng X,Zhang X,Tie Y,Wang L,Zhao L, Ji X

Species
Human

Dilution
Not Cited

Year
2020

The Journal of clinical investigation

Annexin A1 drives macrophage skewing to accelerate muscle regeneration through AMPK activation.

"17-2069 was used in Flow cytometry/Cell sorting to explore the role of Annexin A1 in skeletal muscle injury regeneration."

Authors: McArthur S,Juban G,Gobbetti T,Desgeorges T,Theret M,Gondin J,Toller-Kawahisa JE,Reutelingsperger CP, Chazaud B,Perretti M,Mounier R

Species
Human
Not Applicable

Dilution
Not Cited
Not Cited

Year
2020

[View more Flow references on thermofisher.com](#)

More applications with references on thermofisher.com

For Research Use Only. Not for use in diagnostic procedures. Not for resale without express authorization. Products are warranted to operate or perform substantially in conformance with published Product specifications in effect at the time of sale, as set forth in the Production documentation, specifications and/or accompanying package inserts ("Documentation"). No claim of suitability for use in applications regulated by FDA is made. The warranty provided herein is valid only when used by properly trained individuals. Unless otherwise stated in the Documentation, this warranty is limited to one year from date of shipment when the Product is subjected to normal, proper and intended usage. This warranty does not extend to anyone other than the Buyer. Any model or sample furnished to Buyer is merely illustrative of the general type and quality of goods and does not represent that any Product will conform to such model or sample. NO OTHER WARRANTIES, EXPRESS OR IMPLIED, ARE GRANTED INCLUDING WITHOUT LIMITATION, IMPLIED WARRANTIES OF MERCHANTABILITY, FITNESS FOR ANY PARTICULAR PURPOSE, OR NON-INFRINGEMENT. BUYER'S EXCLUSIVE REMEDY FOR NON-CONFORMING PRODUCTS DURING THE WARRANTY PERIOD IS LIMITED TO REPAIR, REPLACEMENT OF OR REFUND FOR THE NON-CONFORMING PRODUCT(S) AT SELLER'S SOLE OPTION. THERE IS NO OBLIGATION TO REPAIR, REPLACE OR REFUND FOR PRODUCTS AS THE RESULT OF (I) ACCIDENT, DISASTER OR EVENT OF FORCE MAJEURE, (II) MISUSE, FAULT OR NEGLIGENCE OF OR BY BUYER, (III) USE OF THE PRODUCTS IN A MANNER FOR WHICH THEY WERE NOT DESIGNED, OR (IV) IMPROPER STORAGE AND HANDLING OF THE PRODUCTS. Unless otherwise expressly stated on the Product or in the documentation accompanying the Product, the Product is intended for research only and is not to be used for any other purpose, including without limitation, unauthorized commercial uses, in vitro diagnostic uses, ex vivo or in vivo therapeutic uses, or any type of consumption by or application to human or animals.