

CD335 (NKp46) Monoclonal Antibody (9E2), APC, eBioscience™

Product Details	
Size	100 Tests
Species Reactivity	Human
Published Species	Human
Host/Isotype	Mouse / IgG1, kappa
Recommended Isotype Control	Mouse IgG1 kappa Isotype Control (P3.6.2.8.1), APC, eBioscience™
Class	Monoclonal
Type	Antibody
Clone	9E2
Conjugate	APC
Excitation/Emission Max	651/660 nm
Form	Liquid
Concentration	5 µL/Test
Purification	Affinity chromatography
Storage buffer	PBS, pH 7.2, with 0.2% BSA
Contains	0.09% sodium azide
Storage conditions	4° C, store in dark, DO NOT FREEZE!
RRID	AB_2573200

Applications	Tested Dilution	Publications
Flow Cytometry (Flow)	5 µL (0.125 µg)/test	3 Publications

Product Specific Information

Description: This 9E2 monoclonal antibody reacts with human CD335, which is also known as NKp46. Expressed on NK cells, CD335 is a member of the natural cytotoxicity receptor family that also includes NKp30 and NKp44. This type I transmembrane glycoprotein is involved in activating and expanding resting NK cells following interaction with dendritic cells to eliminate tumor and virus-infected (e.g., influenza) cells. CD335 also interacts with pancreatic beta cells during the development of type I diabetes.

The 9E2 antibody has been reported to induce cytotoxicity.

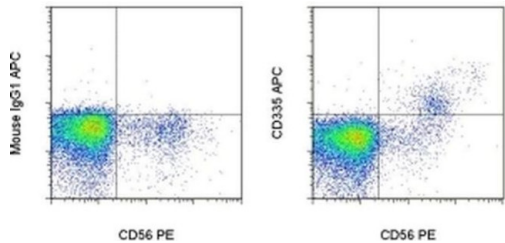
Applications Reported: This 9E2 antibody has been reported for use in flow cytometric analysis.

Applications Tested: This 9E2 antibody has been pre-titrated and tested by flow cytometric analysis of normal human peripheral blood cells. This can be used at 5 µL (0.125 µg) per test. A test is defined as the amount (µg) of antibody that will stain a cell sample in a final volume of 100 µL. Cell number should be determined empirically but can range from 10⁵ to 10⁸ cells/test.

Excitation: 633-647 nm; **Emission:** 660 nm; **Laser:** Red Laser.

Filtration: 0.2 µm post-manufacturing filtered.

Product Images For CD335 (NKp46) Monoclonal Antibody (9E2), APC, eBioscience™



CD335 (NKp46) Antibody (17-3359-42) in Flow
Staining of normal human peripheral blood cells with Anti-Human CD56 (NCAM) PE (Product # 12-0567-42) and Mouse IgG1 K Isotype Control APC (Product # 17-4714-81) (left) or Anti-Human CD335 (NKp46) APC (right). Cells in the lymphocyte gate were used for analysis.

3 References

Flow Cytometry (3)

<p>Genes & diseases</p> <p>The number and cytotoxicity and the expression of cytotoxicity-related molecules in peripheral natural killer (NK) cells do not predict the repeated implantation failure (RIF) for the <i>in vitro</i> fertilization patients.</p> <p>"17-3359-42 was used in Flow Cytometry to suggest that RIF is not associated with significant alterations in the number or function of peripheral blood NK cells."</p> <p>Authors: Zhang H,Huang C,Chen X,Li L,Liu S,Li Y,Zhang Y,Zeng Y,Hu L</p>	<p>Year 2020</p> <p>Species Human</p>
<p>BMC cancer</p> <p>Cytotoxic effects of ex vivo-expanded natural killer cell-enriched lymphocytes (MYJ1633) against liver cancer.</p> <p>"Published figure using CD335 (NKp46) monoclonal antibody (Product # 17-3359-42) in Flow Cytometry"</p> <p>Authors: Choi JW, Lee ES, Kim SY, Park SI, Oh S, Kang JH, Ryu HA, Lee S</p>	<p>Year 2019</p>

[View more Flow references on thermofisher.com](#)

For Research Use Only. Not for use in diagnostic procedures. Not for resale without express authorization. Products are warranted to operate or perform substantially in conformance with published Product specifications in effect at the time of sale, as set forth in the Production documentation, specifications and/or accompanying package inserts ("Documentation"). No claim of suitability for use in applications regulated by FDA is made. The warranty provided herein is valid only when used by properly trained individuals. Unless otherwise stated in the Documentation, this warranty is limited to one year from date of shipment when the Product is subjected to normal, proper and intended usage. This warranty does not extend to anyone other than the Buyer. Any model or sample furnished to Buyer is merely illustrative of the general type and quality of goods and does not represent that any Product will conform to such model or sample. NO OTHER WARRANTIES, EXPRESS OR IMPLIED, ARE GRANTED INCLUDING WITHOUT LIMITATION, IMPLIED WARRANTIES OF MERCHANTABILITY, FITNESS FOR ANY PARTICULAR PURPOSE, OR NON-INFRINGEMENT. BUYER'S EXCLUSIVE REMEDY FOR NON-CONFORMING PRODUCTS DURING THE WARRANTY PERIOD IS LIMITED TO REPAIR, REPLACEMENT OF OR REFUND FOR THE NON-CONFORMING PRODUCT(S) AT SELLER'S SOLE OPTION. THERE IS NO OBLIGATION TO REPAIR, REPLACE OR REFUND FOR PRODUCTS AS THE RESULT OF (I) ACCIDENT, DISASTER OR EVENT OF FORCE MAJEURE, (II) MISUSE, FAULT OR NEGLIGENCE OF OR BY BUYER, (III) USE OF THE PRODUCTS IN A MANNER FOR WHICH THEY WERE NOT DESIGNED, OR (IV) IMPROPER STORAGE AND HANDLING OF THE PRODUCTS. Unless otherwise expressly stated on the Product or in the documentation accompanying the Product, the Product is intended for research only and is not to be used for any other purpose, including without limitation, unauthorized commercial uses, in vitro diagnostic uses, ex vivo or in vivo therapeutic uses, or any type of consumption by or application to human or animals.