

CD185 (CXCR5) Monoclonal Antibody (MU5UBEE), APC, eBioscience™

Product Details	
Size	100 Tests
Species Reactivity	Human, Non-human primate, Rhesus monkey
Published Species	Human, Rhesus monkey
Host/Isotype	Mouse / IgG2b, kappa
Recommended Isotype Control	Mouse IgG2b kappa Isotype Control (eBMG2b), APC, eBioscience™
Class	Monoclonal
Type	Antibody
Clone	MU5UBEE
Conjugate	APC
Excitation/Emission Max	651/660 nm
Immunogen	N-terminal extracellular domain
Form	Liquid
Concentration	5 µL/Test
Purification	Affinity chromatography
Storage buffer	PBS, pH 7.2, with 0.2% BSA
Contains	0.09% sodium azide
Storage conditions	4° C, store in dark, DO NOT FREEZE!
RRID	AB_2573296

Applications	Tested Dilution	Publications
Flow Cytometry (Flow)	5 µL (0.125 µg)/test	10 Publications

Product Specific Information

Description: The MU5UBEE monoclonal antibody reacts with human and non-human primate CD185. CD185, which is also known as C-X-C chemokine receptor 5 (CXCR5) and Burkitt lymphoma receptor 1 (BLR1), is a seven transmembrane G protein-coupled receptor originally identified in Burkitt's lymphoma. In peripheral blood, CD185 is expressed on B cells, CD4+ T cells (but not Th1 or Th2 cells), as well as on a subpopulation of memory (CD45RO+) T cells. Circulating CD185+ T cells are in a resting state and migrate to the lymph nodes due to expression of CCR7 and CD62L. In tonsil, CD185 is expressed on nearly all CD4+ cells together with CD45RO and activation markers such as CD69 and ICOS. Tonsillar CD185+ cells have been shown to induce antibody production when co-cultured with B cells, thus supporting their role in providing help to B cells. Furthermore, this chemokine receptor plays a critical role in lymphocyte trafficking, in particular T cell migration into the B cell follicles of germinal centers in response to CXCL13, making CD185 an established marker of follicular helper T cells.

The MU5UBEE monoclonal antibody also crossreacts with Rhesus macaque.

Applications Reported: This MU5UBEE antibody has been reported for use in flow cytometric analysis.

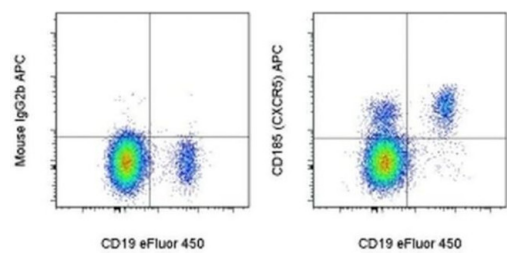
Applications Tested: This MU5UBEE antibody has been pre-titrated and tested by flow cytometric analysis of normal human peripheral blood cells. This can be used at 5 µL (0.125 µg) per test. A test is defined as the amount (µg) of antibody that will stain a cell sample in a final volume of 100 µL. Cell number should be determined empirically but can range from 10⁵ to 10⁸.

cells/test.

Excitation: 633-647 nm; Emission: 660 nm; Laser: Red Laser.

Filtration: 0.2 µm post-manufacturing filtered.

Product Images For CD185 (CXCR5) Monoclonal Antibody (MU5UBEE), APC, eBioscience™



CD185 (CXCR5) Antibody (17-9185-42) in Flow
Staining of normal human peripheral blood cells with Anti-Human CD19 eFluor® 450 (Product # 48-0199-42) and Mouse IgG2b K Isotype Control APC (Product # 17-4732-81) (left) or Anti-Human CD185 (CXCR5) APC (right). Cells in the lymphocyte gate were used for analysis.

View more figures on thermofisher.com

10 References

Flow Cytometry (10)

Frontiers in immunology	Year 2021
<i>In Situ</i> Characterization of Human Lymphoid Tissue Immune Cells by Multispectral Confocal Imaging and Quantitative Image Analysis; Implications for HIV Reservoir Characterization.	
"Published figure using CD185 (CXCR5) monoclonal antibody (Product # 17-9185-42) in Flow Cytometry"	
Authors: Moysi E,Del Rio Estrada PM,Torres-Ruiz F,Reyes-Terán G,Koup RA,Petrovas C	
iScience	Year 2021
NK-B cell cross talk induces CXCR5 expression on natural killer cells.	
"Published figure using CD185 (CXCR5) monoclonal antibody (Product # 17-9185-42) in Flow Cytometry"	
Authors: Rascle P,Jacquelin B,Petitdemange C,Contreras V,Planchais C,Lazzerini M,Dereuddre-Bosquet N,Le Grand R, Mouquet H,Huot N,Müller-Trutwin M	

View more Flow references on thermofisher.com

More applications with references on thermofisher.com

For Research Use Only. Not for use in diagnostic procedures. Not for resale without express authorization. Products are warranted to operate or perform substantially in conformance with published Product specifications in effect at the time of sale, as set forth in the Production documentation, specifications and/or accompanying package inserts ("Documentation"). No claim of suitability for use in applications regulated by FDA is made. The warranty provided herein is valid only when used by properly trained individuals. Unless otherwise stated in the Documentation, this warranty is limited to one year from date of shipment when the Product is subjected to normal, proper and intended usage. This warranty does not extend to anyone other than the Buyer. Any model or sample furnished to Buyer is merely illustrative of the general type and quality of goods and does not represent that any Product will conform to such model or sample. NO OTHER WARRANTIES, EXPRESS OR IMPLIED, ARE GRANTED INCLUDING WITHOUT LIMITATION, IMPLIED WARRANTIES OF MERCHANTABILITY, FITNESS FOR ANY PARTICULAR PURPOSE, OR NON-INFRINGEMENT. BUYER'S EXCLUSIVE REMEDY FOR NON-CONFORMING PRODUCTS DURING THE WARRANTY PERIOD IS LIMITED TO REPAIR, REPLACEMENT OF OR REFUND FOR THE NON-CONFORMING PRODUCT(S) AT SELLER'S SOLE OPTION. THERE IS NO OBLIGATION TO REPAIR, REPLACE OR REFUND FOR PRODUCTS AS THE RESULT OF (i) ACCIDENT, DISASTER OR EVENT OF FORCE MAJEURE, (ii) MISUSE, FAULT OR NEGLIGENCE OF OR BY BUYER, (iii) USE OF THE PRODUCTS IN A MANNER FOR WHICH THEY WERE NOT DESIGNED, OR (iv) IMPROPER STORAGE AND HANDLING OF THE PRODUCTS. Unless otherwise expressly stated on the Product or in the documentation accompanying the Product, the Product is intended for research only and is not to be used for any other purpose, including without limitation, unauthorized commercial uses, in vitro diagnostic uses, ex vivo or in vivo therapeutic uses, or any type of consumption by or application to human or animals.