

Phospho-PLCG2 (Tyr759) Monoclonal Antibody (4NPRN4), APC, eBioscience™

Product Details	
Size	100 Tests
Species Reactivity	Human, Mouse
Host/Isotype	Mouse / IgG1, kappa
Recommended Isotype Control	Mouse IgG1 kappa Isotype Control (P3.6.2.8.1), APC, eBioscience™
Class	Monoclonal
Type	Antibody
Clone	4NPRN4
Conjugate	APC
Excitation/Emission Max	651/660 nm
Form	Liquid
Concentration	5 µL/Test
Purification	Affinity chromatography
Storage buffer	PBS, pH 7.2, with 0.2% BSA
Contains	0.09% sodium azide
Storage conditions	4° C, store in dark, DO NOT FREEZE!
RRID	AB_2723467

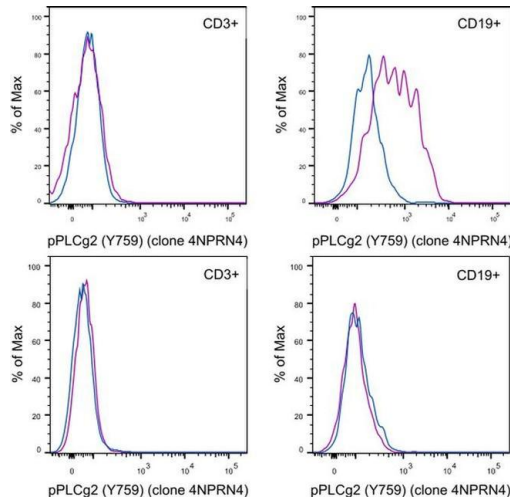
Applications	Tested Dilution	Publications
Flow Cytometry (Flow)	5 µL (0.06 µg)/test	-

Product Specific Information

Applications Reported: This 4NPRN4 antibody has been reported for use in intracellular staining followed by flow cytometric analysis.

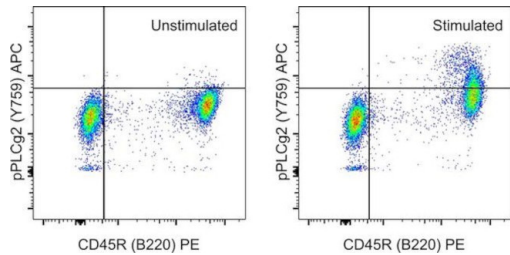
Applications Tested: This 4NPRN4 antibody has been pre-diluted and tested by intracellular staining followed by flow cytometric analysis of normal human peripheral blood cells. This may be used at 5 µL (0.06 µg) per test. A test is defined as the amount (µg) of antibody that will stain a cell sample in a final volume of 100 µL. Cell number should be determined empirically but can range from 10⁵ to 10⁸ cells/test.

Excitation: 633-647 nm; Emission: 660 nm; Laser: Red Laser



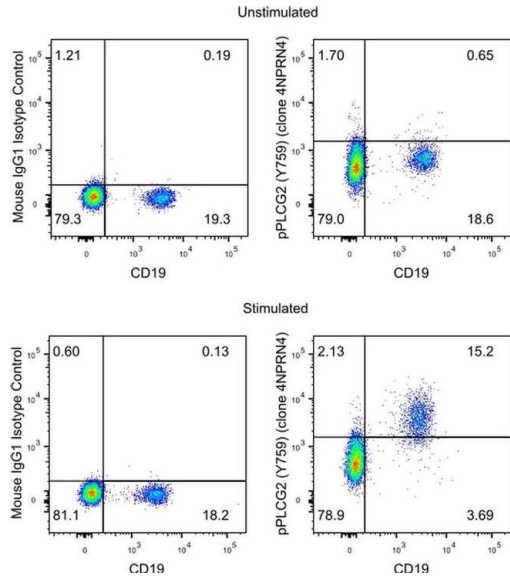
Phospho-PLCG2 (Tyr759) Antibody (17-9866-42)

Intracellular staining of stimulated human peripheral blood cells. As expected based on known expression patterns, Phospho-PLCG2 (Tyr759) clone 4NPRN4 stains B cells only following a stimulation specific to B cells, and does not stain any lymphocytes following a stimulation specific to T cells. Details: (Top row) Human peripheral blood cells unstimulated (blue histogram) or stimulated for 5 minutes with F(ab')2-Goat anti-Human IgG, IgM (H+L) Secondary Antibody, Functional Grade (purple histogram). (Bottom row) Human peripheral blood cells unstimulated (blue histogram) or stimulated for 5 minutes with CD3 Monoclonal Antibody (clone OKT3) and CD28 Monoclonal Antibody (clone CD28.2) (purple histogram). (Both rows) Cells were fixed and permeabilized with the IC Fixation & Permeabilization Buffer Set and protocol, followed by intracellular staining with CD3 Monoclonal Antibody (clone UCHT1), CD19 Monoclonal Antibody (clone HIB19), and Phospho-PLCG2 (Tyr759) (clone 4NPRN4). Cells in the lymphocyte gate were used for analysis. {TM}



Phospho-PLCG2 (Tyr759) Antibody (17-9866-42) in Flow

Normal mouse splenocytes were unstimulated (left) or stimulated for 5 minutes with F(ab')2-Goat anti-Mouse IgM (Mu chain) Secondary Antibody, Functional Grade (Product # 16-5092-85) (right). Cells were then stained intracellularly, using the Intracellular Fixation & Permeabilization Buffer Set (Product # 88-8824-00) and protocol, with CD45R (B220) Monoclonal Antibody, PE (Product # 12-0452-82) and Phospho-PLCG2 (Tyr759) Monoclonal Antibody, APC. Cells in the lymphocyte gate were used for analysis.



Phospho-PLCG2 (Tyr759) Antibody (17-9866-42)

Intracellular staining of stimulated human peripheral blood cells. As expected based on known expression patterns, Phospho-PLCG2 (Tyr759) clone 4NPRN4 stains stimulated CD19+ B cells with no staining observed without stimulation, in CD19- cells, or in the isotype control. Details: Human peripheral blood cells were stimulated for 5 minutes with F(ab')2-Goat anti-Human IgG, IgM (H+L) Secondary Antibody, Functional Grade (bottom row, Unstimulated in top row). Cells were fixed and permeabilized with the IC Fixation & Permeabilization Buffer Set and protocol, followed by intracellular staining with CD19 (clone HIB19) and Mouse IgG1 kappa Isotype Control (left) or Phospho-PLCG2 (Tyr759) (clone 4NPRN4) (right). Cells in the lymphocyte gate were used for analysis. {TM}

[View more figures on thermofisher.com](#)

For Research Use Only. Not for use in diagnostic procedures. Not for resale without express authorization. Products are warranted to operate or perform substantially in conformance with published Product specifications in effect at the time of sale, as set forth in the Production documentation, specifications and/or accompanying package inserts ("Documentation"). No claim of suitability for use in applications regulated by FDA is made. The warranty provided herein is valid only when used by properly trained individuals. Unless otherwise stated in the Documentation, this warranty is limited to one year from date of shipment when the Product is subjected to normal, proper and intended usage. This warranty does not extend to anyone other than the Buyer. Any model or sample furnished to Buyer is merely illustrative of the general type and quality of goods and does not represent that any Product will conform to such model or sample. NO OTHER WARRANTIES, EXPRESS OR IMPLIED, ARE GRANTED INCLUDING WITHOUT LIMITATION, IMPLIED WARRANTIES OF MERCHANTABILITY, FITNESS FOR ANY PARTICULAR PURPOSE, OR NON-INFRINGEMENT. BUYER'S EXCLUSIVE REMEDY FOR NON-CONFORMING PRODUCTS DURING THE WARRANTY PERIOD IS LIMITED TO REPAIR, REPLACEMENT OF OR REFUND FOR THE NON-CONFORMING PRODUCT(S) AT SELLER'S SOLE OPTION. THERE IS NO OBLIGATION TO REPAIR, REPLACE OR REFUND FOR PRODUCTS AS THE RESULT OF (I) ACCIDENT, DISASTER OR EVENT OF FORCE MAJEURE, (II) MISUSE, FAULT OR NEGLIGENCE OF OR BY BUYER, (III) USE OF THE PRODUCTS IN A MANNER FOR WHICH THEY WERE NOT DESIGNED, OR (IV) IMPROPER STORAGE AND HANDLING OF THE PRODUCTS. Unless otherwise expressly stated on the Product or in the documentation accompanying the Product, the Product is intended for research only and is not to be used for any other purpose, including without limitation, unauthorized commercial uses, in vitro diagnostic uses, ex vivo or in vivo therapeutic uses, or any type of consumption by or application to human or animals.