

# CD25 Monoclonal Antibody (PC61.5), PE-Cyanine7, eBioscience™

Product Details	
Size	100 µg
Species Reactivity	Mouse
Published Species	Mouse, Human
Host/Isotope	Rat / IgG1, lambda
Recommended Isotype Control	Rat IgG1 kappa Isotype Control (eBRG1), PE-Cyanine7, eBioscience™
Class	Monoclonal
Type	Antibody
Clone	PC61.5
Conjugate	PE-Cyanine7
Form	Liquid
Concentration	0.2 mg/mL
Purification	Affinity chromatography
Storage buffer	PBS, pH 7.2, with 0.1% gelatin
Contains	0.09% sodium azide
Storage Conditions	4° C, store in dark, DO NOT FREEZE!
RRID	AB_469608

Applications	Tested	Dilution	Published
Flow Cytometry (Flow)	✓	0.125 µg/test	68 Publications
Functional Assay (FN)	-		2 Publications

## Product Specific Information

**Description:** The PC61.5 antibody reacts with mouse CD25, the 55 kDa interleukin-2 receptor alpha chain (IL-2R alpha). CD25 is expressed by early progenitors of the T and B lineage as well as by activated mature T and B lymphocytes. By itself, CD25 binds IL-2 only with low affinity. However, CD25 associates with CD122 (IL-2 receptor beta chain) and CD132 (common gamma chain) to form the high affinity IL-2 receptor. Binding of IL-2 to both the high and low affinity classes of IL-2 receptor is inhibited by the PC61.5 antibody. CD25 plays a role in lymphocyte differentiation and activation/proliferation.

**Applications Reported:** The PC61.5 antibody has been reported for use in flow cytometric analysis.

**Applications Tested:** This PC61.5 antibody has been tested by flow cytometric analysis of mouse splenocytes. This can be used at less than or equal to 0.125 µg per test. A test is defined as the amount (µg) of antibody that will stain a cell sample in a final volume of 100 µL. Cell number should be determined empirically but can range from 10<sup>5</sup> to 10<sup>8</sup> cells/test. It is recommended that the antibody be carefully titrated for optimal performance in the assay of interest.

**Light sensitivity:** This tandem dye is sensitive photo-induced oxidation. Please protect this vial and stained samples from light.

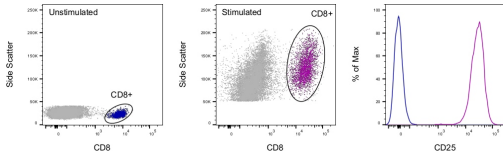
**Fixation:** Samples can be stored in IC Fixation Buffer (cat. 00-8222) (100 µL cell sample + 100 µL IC Fixation Buffer) or 1-step Fix /Lyse Solution (cat. 00-5333) for up to 3 days in the dark at 4°C with minimal impact on brightness and FRET efficiency /compensation. Some generalizations regarding fluorophore performance after fixation can be made, but clone specific

performance should be determined empirically.

Excitation: 488-561 nm; Emission: 775 nm; Laser: Blue Laser, Green Laser, Yellow-Green Laser.

Filtration: 0.2 µm post-manufacturing filtered.

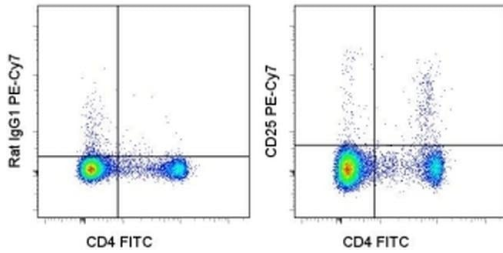
## Advanced Verification Data



### CD25 Antibody (25-0251-82)

Staining of stimulated mouse splenocytes. As expected based on known expression patterns, CD25 clone PC61.5 staining is significantly increased in CD8+ T cells after stimulation. Details: Mouse splenocytes were unstimulated (blue histogram) or stimulated for 2 days with CD3 (clone 145-2C11), CD28 (clone 37.51), and Mouse IL-2 Recombinant Protein (purple histogram). After stimulation, cells were stained with CD8 (clone 53-6.7) and CD25 (clone PC61.5). Cells in the CD8+ gate were used for analysis. Cell Treatment validation info.

## Product Images For CD25 Monoclonal Antibody (PC61.5), PE-Cyanine7, eBioscience™



### CD25 Antibody (25-0251-82) in Flow

Staining of C57Bl/6 splenocytes with Anti-Mouse CD4 FITC (Product # 11-0041-82) and 0.06 µg of Rat IgG1 K Isotype Control PE-Cyanine7 (Product # 25-4301-82) (left) or 0.06 µg of Anti-Mouse CD25 PE-Cyanine7 (right). Cells in the lymphocyte gate were used for analysis.

[View more figures on thermofisher.com](http://thermofisher.com)

## Flow Cytometry (68)

Frontiers in immunology

### Quantitative Methods for Measuring Repair Rates and Innate-Immune Cell Responses in Wounded Mouse Skin.

"25-0251 was used in Flow cytometry/Cell sorting to provide methods for measuring wound openness by digital 3D image capture and semi-automated image processing."

Authors: Li Z, Gothard E, Coles MC, Ambler CA

**Species**  
Mouse

**Dilution**  
Not Cited

**Year**  
2019

eLife

### A stochastic epigenetic switch controls the dynamics of T-cell lineage commitment.

"Published figure using CD25 monoclonal antibody (Product # 25-0251-82) in Flow Cytometry"

Authors: Ng KK, Yui MA, Mehta A, Siu S, Irwin B, Pease S, Hirose S, Elowitz MB, Rothenberg EV, Kueh HY

**Species**  
Not Applicable

**Dilution**  
Not Cited

**Year**  
2018

[View more Flow references on thermofisher.com](#)

## Functional Assay (2)

Cancer research

### Combination of tumor site-located CTL-associated antigen-4 blockade and systemic regulatory T-cell depletion induces tumor-destructive immune responses.

Authors: Tuve S, Chen BM, Liu Y, Cheng TL, Touré P, Sow PS, Feng Q, Kiviat N, Strauss R, Ni S, Li ZY, Roffler SR, Lieber A

**Species**  
Not Applicable

**Dilution**  
Not Cited

**Year**  
2007

Cancer research

### Listeria monocytogenes promotes tumor growth via tumor cell toll-like receptor 2 signaling.

Authors: Huang B, Zhao J, Shen S, Li H, He KL, Shen GX, Mayer L, Unkeless J, Li D, Yuan Y, Zhang GM, Xiong H, Feng ZH

**Species**  
Not Applicable

**Dilution**  
Not Cited

**Year**  
2007

## More applications with references on thermofisher.com

For Research Use Only. Not for use in diagnostic procedures. Not for resale without express authorization. Products are warranted to operate or perform substantially in conformance with published Product specifications in effect at the time of sale, as set forth in the Production documentation, specifications and/or accompanying package inserts ("Documentation"). No claim of suitability for use in applications regulated by FDA is made. The warranty provided herein is valid only when used by properly trained individuals. Unless otherwise stated in the Documentation, this warranty is limited to one year from date of shipment when the Product is subjected to normal, proper and intended usage. This warranty does not extend to anyone other than the Buyer. Any model or sample furnished to Buyer is merely illustrative of the general type and quality of goods and does not represent that any Product will conform to such model or sample. NO OTHER WARRANTIES, EXPRESS OR IMPLIED, ARE GRANTED INCLUDING WITHOUT LIMITATION, IMPLIED WARRANTIES OF MERCHANTABILITY, FITNESS FOR ANY PARTICULAR PURPOSE, OR NON INFRINGEMENT. BUYER'S EXCLUSIVE REMEDY FOR NON-CONFORMING PRODUCTS DURING THE WARRANTY PERIOD IS LIMITED TO REPAIR, REPLACEMENT OF OR REFUND FOR THE NON-CONFORMING PRODUCT(S) AT SELLER'S SOLE OPTION. THERE IS NO OBLIGATION TO REPAIR, REPLACE OR REFUND FOR PRODUCTS AS THE RESULT OF (I) ACCIDENT, DISASTER OR EVENT OF FORCE MAJEURE, (II) MISUSE, FAULT OR NEGLIGENCE OF OR BY BUYER, (III) USE OF THE PRODUCTS IN A MANNER FOR WHICH THEY WERE NOT DESIGNED, OR (IV) IMPROPER STORAGE AND HANDLING OF THE PRODUCTS. Unless otherwise expressly stated on the Product or in the documentation accompanying the Product, the Product is intended for research only and is not to be used for any other purpose, including without limitation, unauthorized commercial uses, in vitro diagnostic uses, ex vivo or in vivo therapeutic uses, or any type of consumption by or application to human or animals.