

# CD105 (Endoglin) Monoclonal Antibody (SN6), PE-Cyanine7, eBioscience™

Product Details	
Size	100 Tests
Species	Human
Published Species	Dog, Artificial Control, Fruit fly, Human
Expression System	Mouse / IgG1, kappa
Recommended Isotype Control	Mouse IgG1 kappa Isotype Control (P3.6.2.8.1), PE-Cyanine7, eBioscience™
Class	Monoclonal
Type	Antibody
Clone	SN6
Conjugate	PE-Cyanine7
Form	Liquid
Concentration	5 µL/Test
Purification	Affinity chromatography
Storage buffer	PBS, pH 7.2, with 0.1% gelatin, 0.2% BSA
Contains	0.09% sodium azide
Storage Conditions	4° C, store in dark, DO NOT FREEZE!
RRID	AB_11217682

Applications	Tested Dilution	Publications
Flow Cytometry (Flow)	5 µL (0.125 µg)/test	27 Publications

## Product Specific Information

**Description:** The SN6 monoclonal antibody reacts with human CD105, also known as Endoglin. CD105, an approximately 90 kDa disulfide-linked homodimer is expressed by vascular endothelial cells and some bone marrow cells and activated macrophages. It is suggested that CD105 functions in adhesion and embryonic angiogenesis.

**Applications Reported:** This SN6 antibody has been reported for use in flow cytometric analysis.

**Applications Tested:** This SN6 antibody has been pre-titrated and tested by flow cytometric analysis of the U937 cell line. This can be used at 5 µL (0.125 µg) per test. A test is defined as the amount (µg) of antibody that will stain a cell sample in a final volume of 100 µL. Cell number should be determined empirically but can range from 10<sup>5</sup> to 10<sup>8</sup> cells/test.

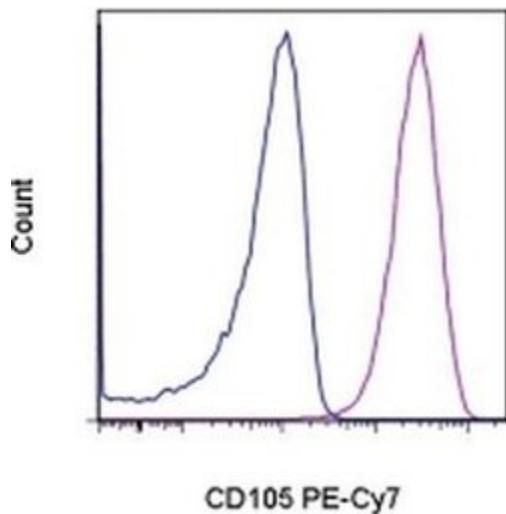
**Light sensitivity:** This tandem dye is sensitive photo-induced oxidation. Please protect this vial and stained samples from light.

**Fixation:** Samples can be stored in IC Fixation Buffer (cat. 00-8222) (100 µL cell sample + 100 µL IC Fixation Buffer) or 1-step Fix /Lyse Solution (cat. 00-5333) for up to 3 days in the dark at 4°C with minimal impact on brightness and FRET efficiency /compensation. Some generalizations regarding fluorophore performance after fixation can be made, but clone specific performance should be determined empirically.

Excitation: 488-561 nm; Emission: 775 nm; Laser: Blue Laser, Green Laser, Yellow-Green Laser.

Filtration: 0.2 µm post-manufacturing filtered.

## Product Images For CD105 (Endoglin) Monoclonal Antibody (SN6), PE-Cyanine7, eBioscience™



### CD105 (Endoglin) Antibody (25-1057-42) in Flow

Staining of U937 cells with Mouse IgG1 K Isotype Control PE-Cyanine7 (Product # 25-4714-80) (blue histogram) or Anti-Human CD105 (Endoglin) PE-Cyanine7 (purple histogram). Total viable cells, as determined by Fixable Viability Dye eFluor® 780, were used for analysis.

[View more figures on thermofisher.com](#)

## 27 References

### Flow Cytometry (27)

#### Cell discovery

#### ATF6 safeguards organelle homeostasis and cellular aging in human mesenchymal stem cells.

"Published figure using CD105 (Endoglin) monoclonal antibody (Product # 25-1057-42) in Flow Cytometry"

Authors: Wang S,Hu B,Ding Z,Dang Y,Wu J,Li D,Liu X,Xiao B,Zhang W,Ren R,Lei J,Hu H,Chen C,Chan P,Li D,Qu J, Tang F,Liu GH

**Species**  
Human

**Dilution**  
Not Cited

**Year**  
2020

#### Stem cells international

#### Therapeutic Effects of Human Urine-Derived Stem Cells in a Rat Model of Cisplatin-Induced Acute Kidney Injury In Vivo and In Vitro.

"Published figure using CD105 (Endoglin) monoclonal antibody (Product # 25-1057-42) in Flow Cytometry"

Authors: Sun B,Luo X,Yang C,Liu P,Yang Y,Dong X,Yang Z,Xu J,Zhang Y,Li L

**Species**  
Artificial Control

**Dilution**  
Not Cited

**Year**  
2020

[View more Flow references on thermofisher.com](#)

## More applications with references on thermofisher.com

For Research Use Only. Not for use in diagnostic procedures. Not for resale without express authorization. Products are warranted to operate or perform substantially in conformance with published Product specifications in effect at the time of sale, as set forth in the Production documentation, specifications and/or accompanying package inserts ("Documentation"). No claim of suitability for use in applications regulated by FDA is made. The warranty provided herein is valid only when used by properly trained individuals. Unless otherwise stated in the Documentation, this warranty is limited to one year from date of shipment when the Product is subjected to normal, proper and intended usage. This warranty does not extend to anyone other than the Buyer. Any model or sample furnished to Buyer is merely illustrative of the general type and quality of goods and does not represent that any Product will conform to such model or sample. NO OTHER WARRANTIES, EXPRESS OR IMPLIED, ARE GRANTED INCLUDING WITHOUT LIMITATION, IMPLIED WARRANTIES OF MERCHANTABILITY, FITNESS FOR ANY PARTICULAR PURPOSE, OR NON INFRINGEMENT. BUYER'S EXCLUSIVE REMEDY FOR NON-CONFORMING PRODUCTS DURING THE WARRANTY PERIOD IS LIMITED TO REPAIR, REPLACEMENT OF OR REFUND FOR THE NON-CONFORMING PRODUCT(S) AT SELLER'S SOLE OPTION. THERE IS NO OBLIGATION TO REPAIR, REPLACE OR REFUND FOR PRODUCTS AS THE RESULT OF (I) ACCIDENT, DISASTER OR EVENT OF FORCE MAJEURE, (II) MISUSE, FAULT OR NEGLIGENCE OF OR BY BUYER, (III) USE OF THE PRODUCTS IN A MANNER FOR WHICH THEY WERE NOT DESIGNED, OR (IV) IMPROPER STORAGE AND HANDLING OF THE PRODUCTS. Unless otherwise expressly stated on the Product or in the documentation accompanying the Product, the Product is intended for research only and is not to be used for any other purpose, including without limitation, unauthorized commercial uses, in vitro diagnostic uses, ex vivo or in vivo therapeutic uses, or any type of consumption by or application to human or animals.