

# CD369 (Clec7a, Dectin-1) Monoclonal Antibody (bg1fpj), PE-Cyanine7, eBioscience™

Product Details	
Size	25 µg
Species Reactivity	Mouse
Host/Isotype	Rat / IgG2a, kappa
Recommended Isotype Control	Rat IgG2a kappa Isotype Control (eBR2a), PE-Cyanine7, eBioscience™
Class	Monoclonal
Type	Antibody
Clone	bg1fpj
Conjugate	PE-Cyanine7
Excitation/Emission Max	569/780 nm
Immunogen	Baculovirus-expressed Fc-containing protein
Form	Liquid
Concentration	0.2 mg/mL
Purification	Affinity chromatography
Storage buffer	PBS, pH 7.2
Contains	0.09% sodium azide
Storage conditions	4° C, store in dark, DO NOT FREEZE!
RRID	AB_2573479

Applications	Tested Dilution	Publications
Flow Cytometry (Flow)	0.125 µg/test	-

## Product Specific Information

**Description:** The monoclonal antibody bg1fpj recognizes mouse CD369, also known as Dectin-1 or CLEC7A, a type II transmembrane protein in the C-type lectin family. The ligand is beta1, 3-glycan. Beta glycans are a main component in polysaccharides and specifically beta1,3-linked carbohydrates are found in the cell wall of fungi, plants and some bacteria. CD369 has been found to bind Candida, Aspergillus, Pneumocystis, Coccidioides and Mycobacterium. Calcium dependent binding to ligand signals through syk via the ITAM domain in the cytoplasmic portion and results in endocytosis/phagocytosis and production of cytokines (IL-2, IL-6, IL-10, TNF alpha, IL-1 beta, IL-23). A direct role in Th17 and Th1 differentiation has been attributed to CD369 signaling. CD369 is expressed predominantly on myeloid cells (neutrophils, monocytes, macrophages, and dendritic cells). Low levels have also been reported on lymphocytes and mucosal epithelium.

**Applications Reported:** This bg1fpj antibody has been reported for use in flow cytometric analysis.

**Applications Tested:** This bg1fpj antibody has been tested by flow cytometric analysis of mouse lysed whole blood cells. This can be used at less than or equal to 0.125 µg per test. A test is defined as the amount (µg) of antibody that will stain a cell sample in a final volume of 100 µL. Cell number should be determined empirically but can range from 10<sup>5</sup> to 10<sup>8</sup> cells/test. It is recommended that the antibody be carefully titrated for optimal performance in the assay of interest.

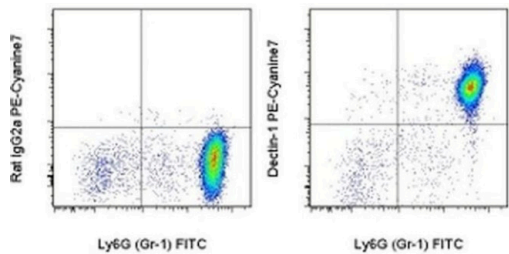
**Light sensitivity:** This tandem dye is sensitive to photo-induced oxidation. Please protect this vial and stained samples from light.

Fixation: Samples can be stored in IC Fixation Buffer (cat. 00-8222) (100 µL of cell sample + 100 µL of IC Fixation Buffer) or 1-step Fix/Lyse Solution (cat. 00-5333) for up to 3 days in the dark at 4°C with minimal impact on brightness and FRET efficiency /compensation. Some generalizations regarding fluorophore performance after fixation can be made, but clone specific performance should be determined empirically.

Excitation: 488-561 nm; Emission: 775 nm; Laser: Blue Laser, Green Laser, Yellow-Green Laser.

Filtration: 0.2 µm post-manufacturing filtered.

Product Images For CD369 (Clec7a, Dectin-1) Monoclonal Antibody (bg1fpj), PE-Cyanine7, eBioscience™



**CD369 (Clec7a, Dectin-1) Antibody (25-5859-80) in Flow**  
Staining of BALB/c lysed whole blood cells with Anti-Mouse Ly-6G (Gr-1) FITC (Product # 11-5931-82) and 0.06 µg of Rat IgG2a K Isotype Control PE-Cyanine7 (Product # 25-4321-82) (left) or 0.06 µg of Anti-Mouse CD369 (Clec7A, Dectin-1) PE-Cyanine7 (right). Total viable cells were used for analysis.

For Research Use Only. Not for use in diagnostic procedures. Not for resale without express authorization. Products are warranted to operate or perform substantially in conformance with published Product specifications in effect at the time of sale, as set forth in the Production documentation, specifications and/or accompanying package inserts ("Documentation"). No claim of suitability for use in applications regulated by FDA is made. The warranty provided herein is valid only when used by properly trained individuals. Unless otherwise stated in the Documentation, this warranty is limited to one year from date of shipment when the Product is subjected to normal, proper and intended usage. This warranty does not extend to anyone other than the Buyer. Any model or sample furnished to Buyer is merely illustrative of the general type and quality of goods and does not represent that any Product will conform to such model or sample. NO OTHER WARRANTIES, EXPRESS OR IMPLIED, ARE GRANTED INCLUDING WITHOUT LIMITATION, IMPLIED WARRANTIES OF MERCHANTABILITY, FITNESS FOR ANY PARTICULAR PURPOSE, OR NON-INFRINGEMENT. BUYER'S EXCLUSIVE REMEDY FOR NON-CONFORMING PRODUCTS DURING THE WARRANTY PERIOD IS LIMITED TO REPAIR, REPLACEMENT OF OR REFUND FOR THE NON-CONFORMING PRODUCT(S) AT SELLER'S SOLE OPTION. THERE IS NO OBLIGATION TO REPAIR, REPLACE OR REFUND FOR PRODUCTS AS THE RESULT OF (i) ACCIDENT, DISASTER OR EVENT OF FORCE MAJEURE, (ii) MISUSE, FAULT OR NEGLIGENCE OF OR BY BUYER, (iii) USE OF THE PRODUCTS IN A MANNER FOR WHICH THEY WERE NOT DESIGNED, OR (iv) IMPROPER STORAGE AND HANDLING OF THE PRODUCTS. Unless otherwise expressly stated on the Product or in the documentation accompanying the Product, the Product is intended for research only and is not to be used for any other purpose, including without limitation, unauthorized commercial uses, in vitro diagnostic uses, ex vivo or in vivo therapeutic uses, or any type of consumption by or application to human or animals.