

HA Tag Monoclonal Antibody (2-2.2.14), Alexa Fluor™ 488

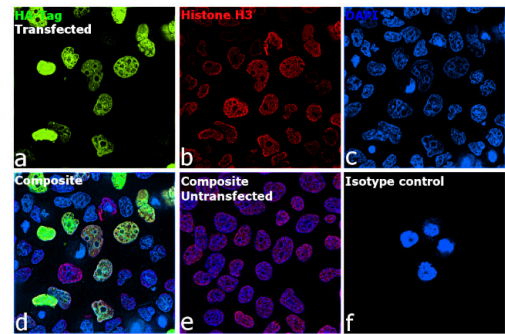
Product Details	
Size	50 µL
Species Reactivity	Tag
Published Species	Tag
Host/Isotype	Mouse / IgG1
Class	Monoclonal
Type	Antibody
Clone	2-2.2.14
Conjugate	Alexa Fluor™ 488
Excitation/Emission Max	499/520 nm
Immunogen	human influenza hemagglutinin, HA-tag, HA, HA Epitope Tag
Form	Liquid
Concentration	1 mg/mL
Purification	Protein G
Storage buffer	PBS with 1mg/mL BSA
Contains	0.05% sodium azide
Storage conditions	4° C, do not freeze
RRID	AB_2610624

Applications	Tested Dilution	Publications
Western Blot (WB)	1:500	-
Immunocytochemistry (ICC/IF)	1:200	-
Flow Cytometry (Flow)	-	1 Publication

Product Images For HA Tag Monoclonal Antibody (2-2.2.14), Alexa Fluor™ 488

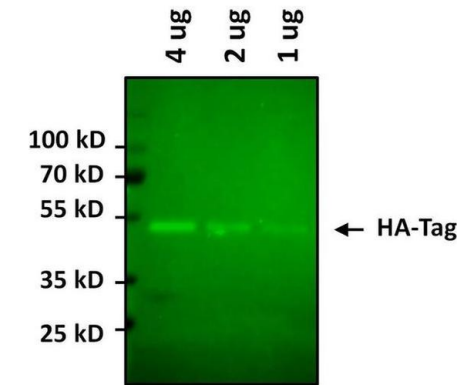
HA Tag Antibody (26183-A488) in ICC/IF

Immunofluorescent analysis of HA Tag was performed using 70% confluent HA-H3 transfected HEK-293E cells. The cells were fixed with 4% paraformaldehyde for 10 minutes, permeabilized with 0.1% Triton™ X-100 for 15 minutes and blocked with 2% BSA for 1 hour at room temperature. The cells were labeled with HA Tag Monoclonal Antibody (2-2.2.14), Alexa Fluor 488 (Product # 26183-A488) at 1:200 dilution and Histone H3 Rabbit Polyclonal Antibody (Product # 711055) at 0.5 µg/mL in 0.1% BSA, incubated at 4 degree celsius overnight and then labeled with Goat anti-Rabbit IgG (H+L) Highly Cross-Adsorbed Secondary Antibody, Alexa Fluor Plus 647 (Product # A32733) respectively a dilution of 1: 2,000 for 45 minutes at room temperature. Panel a (Nuclei: Green) represents HA Tag Monoclonal Antibody. Panel b (Nuclei: Red) represents Histone H3. Panel c (Nuclei: Blue) represents ProLong™ Diamond Antifade Mountant with DAPI (Product # P36962). Panel d represents the merged image showing the co-localization of nuclear signals in transfected cells. Panel e represents untransfected HEK-293E cells. Panel f represents control cells with isotype control antibody to assess background. The images were captured at 60X magnification.



HA Tag Antibody (26183-A488) in WB

Western blot analysis of HA Epitope Tag was performed by loading various amounts of E. coli lysate containing a multi-epitope tagged protein per well onto a 4-20% Tris-HCl polyacrylamide gel. Proteins were transferred to a low fluorescence PVDF membrane and blocked with Sea Block blocking buffer for at least 1 hour. The membrane was probed with a AlexaFluor488-conjugated HA Epitope Tag monoclonal antibody (Product # 26183-A488) at a dilution of 1:500 for 1 hour at room temperature on a rocking platform and washed in TBS-0.1% Tween-20. Detection was performed using a fluorescence imaging system.



1 Reference

Flow Cytometry (1)

Proceedings of the National Academy of Sciences of the United States of America	Year 2017
Microfluidic droplet platform for ultrahigh-throughput single-cell screening of biodiversity.	Species Tag
"26183-A488 was used in Flow cytometry/Cell sorting to develop a technique based on single-cell encapsulation in droplets of a monodisperse microfluidic double water-in-oil-in-water emulsion (MDE)."	
Authors: Terekhov SS,Smirnov IV,Stepanova AV,Bobik TV,Mokrushina YA,Ponomarenko NA,Belogurov AA,Rubtsova MP,Kartseva OV,Gomzikova MO,Moskovtsev AA,Bukatin AS,Dubina MV,Kostruykova ES,Babenko VV,Vakhitova MT, Manolov AI,Malakhova MV,Kornienko MA,Tyakht AV,Vanyushkina AA,Ilina EN,Masson P,Gabibov AG,Altman S	

For Research Use Only. Not for use in diagnostic procedures. Not for resale without express authorization. Products are warranted to operate or perform substantially in conformance with published Product specifications in effect at the time of sale, as set forth in the Production documentation, specifications and/or accompanying package inserts ("Documentation"). No claim of suitability for use in applications regulated by FDA is made. The warranty provided herein is valid only when used by properly trained individuals. Unless otherwise stated in the Documentation, this warranty is limited to one year from date of shipment when the Product is subjected to normal, proper and intended usage. This warranty does not extend to anyone other than the Buyer. Any model or sample furnished to Buyer is merely illustrative of the general type and quality of goods and does not represent that any Product will conform to such model or sample. NO OTHER WARRANTIES, EXPRESS OR IMPLIED, ARE GRANTED INCLUDING WITHOUT LIMITATION, IMPLIED WARRANTIES OF MERCHANTABILITY, FITNESS FOR ANY PARTICULAR PURPOSE, OR NON-INFRINGEMENT. BUYER'S EXCLUSIVE REMEDY FOR NON-CONFORMING PRODUCTS DURING THE WARRANTY PERIOD IS LIMITED TO REPAIR, REPLACEMENT OF OR REFUND FOR THE NON-CONFORMING PRODUCT(S) AT SELLER'S SOLE OPTION. THERE IS NO OBLIGATION TO REPAIR, REPLACE OR REFUND FOR PRODUCTS AS THE RESULT OF (i) ACCIDENT, DISASTER OR EVENT OF FORCE MAJEURE, (ii) MISUSE, FAULT OR NEGLIGENCE OF OR BY BUYER, (iii) USE OF THE PRODUCTS IN A MANNER FOR WHICH THEY WERE NOT DESIGNED, OR (iv) IMPROPER STORAGE AND HANDLING OF THE PRODUCTS. Unless otherwise expressly stated on the Product or in the documentation accompanying the Product, the Product is intended for research only and is not to be used for any other purpose, including without limitation, unauthorized commercial uses, in vitro diagnostic uses, ex vivo or in vivo therapeutic uses, or any type of consumption by or application to human or animals.