

Donkey anti-Rabbit IgG (H+L) Cross-Adsorbed Secondary Antibody, FITC

Product Details	
Size	500 µg
Species Reactivity	Rabbit
Host/Isotype	Donkey / IgG
Class	Polyclonal
Type	Secondary Antibody
Conjugate	FITC
Excitation/Emission Max	498/517 nm
Form	Lyophilized
Concentration	1.5 mg/mL
Purification	Antigen affinity chromatography
Storage buffer	PBS, pH 7.6, with 15mg/mL BSA
Contains	0.05% sodium azide
Storage conditions	4° C, store in dark
RRID	AB_228234

Applications	Tested Dilution	Publications
Immunohistochemistry (IHC)	1:50 - 1:200	-
Immunocytochemistry (ICC/IF)	2 µg/mL	0 Publication
Immunoprecipitation (IP)	1:50 - 1:200	-

Product Specific Information

Concentration may vary slightly from lot-to-lot, see lot-specific datasheet for exact concentration.

Product # 31568 has been successfully used in Western blot, IF, ICC, IHC, IP and FACS applications.

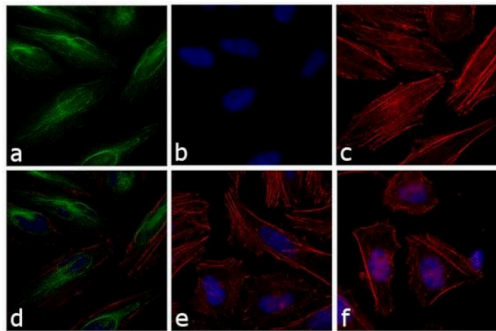
Product # 31568 reacts with the heavy chains of rabbit IgG and with the light chains common to most rabbit immunoglobulins, but does not react against non-immunoglobulin serum proteins. This antibody has been tested by ELISA and/or solid-phase adsorbed to ensure minimal cross-reaction with bovine, chicken, goat, guinea pig, hamster, horse, human, mouse, rat and sheep serum proteins. However, this antibody may cross-react with immunoglobulins from other species.

Store product protected from light at 4°C until opened. To extend the shelf-life of this product, add an equal volume of glycerol to make a final concentration of approximately 50% glycerol and store at -20°C. Fluorescein Amax= 492 nm; Emax= 520 nm. Fluorophore/Protein: 8.3 µg/mg; >3 moles FITC per mole IgG. (lot-dependent).

Reconstitute with 0.4 mL of distilled water (1.5 mg/mL after restoration).

Country of Origin: USA

Product Images For Donkey anti-Rabbit IgG (H+L) Cross-Adsorbed Secondary Antibody, FITC



Rabbit IgG (H+L) Cross-Adsorbed Secondary Antibody (31568) in ICC/IF
Immunofluorescence analysis of Donkey anti-Rabbit IgG (H+L) Cross Adsorbed Secondary Antibody, FITC conjugate (Product # 31568) was performed using HeLa cells stained with alpha Tubulin Rabbit Polyclonal Antibody (Product # PA5-16891). The cells were fixed with 4% paraformaldehyde for 10 minutes, permeabilized with 0.1% Triton™ X-100 for 10 minutes, blocked with 1% BSA for 1 hour and labeled with 2 µg/mL of rabbit primary antibody for 3 hours at room temperature. Donkey anti-Rabbit IgG (H+L) Cross Adsorbed Secondary Antibody, FITC conjugate was used at concentration of 2 µg/mL in phosphate buffered saline containing 0.2 % BSA for 45 minutes at room temperature, for detection of alpha Tubulin in the cytoplasm (Panel a: green). Nuclei (Panel b: blue) were stained with DAPI in SlowFade® Gold Antifade Mountant (Product # S36938). F-actin was stained with Rhodamine Phalloidin (Product # R415, 1:300) (Panel c: red). Panel d represents the composite image. No nonspecific staining was observed with the secondary antibody alone (panel f), or with an isotype control (panel e). The images were captured at 60X magnification.

3 References

Retrograde Regulation by the Viral Protein Kinase Epigenetically Sustains the Epstein-Barr Virus Latency-to-Lytic Switch To Augment Virus Production. J Virol (2019)

Inhibition of YAP reverses primary resistance to EGFR inhibitors in colorectal cancer cells. Oncol Rep (2018)

Chloroquine triggers Epstein-Barr virus replication through phosphorylation of KAP1/TRIM28 in Burkitt lymphoma cells. PLoS Pathog (2017)

Role of nanostructured gold surfaces on monocyte activation and Staphylococcus epidermidis biofilm formation. Int J Nanomedicine (2014)

Molecular cloning and physical mapping of the daptomycin gene cluster from Streptomyces roseosporus. J Bacteriol (1998)

For Research Use Only. Not for use in diagnostic procedures. Not for resale without express authorization. Products are warranted to operate or perform substantially in conformance with published Product specifications in effect at the time of sale, as set forth in the Production documentation, specifications and/or accompanying package inserts ("Documentation"). No claim of suitability for use in applications regulated by FDA is made. The warranty provided herein is valid only when used by properly trained individuals. Unless otherwise stated in the Documentation, this warranty is limited to one year from date of shipment when the Product is subjected to normal, proper and intended usage. This warranty does not extend to anyone other than the Buyer. Any model or sample furnished to Buyer is merely illustrative of the general type and quality of goods and does not represent that any Product will conform to such model or sample. NO OTHER WARRANTIES, EXPRESS OR IMPLIED, ARE GRANTED INCLUDING WITHOUT LIMITATION, IMPLIED WARRANTIES OF MERCHANTABILITY, FITNESS FOR ANY PARTICULAR PURPOSE, OR NON INFRINGEMENT. BUYER'S EXCLUSIVE REMEDY FOR NON-CONFORMING PRODUCTS DURING THE WARRANTY PERIOD IS LIMITED TO REPAIR, REPLACEMENT OF OR REFUND FOR THE NON-CONFORMING PRODUCT(S) AT SELLER'S SOLE OPTION. THERE IS NO OBLIGATION TO REPAIR, REPLACE OR REFUND FOR PRODUCTS AS THE RESULT OF (i) ACCIDENT, DISASTER OR EVENT OF FORCE MAJEURE, (ii) MISUSE, FAULT OR NEGLIGENCE OF OR BY BUYER, (iii) USE OF THE PRODUCTS IN A MANNER FOR WHICH THEY WERE NOT DESIGNED, OR (iv) IMPROPER STORAGE AND HANDLING OF THE PRODUCTS. Unless otherwise expressly stated on the Product or in the documentation accompanying the Product, the Product is intended for research only and is not to be used for any other purpose, including without limitation, unauthorized commercial uses, in vitro diagnostic uses, ex vivo or in vivo therapeutic uses, or any type of consumption by or application to human or animals.