

# Cyclin E Monoclonal Antibody (HE12)

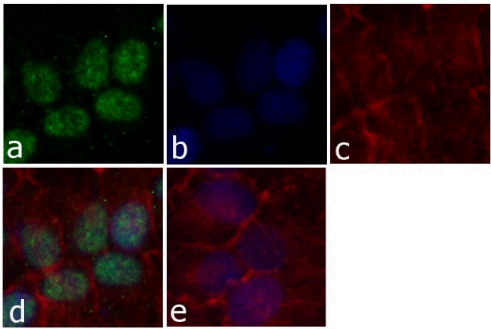
Product Details	
Size	200 µg
Species Reactivity	Human
Published Species	Human
Host/Isotype	Mouse / IgG1, kappa
Class	Monoclonal
Type	Antibody
Clone	HE12
Conjugate	Unconjugated
Immunogen	Full-length, recombinant, human cyclin E protein.
Form	Liquid
Concentration	0.5 mg/mL
Purification	Protein A
Storage buffer	PBS, pH 7.4
Contains	0.1% sodium azide
Storage conditions	-20°C
RRID	AB_2533067

Applications	Tested Dilution	Publications
Western Blot (WB)	1-2 µg/mL	10 Publications
Immunohistochemistry (IHC)	Assay-dependent	1 Publication
Immunohistochemistry (Paraffin) (IHC (P))	-	1 Publication
Immunocytochemistry (ICC/IF)	Assay-dependent	2 Publications
Flow Cytometry (Flow)	-	1 Publication
Immunoprecipitation (IP)	1 µg	-

Product Images For Cyclin E Monoclonal Antibody (HE12)

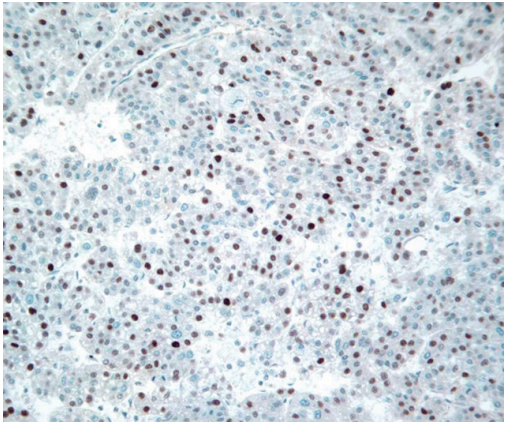
Cyclin E Antibody (32-1600) in ICC/IF

Immunofluorescent analysis of Cyclin E was done on 70% confluent log phase HeLa cells. The cells were fixed with 4% paraformaldehyde for 15 minutes; permeabilized with 0.25% Triton™ X-100 for 10 minutes followed by blocking with 5% BSA for 1 hour at room temperature. The cells were incubated with Cyclin E Mouse Monoclonal Antibody (Product # 32-1600) at 2 µg - 4 µg in 1% BSA and incubated for 3 hours at room temperature and then labeled with Alexa Fluor® 488 Rabbit Anti-Mouse IgG Secondary Antibody (Product # A-11059) at a dilution of 1:400 for 30 minutes at room temperature (Panel a: green). Nuclei (Panel b: blue) were stained with SlowFade® Gold Antifade Mountant with DAPI (Product # S36938). F-actin (Panel c: red) was stained with Alexa Fluor® 594 Phalloidin (Product # A12381). Panel d is a merged image showing nuclear localization of Cyclin E. Panel e shows no primary antibody. The images were captured at 20X magnification.



Cyclin E Antibody (32-1600) in IHC

Immunohistochemistry analysis of Cyclin E was done on hepatocellular carcinoma tissue. The tissue was probed with Cyclin E Mouse Monoclonal Antibody (Product # 32-1600).



[View more figures on thermofisher.com](#)

Western Blot (10)

<p>Cells</p> <p><b>Taspase1 Facilitates Topoisomerase II-Mediated DNA Double-Strand Breaks Driving Estrogen-Induced Transcription.</b></p> <p>"32-1600 was used in Western Blotting to characterize Taspase1 as a multifunctional co-activator of estrogen-stimulated transcription."</p> <p>Authors: Oelschläger L,Stahl P,Kaschani F,Stauber RH,Knauer SK,Hensel A</p>	<p>Year 2023</p> <p>Species Human</p>
<p>PLoS pathogens</p> <p><b>MicroRNA-18a targeting of the STK4/MST1 tumour suppressor is necessary for transformation in HPV positive cervical cancer.</b></p> <p>"32-1600 was used in Western Blot to investigate how the Hippo pathway may be de-regulated in cervical cancer."</p> <p>Authors: Morgan EL,Patterson MR,Ryder EL,Lee SY,Wasson CW,Harper KL,Li Y,Griffin S,Blair GE,Whitehouse A,Macdonald A</p>	<p>Year 2020</p> <p>Species Human</p> <p>Dilution 1:1000</p>

[View more WB references on thermofisher.com](#)

Immunohistochemistry (1)

<p>Clinical cancer research : an official journal of the American Association for Cancer Research</p> <p><b>Molecular classification and prognostication of adrenocortical tumors by transcriptome profiling.</b></p> <p>Authors: Giordano TJ,Kuick R,Else T,Gauger PG,Vinco M,Bauersfeld J,Sanders D,Thomas DG,Doherty G,Hammer G</p>	<p>Year 2009</p> <p>Species Human</p>
--	---

Immunohistochemistry (Paraffin) (1)

<p>Oncotarget</p> <p><b>Immunohistochemical prediction of lapatinib efficacy in advanced HER2-positive breast cancer patients.</b></p> <p>"32-1600 was used in immunohistochemistry - paraffin section to correlate expression of proteins in ErbB family signaling pathways with the clinical efficacy of lapatinib"</p> <p>Authors: Duchnowska R,Wysocki PJ,Korski K,Czartoryska-Arukowicz B,Niwiska A,Orlikowska M,Radecka B,Studziski M,Demlova R,Ziółkowska B,Merdalska M,Hajac ,Myliwiec P,Zuziak D,Dbaska-Szmich S,Lang I,Foszczyska-Koda M,Karczmarek-Borowska B,awrocki A,Kowalczyk A,Biernat W,Jassem J</p>	<p>Year 2016</p> <p>Species Human</p> <p>Dilution 1:50</p>
---	--

More applications with references on thermofisher.com

- ICC/IF (2)
- Flow (1)

For Research Use Only. Not for use in diagnostic procedures. Not for resale without express authorization. Products are warranted to operate or perform substantially in conformance with published Product specifications in effect at the time of sale, as set forth in the Production documentation, specifications and/or accompanying package inserts ("Documentation"). No claim of suitability for use in applications regulated by FDA is made. The warranty provided herein is valid only when used by properly trained individuals. Unless otherwise stated in the Documentation, this warranty is limited to one year from date of shipment when the Product is subjected to normal, proper and intended usage. This warranty does not extend to anyone other than the Buyer. Any model or sample furnished to Buyer is merely illustrative of the general type and quality of goods and does not represent that any Product will conform to such model or sample. NO OTHER WARRANTIES, EXPRESS OR IMPLIED, ARE GRANTED INCLUDING WITHOUT LIMITATION, IMPLIED WARRANTIES OF MERCHANTABILITY, FITNESS FOR ANY PARTICULAR PURPOSE, OR NON INFRINGEMENT. BUYER'S EXCLUSIVE REMEDY FOR NON-CONFORMING PRODUCTS DURING THE WARRANTY PERIOD IS LIMITED TO REPAIR, REPLACEMENT OF OR REFUND FOR THE NON-CONFORMING PRODUCT(S) AT SELLER'S SOLE OPTION. THERE IS NO OBLIGATION TO REPAIR, REPLACE OR REFUND FOR PRODUCTS AS THE RESULT OF (I) ACCIDENT, DISASTER OR EVENT OF FORCE MAJEURE, (II) MISUSE, FAULT OR NEGLIGENCE OF OR BY BUYER, (III) USE OF THE PRODUCTS IN A MANNER FOR WHICH THEY WERE NOT DESIGNED, OR (IV) IMPROPER STORAGE AND HANDLING OF THE PRODUCTS. Unless otherwise expressly stated on the Product or in the documentation accompanying the Product, the Product is intended for research only and is not to be used for any other purpose, including without limitation, unauthorized commercial uses, in vitro diagnostic uses, ex vivo or in vivo therapeutic uses, or any type of consumption by or application to human or animals.