

# Connexin 50 Monoclonal Antibody (C6)

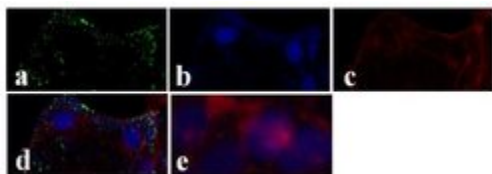
Product Details	
Size	100 µg
Species Reactivity	Human, Mouse, Sheep, Rat
Published Species	Rabbit, Pig, Rat, Mouse, Human
Host/Isotype	Mouse / IgM, kappa
Class	Monoclonal
Type	Antibody
Clone	C6
Conjugate	Unconjugated
Immunogen	This antibody was prepared against urea/alkali stripped sheep lens membranes.
Form	Liquid
Concentration	0.5 mg/mL
Purification	Size-exclusion chromatography
Storage buffer	PBS, pH 7.4
Contains	0.1% sodium azide
Storage conditions	-20°C
RRID	AB_2533120

Applications	Tested Dilution	Publications
Western Blot (WB)	Assay-dependent	8 Publications
Immunohistochemistry (IHC)	-	2 Publications
Immunohistochemistry (Paraffin) (IHC (P))	-	1 Publication
Immunohistochemistry (Frozen) (IHC (F))	-	1 Publication
Immunocytochemistry (ICC/IF)	Assay-dependent	2 Publications
ELISA (ELISA)	Assay-dependent	-
Immunoprecipitation (IP)	Assay-dependent	1 Publication
Miscellaneous PubMed (Misc)	-	1 Publication

## Product Images For Connexin 50 Monoclonal Antibody (C6)

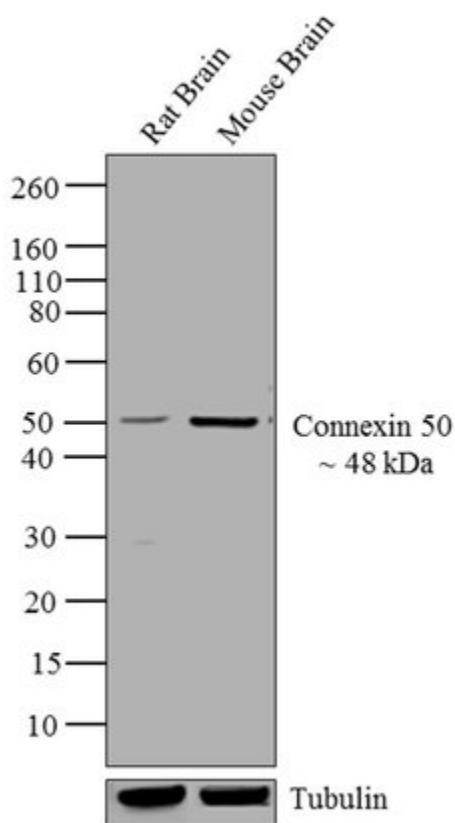
### Connexin 50 Antibody (33-4300) in ICC/IF

Immunofluorescent analysis of Connexin 50 was done on 90% confluent log phase CaCo-2 cells. The cells were fixed with 4% paraformaldehyde for 15 minutes; permeabilized with 0.25% Triton™ X-100 for 10 minutes followed by blocking with 5% BSA for 1 hour at room temperature. The cells were incubated with Connexin 50 Mouse Monoclonal Antibody (Product # 33-4300) at 1 µg/mL in 1% BSA and incubated for 3 hours at room temperature and then labeled with Alexa Fluor 488 Rabbit Anti-Mouse IgG Secondary Antibody (Product # A-11059) at a dilution of 1:400 for 30 minutes at room temperature (Panel a: green). Nuclei (Panel b: blue) were stained with SlowFade Gold Antifade Mountant with DAPI (Product # S36938). F-actin (Panel c: red) was stained with Alexa Fluor 594 Phalloidin (Product # A12381). Panel d is a merged image showing junctional localization of Alexa Fluor 488 Rabbit Anti-Mouse IgG Secondary Antibody (Product # A-11059). and panel e is a no primary antibody control. The images were captured at 20X magnification.



### Connexin 50 Antibody (33-4300) in WB

Western blot analysis of Connexin 50 was performed by loading 20 µg of Rat Brain (lane1) and Mouse Brain (lane2) lysates using Novex® NuPAGE® 4-12 % Bis-Tris gel (Product # NP0321BOX), XCell SureLock Electrophoresis System (Product # EI0002), Novex® Sharp Pre-Stained Protein Standard (LC5800), and iBlot® Dry Blotting System (IB21001). Proteins were transferred to a nitrocellulose membrane and blocked with 5 % skim milk for 1 hour at room temperature. Connexin 50 was detected at ~48 kDa using Connexin 50 Mouse Monoclonal Antibody (Product # 33-4300) at 0.5-1 µg/mL in 2.5 % skim milk at 4°C overnight on a rocking platform. Goat Anti-Mouse IgG - HRP Secondary Antibody (Product # 62-6520) at 1:4000 dilution was used and chemiluminescent detection was performed using Pierce™ ECL Western Blotting Substrate (Product # 32106).



## Western Blot (8)

American journal of physiology. Endocrinology and metabolism

### Cholesterol metabolism and Cx43, Cx46, and Cx50 gap junction protein expression and localization in normal and diabetic and obese ob/ob and db/db mouse testes.

"33-4300 was used in Western Blotting to indicate that the db mutation-induced impairment of meiosis may arise from imbalances in cholesterol metabolism and upregulated Cx43 expression and phosphorylation in tubules."

Authors: Pelletier RM,Akpovi CD,Chen L,Vitale ML

**Species**  
Mouse

**Dilution**  
1:25

**Year**  
2018

Cell and tissue research

### Connexin 50 modulates Sox2 expression in spinal-cord-derived ependymal stem/progenitor cells.

"33-4300 was used in immunocytochemistry and western blot to investigate modulation of Sox2 expression in spinal-cord-derived ependymal stem/progenitor cells by connexin 50"

Authors: Rodriguez-Jimenez FJ,Alastrue A,Stojkovic M,Erceg S,Moreno-Manzano V

**Species**  
Not Applicable

**Dilution**  
1:500

**Year**  
2016

[View more WB references on thermofisher.com](#)

## Immunohistochemistry (2)

The Journal of neuroscience : the official journal of the Society for Neuroscience

### Connexin Signaling Is Involved in the Reactivation of a Latent Stem Cell Niche after Spinal Cord Injury.

"33-4300 was used in Immunohistochemistry to study the role of connexin signalling in the central canal in the reactivation of latent stem cell after spinal cord injury."

Authors: Fabbiani G,Reali C,Valentin-Kahan A,Rehermann MI,Fagetti J,Falco MV,Russo RE

**Species**  
Mouse

**Dilution**  
1:3000

**Year**  
2020

The Journal of comparative neurology

### Connexin50 couples axon terminals of mouse horizontal cells by homotypic gap junctions.

"33-4300 was used in immunocytochemistry, immunohistochemistry, and western blot to investigate homotypic gap junctions of Connexin50 in axon terminals of mouse horizontal cells"

Authors: Dorgau B,Herrling R,Schultz K,Greb H,Segelken J,Ströh S,Bolte P,Weiler R,Dedek K,Janssen-Bienhold U

**Species**  
Mouse

**Dilution**  
0.7 µg/mL

**Year**  
2015

## More applications with references on thermofisher.com

IHC (P) (1)

IHC (F) (1)

ICC/IF (2)

IP (1)

Misc (1)

For Research Use Only. Not for use in diagnostic procedures. Not for resale without express authorization. Products are warranted to operate or perform substantially in conformance with published Product specifications in effect at the time of sale, as set forth in the Production documentation, specifications and/or accompanying package inserts ("Documentation"). No claim of suitability for use in applications regulated by FDA is made. The warranty provided herein is valid only when used by properly trained individuals. Unless otherwise stated in the Documentation, this warranty is limited to one year from date of shipment when the Product is subjected to normal, proper and intended usage. This warranty does not extend to anyone other than the Buyer. Any model or sample furnished to Buyer is merely illustrative of the general type and quality of goods and does not represent that any Product will conform to such model or sample. NO OTHER WARRANTIES, EXPRESS OR IMPLIED, ARE GRANTED INCLUDING WITHOUT LIMITATION, IMPLIED WARRANTIES OF MERCHANTABILITY, FITNESS FOR ANY PARTICULAR PURPOSE, OR NON INFRINGEMENT. BUYER'S EXCLUSIVE REMEDY FOR NON-CONFORMING PRODUCTS DURING THE WARRANTY PERIOD IS LIMITED TO REPAIR, REPLACEMENT OF OR REFUND FOR THE NON-CONFORMING PRODUCT(S) AT SELLER'S SOLE OPTION. THERE IS NO OBLIGATION TO REPAIR, REPLACE OR REFUND FOR PRODUCTS AS THE RESULT OF (I) ACCIDENT, DISASTER OR EVENT OF FORCE MAJEURE, (II) MISUSE, FAULT OR NEGLIGENCE OF OR BY BUYER, (III) USE OF THE PRODUCTS IN A MANNER FOR WHICH THEY WERE NOT DESIGNED, OR (IV) IMPROPER STORAGE AND HANDLING OF THE PRODUCTS. Unless otherwise expressly stated on the Product or in the documentation accompanying the Product, the Product is intended for research only and is not to be used for any other purpose, including without limitation, unauthorized commercial uses, in vitro diagnostic uses, ex vivo or in vivo therapeutic uses, or any type of consumption by or application to human or animals.