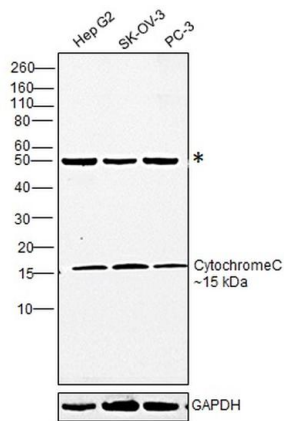


Cytochrome C Monoclonal Antibody (7H8.2C12)

Product Details	
Size	200 µg
Species Reactivity	Fruit fly, Horse, Human, Mouse, Rabbit, Rat, Xenopus
Published Species	Rat, Fish, Human, Mouse, Chicken
Host/Isotype	Mouse / IgG2b, kappa
Class	Monoclonal
Type	Antibody
Clone	7H8.2C12
Conjugate	Unconjugated
Immunogen	Equine Cytochrome c.
Form	Liquid
Concentration	0.5 mg/mL
Purification	Affinity chromatography
Storage buffer	PBS, pH 7.4
Contains	0.1% sodium azide
Storage conditions	-20°C
RRID	AB_2533142

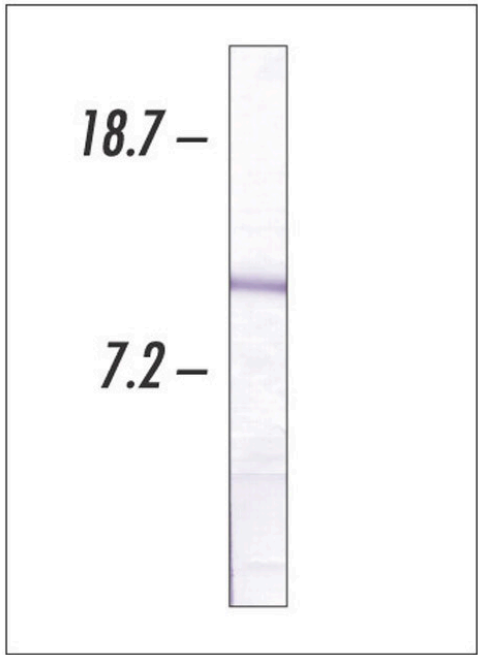
Applications	Tested Dilution	Publications
Western Blot (WB)	1:1,000	12 Publications
Immunohistochemistry (IHC)	-	1 Publication
Immunohistochemistry (Paraffin) (IHC (P))	-	1 Publication
Immunocytochemistry (ICC/IF)	-	2 Publications
Immunoprecipitation (IP)	-	2 Publications
Miscellaneous PubMed (Misc)	-	4 Publications

Product Images For Cytochrome C Monoclonal Antibody (7H8.2C12)



Cytochrome C Antibody (33-8500) in WB

Western blot was performed using Anti-Cytochrome C Monoclonal Antibody (7H8.2C12) (Product # 33-8500) and a ~15kDa band corresponding to Cytochrome C, along with an characterized band(*) was observed across cell lines tested. Membrane enriched extracts (30 µg lysate) of Hep G2 (Lane 1), SK-O-V3 (Lane 2) and PC-3 (Lane 3) were electrophoresed using Novex™ 16% Tricine Protein Gel (Product # EC6695BOX). Resolved proteins were then transferred onto a Nitrocellulose membrane (Product # IB23001) by iBlot® 2 Dry Blotting System (Product # IB21001). The blot was probed with the primary antibody (1:1000 dilution) and detected by chemiluminescence with Goat anti-Mouse IgG (H+L) Superclonal™ Recombinant Secondary Antibody, HRP (Product # A28177, 1: 4000 dilution) using the iBright FL 1000 (Product # A32752). Chemiluminescent detection was performed using Novex® ECL Chemiluminescent Substrate Reagent Kit (Product # WP20005).



Cytochrome C Antibody (33-8500) in WB

Western blot of Cytochrome c expression in HeLa cells using Ms x Cytochrome c (Product # 33-8500)

[View more figures on thermofisher.com](https://www.thermofisher.com)

Western Blot (12)

<p>PloS one</p> <p>Effect of immune modulation on the skeletal muscle mitochondrial exercise response: An exploratory study in mice with cancer.</p> <p>"Published figure using Cytochrome C monoclonal antibody (Product # 33-8500) in Western Blot"</p> <p>Authors: Buss LA,Hock B,Merry TL,Ang AD,Robinson BA,Currie MJ,Dachs GU</p>	<p>Year 2021</p>
<p>Metabolites</p> <p>Impact of Exercise and Detraining during Childhood on Brown Adipose Tissue Whitening in Obesity.</p> <p>"Published figure using Cytochrome C monoclonal antibody (Product # 33-8500) in Western Blot"</p> <p>Authors: Takaishi K,Oshima T,Eto H,Nishihira M,Nguyen ST,Ochi R,Fujita N,Urakawa S</p>	<p>Year 2021</p>

[View more WB references on thermofisher.com](#)

Immunohistochemistry (1)

<p>Developmental cell</p> <p>Mitochondrial disruption in Drosophila apoptosis.</p> <p>"33-8500 was used in immunohistochemistry and western blot to study how Reaper, Hid, and Drp1 regulate mitochondrial disruption in fly apoptosis"</p> <p>Authors: Abdelwahid E,Yokokura T,Krieser RJ,Balasundaram S,Fowle WH,White K</p>	<p>Year 2007</p> <p>Dilution 1:200</p>
--	--

Immunohistochemistry (Paraffin) (1)

<p>Oxidative medicine and cellular longevity</p> <p>The Effects of Potassium Cyanide on the Functional Recovery of Isolated Rat Hearts after Ischemia and Reperfusion: The Role of Oxidative Stress.</p> <p>"Published figure using Cytochrome C monoclonal antibody (Product # 33-8500) in Immunohistochemistry"</p> <p>Authors: Petkovic AM,Jakovljevic VL,Bradic JV,Jeremic JN,Jeremic NS,Nikolic Turnic TR,Jovicic NU,Rosic VZ,Srejovic IM,Zivkovic VI</p>	<p>Year 2018</p> <p>Species Rat</p>
--	---

More applications with references on thermofisher.com

- ICC/IF (2)
- IP (2)
- Misc (4)

For Research Use Only. Not for use in diagnostic procedures. Not for resale without express authorization. Products are warranted to operate or perform substantially in conformance with published Product specifications in effect at the time of sale, as set forth in the Production documentation, specifications and/or accompanying package inserts ("Documentation"). No claim of suitability for use in applications regulated by FDA is made. The warranty provided herein is valid only when used by properly trained individuals. Unless otherwise stated in the Documentation, this warranty is limited to one year from date of shipment when the Product is subjected to normal, proper and intended usage. This warranty does not extend to anyone other than the Buyer. Any model or sample furnished to Buyer is merely illustrative of the general type and quality of goods and does not represent that any Product will conform to such model or sample. NO OTHER WARRANTIES, EXPRESS OR IMPLIED, ARE GRANTED INCLUDING WITHOUT LIMITATION, IMPLIED WARRANTIES OF MERCHANTABILITY, FITNESS FOR ANY PARTICULAR PURPOSE, OR NON-INFRINGEMENT. BUYER'S EXCLUSIVE REMEDY FOR NON-CONFORMING PRODUCTS DURING THE WARRANTY PERIOD IS LIMITED TO REPAIR, REPLACEMENT OF OR REFUND FOR THE NON-CONFORMING PRODUCT(S) AT SELLER'S SOLE OPTION. THERE IS NO OBLIGATION TO REPAIR, REPLACE OR REFUND FOR PRODUCTS AS THE RESULT OF (I) ACCIDENT, DISASTER OR EVENT OF FORCE MAJEURE, (II) MISUSE, FAULT OR NEGLIGENCE OF OR BY BUYER, (III) USE OF THE PRODUCTS IN A MANNER FOR WHICH THEY WERE NOT DESIGNED, OR (IV) IMPROPER STORAGE AND HANDLING OF THE PRODUCTS. Unless otherwise expressly stated on the Product or in the documentation accompanying the Product, the Product is intended for research only and is not to be used for any other purpose, including without limitation, unauthorized commercial uses, in vitro diagnostic uses, ex vivo or in vivo therapeutic uses, or any type of consumption by or application to human or animals.