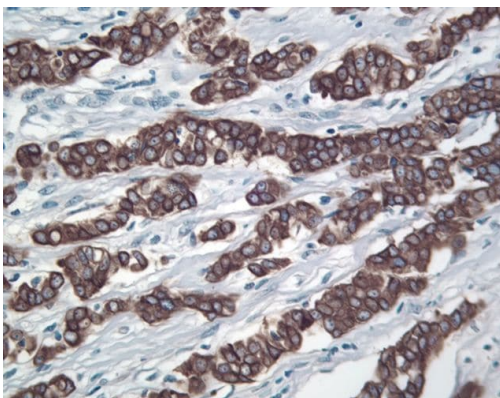


Prolactin Receptor Polyclonal Antibody

Product Details	
Size	100 µg
Species Reactivity	Human, Rat
Published Species	Human
Host/Isotope	Rabbit / IgG
Class	Polyclonal
Type	Antibody
Conjugate	Unconjugated
Immunogen	Synthetic peptide derived from the C-terminal sequence of human prolactin receptor intermediate isoform.
Form	Liquid
Concentration	0.25 mg/mL
Purification	Antigen affinity chromatography
Storage buffer	PBS, pH 7.4
Contains	0.1% sodium azide
Storage Conditions	-20°C
RRID	AB_2533172

Applications	Tested	Dilution	Published
Immunohistochemistry (IHC)	-		1 Publication
Western Blot (WB)	✓	Assay Dependent	5 Publications
ELISA (ELISA)	✓	Assay Dependent	

Product Images For Prolactin Receptor Polyclonal Antibody



Prolactin Receptor Antibody (34-4800) in IHC
 Immunohistochemical staining human breast carcinoma tissue using Rb anti-PRLr (PAD: ZMD.106) (Product # 34-4800).

6 References

Immunohistochemistry (1)

The Journal of endocrinology

Re-evaluation of the prolactin receptor expression in human breast cancer.

Authors: Galsgaard ED,Rasmussen BB,Folkesson CG,Rasmussen LM,Berchtold MW,Christensen L,Panina S

Species
Human

Dilution
Not Cited

Year
2009

Western Blot (5)

The Journal of endocrinology

Re-evaluation of the prolactin receptor expression in human breast cancer.

Authors: Galsgaard ED,Rasmussen BB,Folkesson CG,Rasmussen LM,Berchtold MW,Christensen L,Panina S

Species
Human

Dilution
Not Cited

Year
2009

Molecular endocrinology (Baltimore, Md.)

SRC family kinases accelerate prolactin receptor internalization, modulating trafficking and signaling in breast cancer cells.

"34-4800 was used in western blot to demonstrate that src family kinases mediates ligand-initiated long isoform of the PRL receptor internalization, down-regulation, and signal transduction in breast cancer cells"

Authors: Piazza TM,Lu JC,Carver KC,Schuler LA

Species
Not Applicable

Dilution
Not Cited

Year
2009

[View more WB references on thermofisher.com](#)

More applications with references on thermofisher.com

For Research Use Only. Not for use in diagnostic procedures. Not for resale without express authorization. Products are warranted to operate or perform substantially in conformance with published Product specifications in effect at the time of sale, as set forth in the Production documentation, specifications and/or accompanying package inserts ("Documentation"). No claim of suitability for use in applications regulated by FDA is made. The warranty provided herein is valid only when used by properly trained individuals. Unless otherwise stated in the Documentation, this warranty is limited to one year from date of shipment when the Product is subjected to normal, proper and intended usage. This warranty does not extend to anyone other than the Buyer. Any model or sample furnished to Buyer is merely illustrative of the general type and quality of goods and does not represent that any Product will conform to such model or sample. NO OTHER WARRANTIES, EXPRESS OR IMPLIED, ARE GRANTED INCLUDING WITHOUT LIMITATION, IMPLIED WARRANTIES OF MERCHANTABILITY, FITNESS FOR ANY PARTICULAR PURPOSE, OR NON INFRINGEMENT. BUYER'S EXCLUSIVE REMEDY FOR NON-CONFORMING PRODUCTS DURING THE WARRANTY PERIOD IS LIMITED TO REPAIR, REPLACEMENT OF OR REFUND FOR THE NON-CONFORMING PRODUCT(S) AT SELLER'S SOLE OPTION. THERE IS NO OBLIGATION TO REPAIR, REPLACE OR REFUND FOR PRODUCTS AS THE RESULT OF (I) ACCIDENT, DISASTER OR EVENT OF FORCE MAJEURE, (II) MISUSE, FAULT OR NEGLIGENCE OF OR BY BUYER, (III) USE OF THE PRODUCTS IN A MANNER FOR WHICH THEY WERE NOT DESIGNED, OR (IV) IMPROPER STORAGE AND HANDLING OF THE PRODUCTS. Unless otherwise expressly stated on the Product or in the documentation accompanying the Product, the Product is intended for research only and is not to be used for any other purpose, including without limitation, unauthorized commercial uses, in vitro diagnostic uses, ex vivo or in vivo therapeutic uses, or any type of consumption by or application to human or animals.