

JIP1 Polyclonal Antibody

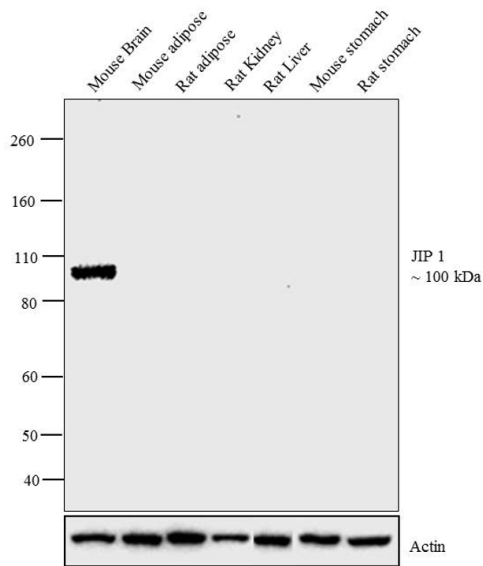
Product Details	
Size	100 µg
Species Reactivity	Human, Mouse, Rat
Published Species	Mouse
Host/Isotope	Rabbit / IgG
Class	Polyclonal
Type	Antibody
Conjugate	Unconjugated
Immunogen	Synthetic peptide derived from the N-terminal region of the human JIP1 protein.
Form	Liquid
Concentration	0.25 mg/mL
Purification	Antigen affinity chromatography
Storage buffer	PBS, pH 7.4
Contains	0.1% sodium azide
Storage Conditions	-20°C
RRID	AB_2533173

Applications	Tested	Dilution	Published
Immunofluorescence (IF)	✓	2 µg/mL	1 Publication
Immunohistochemistry (IHC)	-		1 Publication
Western Blot (WB)	✓	1 µg/mL	1 Publication
Immunoprecipitation (IP)	✓	Assay Dependent	1 Publication
Immunocytochemistry (ICC)	✓	2 µg/mL	

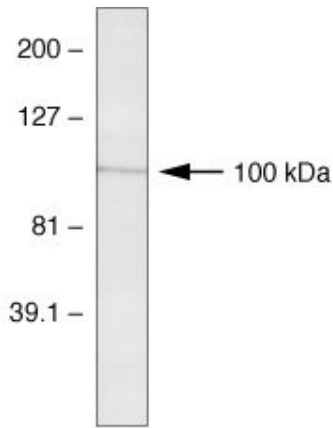
Advanced Verification Data

JIP1 Antibody (34-5200)

Antibody specificity was demonstrated by detection of differential basal expression of the target across tissue models owing to their inherent genetic constitution. Relative expression of JIP1 was observed in Mouse Brain, Mouse Adipose, Rat Adipose, Rat Kidney, Rat Liver, Mouse Stomach and Rat Stomach in Western Blot using JIP1 Polyclonal Antibody (Product # 34-5200). JIP1 is reported to be expressed in brain tissue and not in other tissues like adipose, kidney, liver and stomach. Relative expression validation info.



Product Images For JIP1 Polyclonal Antibody



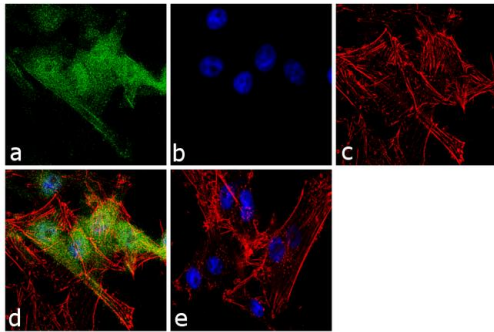
JIP1 Antibody (34-5200) in WB

Western blot analysis of mouse brain homogenates using Rb anti-JIP-1 (N-term) (Product # 34-5200)

Western blot analysis of mouse brain homogenates using Rb anti-JIP-1 (N-term) (Cat. no. 34-5200)

JIP1 Antibody (34-5200) in IF

Immunofluorescence analysis of JIP 1 (N-TERM) was performed using 70% confluent log phase U-87 MG cells. The cells were fixed with 4% paraformaldehyde for 10 minutes, permeabilized with 0.1% Triton™ X-100 for 10 minutes, and blocked with 1% BSA for 1 hour at room temperature. The cells were labeled with JIP 1 Rabbit Polyclonal Antibody (Product # 34-5200) at 2µg/mL in 0.1% BSA and incubated for 3 hours at room temperature and then labeled with Goat anti-Rabbit IgG (H+L) Superclonal™ Secondary Antibody, Alexa Fluor® 488 conjugate (Product # A27034) at a dilution of 1:2000 for 45 minutes at room temperature (Panel a: green). Nuclei (Panel b: blue) were stained with SlowFade® Gold Antifade Mountant with DAPI (Product # S36938). F-actin (Panel c: red) was stained with Alexa Fluor® 555 Rhodamine Phalloidin (Product # R415, 1:300). Panel d represents the merged image showing cytoplasmic and nuclear localization. Panel e shows the no primary antibody control. The images were captured at 60X magnification.



[View more figures on thermofisher.com](https://www.thermofisher.com)

4 References

Immunofluorescence (1)

The Journal of biological chemistry

Phosphorylated Tau interacts with c-Jun N-terminal kinase-interacting protein 1 (JIP1) in Alzheimer disease.

Authors: Ittner LM,Ke YD,Götz J

Species
Mouse

Dilution
Not Cited

Year
2009

Immunohistochemistry (1)

The Journal of biological chemistry

Phosphorylated Tau interacts with c-Jun N-terminal kinase-interacting protein 1 (JIP1) in Alzheimer disease.

Authors: Ittner LM,Ke YD,Götz J

Species
Mouse

Dilution
Not Cited

Year
2009

Western Blot (1)

The Journal of biological chemistry

Phosphorylated Tau interacts with c-Jun N-terminal kinase-interacting protein 1 (JIP1) in Alzheimer disease.

Authors: Ittner LM,Ke YD,Götz J

Species
Mouse

Dilution
Not Cited

Year
2009

Immunoprecipitation (1)

The Journal of biological chemistry

Jun NH2-terminal kinase (JNK) interacting protein 1 (JIP1) binds the cytoplasmic domain of the Alzheimer's beta-amyloid precursor protein (APP).

Authors: Scheinfeld MH,Roncarati R,Vito P,Lopez PA,Abdallah M,D'Adamio L

Species
Mouse

Dilution
Not Cited

Year
2002

For Research Use Only. Not for use in diagnostic procedures. Not for resale without express authorization. Products are warranted to operate or perform substantially in conformance with published Product specifications in effect at the time of sale, as set forth in the Production documentation, specifications and/or accompanying package inserts ("Documentation"). No claim of suitability for use in applications regulated by FDA is made. The warranty provided herein is valid only when used by properly trained individuals. Unless otherwise stated in the Documentation, this warranty is limited to one year from date of shipment when the Product is subjected to normal, proper and intended usage. This warranty does not extend to anyone other than the Buyer. Any model or sample furnished to Buyer is merely illustrative of the general type and quality of goods and does not represent that any Product will conform to such model or sample. NO OTHER WARRANTIES, EXPRESS OR IMPLIED, ARE GRANTED INCLUDING WITHOUT LIMITATION, IMPLIED WARRANTIES OF MERCHANTABILITY, FITNESS FOR ANY PARTICULAR PURPOSE, OR NON INFRINGEMENT. BUYER'S EXCLUSIVE REMEDY FOR NON-CONFORMING PRODUCTS DURING THE WARRANTY PERIOD IS LIMITED TO REPAIR, REPLACEMENT OF OR REFUND FOR THE NON-CONFORMING PRODUCT(S) AT SELLER'S SOLE OPTION. THERE IS NO OBLIGATION TO REPAIR, REPLACE OR REFUND FOR PRODUCTS AS THE RESULT OF (I) ACCIDENT, DISASTER OR EVENT OF FORCE MAJEURE, (II) MISUSE, FAULT OR NEGLIGENCE OF OR BY BUYER, (III) USE OF THE PRODUCTS IN A MANNER FOR WHICH THEY WERE NOT DESIGNED, OR (IV) IMPROPER STORAGE AND HANDLING OF THE PRODUCTS. Unless otherwise expressly stated on the Product or in the documentation accompanying the Product, the Product is intended for research only and is not to be used for any other purpose, including without limitation, unauthorized commercial uses, in vitro diagnostic uses, ex vivo or in vivo therapeutic uses, or any type of consumption by or application to human or animals.