

Claudin 5 Monoclonal Antibody (4C3C2), Alexa Fluor 488

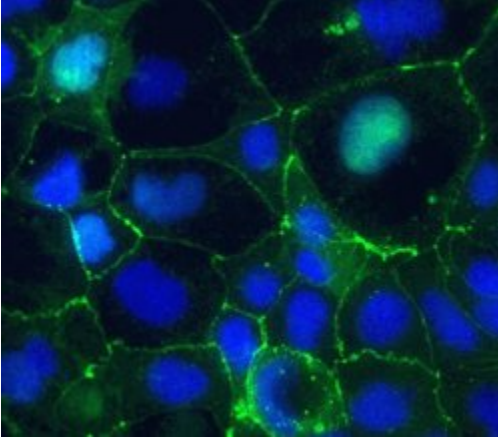
Product Details	
Size	100 µg
Species Reactivity	Human, Mouse, Rat
Published Species	Mouse, Human
Host/Isotope	Mouse / IgG1
Class	Monoclonal
Type	Antibody
Clone	4C3C2
Conjugate	Alexa Fluor® 488
Immunogen	Synthetic peptide derived from the mouse Claudin-5 protein
Form	Liquid
Concentration	0.5 mg/mL
Purification	Protein A
Storage buffer	PBS, pH 7.4, with 4mg/mL BSA
Contains	0.1% sodium azide
Storage Conditions	4° C
RRID	AB_2532189

Applications	Tested Dilution	Publications
ELISA (ELISA)	Assay Dependent	-
Immunocytochemistry (ICC)	Assay Dependent	2 Publications
Immunofluorescence (IF)	5-10 µg/mL	11 Publications
Immunohistochemistry (IHC)	5-10 µg/mL	16 Publications
Immunoprecipitation (IP)	Assay Dependent	-
Western Blot (WB)	Assay Dependent	3 Publications
Immunohistochemistry (Frozen) (IHC (F))	-	2 Publications
Immunohistochemistry - Free Floating (IHC (Free))	-	1 Publication
Miscellaneous PubMed (Misc)	-	2 Publications

Product Specific Information

Reactivity has been confirmed with rat, human and mouse Claudin-5 using rat lung, mouse kidney, mouse small intestine, mouse lung homogenates, human colon tissue, and CACO-2 human cell line. This antibody reacts specifically with the ~ 22-24 kDa endogenous Claudin-5 protein. Excitation/Peak Emission (nm): 495/519

Product Images For Claudin 5 Monoclonal Antibody (4C3C2), Alexa Fluor 488



Claudin 5 Antibody (352588) in IF

Immunofluorescent staining of Claudin-5 in human Caco-2 cells using mouse monoclonal antibody - Alexa Fluor® 488 (Product # 352588). DNA is counter stained with blue Hoechst 33258 (Product # H3569).

[View more figures on thermofisher.com](https://www.thermofisher.com)

Immunohistochemistry (16)

eLife

Beta-catenin signaling regulates barrier-specific gene expression in circumventricular organ and ocular vasculatures.

"352588 was used in Immunohistochemistry to study beta-catenin signalling in endothelial cells in high permeability vascular systems compared to barrier-competent endothelial cells."

Authors: Wang Y,Sabbagh MF,Gu X,Rattner A,Williams J,Nathans J

Species
Mouse

Dilution
Not Cited

Year
2019

JCI insight

Blood-retina barrier failure and vision loss in neuron-specific degeneration.

"352588 was used in Immunohistochemistry-immunofluorescence to study how changing neuronal activity prevalent at the onset of neurodegenerative disease affects neurovascular elements."

Authors: Ivanova E,Alam NM,Prusky GT,Sagdullaev BT

Species
Mouse

Dilution
1:10,000

Year
2019

[View more IHC references on thermofisher.com](#)

Immunofluorescence (11)

JCI insight

Blood-retina barrier failure and vision loss in neuron-specific degeneration.

"352588 was used in Immunohistochemistry-immunofluorescence to study how changing neuronal activity prevalent at the onset of neurodegenerative disease affects neurovascular elements."

Authors: Ivanova E,Alam NM,Prusky GT,Sagdullaev BT

Species
Mouse

Dilution
1:10,000

Year
2019

Proceedings of the National Academy of Sciences of the United States of America

Interplay of the Norrin and Wnt7a/Wnt7b signaling systems in blood-brain barrier and blood-retina barrier development and maintenance.

"352588 was used in Immunohistochemistry-immunofluorescence to define the extent of CNS region-specific cooperation for several components of the Norrin and Wnt7a/Wnt7b systems."

Authors: Wang Y,Cho C,Williams J,Smallwood PM,Zhang C,Junge HJ,Nathans J

Species
Mouse

Dilution
Not Cited

Year
2018

[View more IF references on thermofisher.com](#)

More applications with references on thermofisher.com

[WB \(3\)](#) [IHC \(Free\) \(1\)](#) [IHC \(F\) \(2\)](#) [ICC \(2\)](#) [Misc \(2\)](#)

For Research Use Only. Not for use in diagnostic procedures. Not for resale without express authorization. Products are warranted to operate or perform substantially in conformance with published Product specifications in effect at the time of sale, as set forth in the Production documentation, specifications and/or accompanying package inserts ("Documentation"). No claim of suitability for use in applications regulated by FDA is made. The warranty provided herein is valid only when used by properly trained individuals. Unless otherwise stated in the Documentation, this warranty is limited to one year from date of shipment when the Product is subjected to normal, proper and intended usage. This warranty does not extend to anyone other than the Buyer. Any model or sample furnished to Buyer is merely illustrative of the general type and quality of goods and does not represent that any Product will conform to such model or sample. NO OTHER WARRANTIES, EXPRESS OR IMPLIED, ARE GRANTED INCLUDING WITHOUT LIMITATION, IMPLIED WARRANTIES OF MERCHANTABILITY, FITNESS FOR ANY PARTICULAR PURPOSE, OR NON INFRINGEMENT. BUYER'S EXCLUSIVE REMEDY FOR NON-CONFORMING PRODUCTS DURING THE WARRANTY PERIOD IS LIMITED TO REPAIR, REPLACEMENT OF OR REFUND FOR THE NON-CONFORMING PRODUCT(S) AT SELLER'S SOLE OPTION. THERE IS NO OBLIGATION TO REPAIR, REPLACE OR REFUND FOR PRODUCTS AS THE RESULT OF (I) ACCIDENT, DISASTER OR EVENT OF FORCE MAJEURE, (II) MISUSE, FAULT OR NEGLIGENCE OF OR BY BUYER, (III) USE OF THE PRODUCTS IN A MANNER FOR WHICH THEY WERE NOT DESIGNED, OR (IV) IMPROPER STORAGE AND HANDLING OF THE PRODUCTS. Unless otherwise expressly stated on the Product or in the documentation accompanying the Product, the Product is intended for research only and is not to be used for any other purpose, including without limitation, unauthorized commercial uses, in vitro diagnostic uses, ex vivo or in vivo therapeutic uses, or any type of consumption by or application to human or animals.