

Claudin 4 Polyclonal Antibody (ZMD.306)

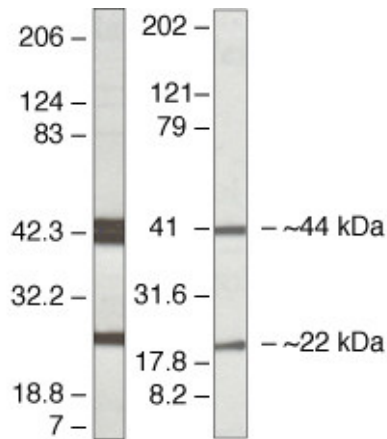
Product Details	
Size	100 µg
Species Reactivity	Mouse, Rat
Published Species	Dog, Pig, Rat, Non-human primate, Hamster, Sheep, Plant, Human, Mouse
Host/Isotype	Rabbit / IgG
Class	Polyclonal
Type	Antibody
Clone	ZMD.306
Conjugate	Unconjugated
Immunogen	Synthetic peptide derived from the C-terminal region of mouse Claudin-4
Form	Liquid
Concentration	0.25 mg/mL
Purification	Antigen affinity chromatography
Storage buffer	PBS, pH 7.4
Contains	0.1% sodium azide
Storage conditions	-20°C
RRID	AB_2533262

Applications	Tested Dilution	Publications
Western Blot (WB)	1-3 µg/mL	33 Publications
Immunohistochemistry (IHC)	-	29 Publications
Immunohistochemistry (Paraffin) (IHC (P))	-	4 Publications
Immunohistochemistry (Frozen) (IHC (F))	-	5 Publications
Immunocytochemistry (ICC/IF)	Assay-dependent	20 Publications
Flow Cytometry (Flow)	-	2 Publications
ELISA (ELISA)	0.1-1 µg/mL	-
Immunoprecipitation (IP)	1-3 µg/mL	-
Miscellaneous PubMed (Misc)	-	5 Publications

Product Specific Information

Reactivity has been confirmed with mouse and rat kidney homogenates. On western blots a 22 kDa band is observed and a 44 kDa band representing dimerized protein may be observed.

Product Images For Claudin 4 Polyclonal Antibody (ZMD.306)



Claudin 4 Antibody (36-4800) in WB
Western blot analysis of (left) mouse and (right) rat kidney homogenates using Rabbit anti-Claudin-4 Polyclonal Antibody (Product # 36-4800).

Western blot analysis of (left) mouse and (right) rat kidney homogenates using Rb anti-Claudin-4 (Cat. no. 36-4800).

[View more figures on thermofisher.com](https://www.thermofisher.com)

Western Blot (33)

<p>iScience</p> <p>The global Protein-RNA interaction map of ESRP1 defines a post-transcriptional program that is essential for epithelial cell function.</p> <p>"Published figure using Claudin 4 polyclonal antibody (Product # 36-4800) in Western Blot"</p> <p>Authors: Peart NJ,Hwang JY,Quesnel-Vallières M,Sears MJ,Yang Y,Stoilov P,Barash Y,Park JW,Lynch KW,Carstens RP</p>	<p>Year 2022</p>
<p>Microbiome</p> <p>Lactic acid from vaginal microbiota enhances cervicovaginal epithelial barrier integrity by promoting tight junction protein expression.</p> <p>"Published figure using Claudin 4 polyclonal antibody (Product # 36-4800) in Western Blot"</p> <p>Authors: Delgado-Diaz DJ,Jesaveluk B,Hayward JA,Tyssen D,Alisoltani A,Potgieter M,Bell L,Ross E,Iranzadeh A,Allali I,Dabee S,Barnabas S,Gamieldeen H,Blackburn JM,Mulder N,Smith SB,Edwards VL,Burgener AD,Bekker LG,Ravel J,Passmore JS,Masson L,Hearps AC,Tachedjian G</p>	<p>Year 2022</p>

[View more WB references on thermofisher.com](#)

Immunohistochemistry (29)

<p>The EMBO journal</p> <p>Airway secretory cell fate conversion via YAP-mTORC1-dependent essential amino acid metabolism.</p> <p>"Published figure using Claudin 4 polyclonal antibody (Product # 36-4800) in Immunohistochemistry"</p> <p>Authors: Jeon HY,Choi J,Kraaier L,Kim YH,Eisenbarth D,Yi K,Kang JG,Kim JW,Shim HS,Lee JH,Lim DS</p>	<p>Year 2022</p>
<p>Cellular and molecular gastroenterology and hepatology</p> <p>A Novel Microphysiological Colon Platform to Decipher Mechanisms Driving Human Intestinal Permeability.</p> <p>"Published figure using Claudin 4 polyclonal antibody (Product # 36-4800) in Immunocytochemistry"</p> <p>Authors: Apostolou A,Panchakshari RA,Banerjee A,Manatakis DV,Paraskevopoulou MD,Luc R,Abu-Ali G,Dimitriou A,Lucchesi C,Kulkarni G,Maulana TI,Kasendra M,Kerns JS,Bleck B,Ewart L,Manolagos ES,Hamilton GA,Giallourakis C,Karalis K</p>	<p>Year 2022</p>

[View more IHC references on thermofisher.com](#)

More applications with references on thermofisher.com

- IHC (P) (4)
- IHC (F) (5)
- ICC/IF (20)
- Flow (2)
- Misc (5)

For Research Use Only. Not for use in diagnostic procedures. Not for resale without express authorization. Products are warranted to operate or perform substantially in conformance with published Product specifications in effect at the time of sale, as set forth in the Production documentation, specifications and/or accompanying package inserts ("Documentation"). No claim of suitability for use in applications regulated by FDA is made. The warranty provided herein is valid only when used by properly trained individuals. Unless otherwise stated in the Documentation, this warranty is limited to one year from date of shipment when the Product is subjected to normal, proper and intended usage. This warranty does not extend to anyone other than the Buyer. Any model or sample furnished to Buyer is merely illustrative of the general type and quality of goods and does not represent that any Product will conform to such model or sample. NO OTHER WARRANTIES, EXPRESS OR IMPLIED, ARE GRANTED INCLUDING WITHOUT LIMITATION, IMPLIED WARRANTIES OF MERCHANTABILITY, FITNESS FOR ANY PARTICULAR PURPOSE, OR NON-INFRINGEMENT. BUYER'S EXCLUSIVE REMEDY FOR NON-CONFORMING PRODUCTS DURING THE WARRANTY PERIOD IS LIMITED TO REPAIR, REPLACEMENT OF OR REFUND FOR THE NON-CONFORMING PRODUCT(S) AT SELLER'S SOLE OPTION. THERE IS NO OBLIGATION TO REPAIR, REPLACE OR REFUND FOR PRODUCTS AS THE RESULT OF (i) ACCIDENT, DISASTER OR EVENT OF FORCE MAJEURE, (ii) MISUSE, FAULT OR NEGLIGENCE OF OR BY BUYER, (iii) USE OF THE PRODUCTS IN A MANNER FOR WHICH THEY WERE NOT DESIGNED, OR (iv) IMPROPER STORAGE AND HANDLING OF THE PRODUCTS. Unless otherwise expressly stated on the Product or in the documentation accompanying the Product, the Product is intended for research only and is not to be used for any other purpose, including without limitation, unauthorized commercial uses, in vitro diagnostic uses, ex vivo or in vivo therapeutic uses, or any type of consumption by or application to human or animals.