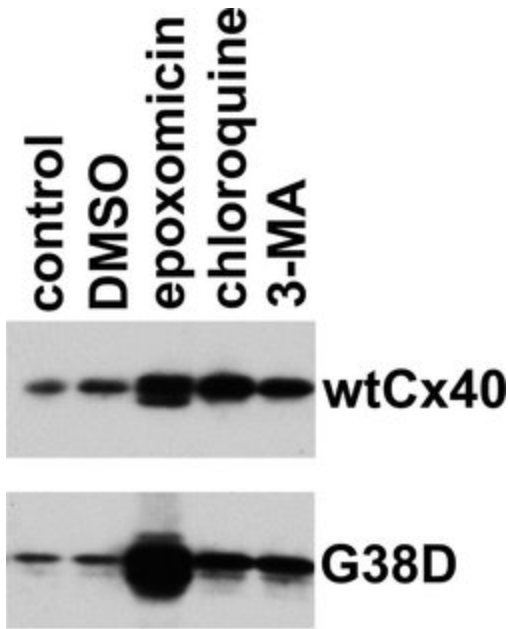


Connexin 40 Polyclonal Antibody

Product Details	
Size	100 µg
Species Reactivity	Human, Mouse, Rat
Published Species	Dog, Rat, Mouse, Human
Host/Isotype	Rabbit / IgG
Class	Polyclonal
Type	Antibody
Conjugate	Unconjugated
Immunogen	Synthetic peptide derived from the C-terminal region of the mouse and rat Connexin 40 (Cx40) proteins. The human sequence at this location differs by only one amino acid.
Form	Liquid
Concentration	0.25 mg/mL
Purification	Antigen affinity chromatography
Storage buffer	PBS, pH 7.4
Contains	0.1% sodium azide
Storage conditions	-20°C
RRID	AB_2533263

Applications	Tested Dilution	Publications
Western Blot (WB)	Assay-dependent	12 Publications
Immunohistochemistry (IHC)	-	7 Publications
Immunohistochemistry (Paraffin) (IHC (P))	1:10-1:50	-
Immunohistochemistry (Frozen) (IHC (F))	1:10-1:50	1 Publication
Immunocytochemistry (ICC/IF)	-	6 Publications
Immunoprecipitation (IP)	Assay-dependent	-

Advanced Verification Data

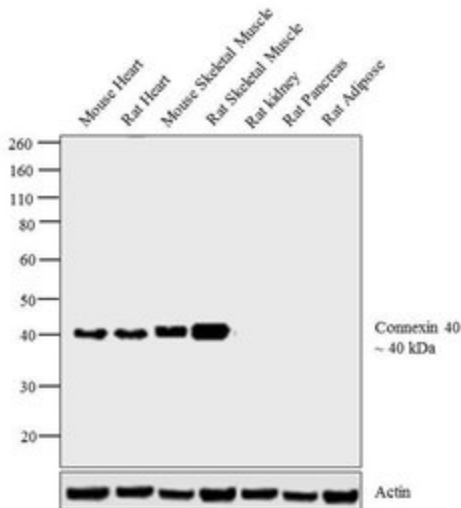


Connexin 40 Antibody (36-4900)

Figure 4 The proteasomal inhibitor, epoxomicin, blocks the accelerated degradation of G38D HeLa cells were transiently transfected with wtCx40 or G38D, and 48 h later were treated for 18 hours with chloroquine (to inhibit the lysosome), 3-methyl adenine (3-MA; to inhibit autophagy) or epoxomicin (to block the proteasome). The cells were harvested and analyzed by immunoblotting to determine levels of immunoreactive Cx40. Although each of the drugs produced an increase in both wtCx40 and G38D, the relative increase for G38D was much greater following epoxomicin, implicating the proteasome in the accelerated degradation of this mutant. Cell treatment validation info.

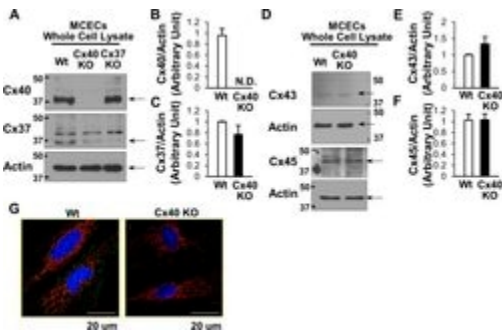
Connexin 40 Antibody (36-4900)

Antibody specificity was demonstrated by detection of differential basal expression of the target across tissue models owing to their inherent genetic constitution. Relative expression of Connexin 40 was observed in Mouse Heart, Rat Heart, Mouse Skeletal Muscle, Rat Skeletal Muscle, Rat Kidney, Rat Pancreas and Rat Adipose in Western Blot using Connexin 40 Polyclonal Antibody (Product # 36-4900). Connexin 40 is reported to be expressed in heart and skeletal muscle tissue and not in other tissues like kidney, pancreas and adipose. Relative expression validation info.



Connexin 40 Antibody (36-4900)

Protein levels of Cx40, Cx37, Cx43, and Cx45 in MCECs. A and D: typical WB images of Cx40, Cx37, Cx43, and Cx45 protein levels in the whole lysate of MCECs isolated from WT, Cx40 KO, and Cx37 KO mice. Actin was used as a loading control for samples of whole lysate from MCECs. B: Cx40 protein level normalized to actin: WT (n = 5) and Cx40 KO (n = 5). Data are means \pm SE. C: Cx37 protein levels in MCECs of WT and Cx40 KO mice (n = 4 in each group). Data are means \pm SE. E: Cx43 protein levels in MCECs of WT and Cx40 KO mice (n = 5 in each group). Data are means \pm SE. F: Cx45 protein levels in MCECs of WT and Cx40 KO mice (n = 6 in each group). Data are means \pm SE. G: photomicrographs show typical image of Cx40 expression in WT MCECs (left) and Cx40 KO MCECs (right). MCECs were stained with Cx40 (green) and Tom20 (a marker of mitochondria; red). Knockdown validation info.



26 References

Western Blot (12)

Cardiovascular research

Role of atrial arrhythmia and ventricular response in atrial fibrillation induced atrial remodelling.

"36-4900 was used in Western Blotting to assess the roles of atrial arrhythmia versus high ventricular rate in AF-associated remodeling."

Authors: Guichard JB,Xiong F,Qi XY,L'Heureux N,Hiram R,Xiao J,Naud P,Tardif JC,Da Costa A,Nattel S

Species
Dog

Dilution
Not Cited

Year
2021

Scientific reports

Vascular endothelial growth factor promotes atrial arrhythmias by inducing acute intercalated disk remodeling.

"36-4900 was used in Western Blotting to show VEGF can slow atrial conduction and predispose normal hearts to atrial arrhythmias."

Authors: Mezache L,Struckman HL,Greer-Short A,Baine S,Györke S,Radwaski PB,Hund TJ,Veeraraghavan R

Species
Mouse

Dilution
Not Cited

Year
2020

[View more WB references on thermofisher.com](#)

Immunohistochemistry (7)

The Journal of biological chemistry

Importance of endothelial Hey1 expression for thoracic great vessel development and its distal enhancer for Notch-dependent endothelial transcription.

"Published figure using Connexin 40 polyclonal antibody (Product # 36-4900) in Immunohistochemistry"

Authors: Watanabe Y,Seya D,Ihara D,Ishii S,Uemoto T,Kubo A,Arai Y,Isomoto Y,Nakano A,Abe T,Shigeta M,Kawamura T,Saito Y,Ogura T,Nakagawa O

Species
Not Applicable

Dilution
Not Cited

Year
2020

Human molecular genetics

Systemic therapy in an RNA toxicity mouse model with an antisense oligonucleotide therapy targeting a non-CUG sequence within the DMPK 3'UTR RNA.

"36-4900 was used in Immunohistochemistry-immunofluorescence to demonstrate systemic treatment with an antisense oligonucleotide (ASO) (ISIS 486178) targeted to a non-CUG sequence within the 3'UTR of dystrophin myotonic protein kinase."

Authors: Yadava RS,Yu Q,Mandal M,Rigo F,Bennett CF,Mahadevan MS

Species
Mouse

Dilution
1:100

Year
2020

[View more IHC references on thermofisher.com](#)

More applications with references on thermofisher.com

IHC (F) (1)

ICC/IF (6)

For Research Use Only. Not for use in diagnostic procedures. Not for resale without express authorization. Products are warranted to operate or perform substantially in conformance with published Product specifications in effect at the time of sale, as set forth in the Production documentation, specifications and/or accompanying package inserts ("Documentation"). No claim of suitability for use in applications regulated by FDA is made. The warranty provided herein is valid only when used by properly trained individuals. Unless otherwise stated in the Documentation, this warranty is limited to one year from date of shipment when the Product is subjected to normal, proper and intended usage. This warranty does not extend to anyone other than the Buyer. Any model or sample furnished to Buyer is merely illustrative of the general type and quality of goods and does not represent that any Product will conform to such model or sample. NO OTHER WARRANTIES, EXPRESS OR IMPLIED, ARE GRANTED INCLUDING WITHOUT LIMITATION, IMPLIED WARRANTIES OF MERCHANTABILITY, FITNESS FOR ANY PARTICULAR PURPOSE, OR NON INFRINGEMENT. BUYER'S EXCLUSIVE REMEDY FOR NON-CONFORMING PRODUCTS DURING THE WARRANTY PERIOD IS LIMITED TO REPAIR, REPLACEMENT OF OR REFUND FOR THE NON-CONFORMING PRODUCT(S) AT SELLER'S SOLE OPTION. THERE IS NO OBLIGATION TO REPAIR, REPLACE OR REFUND FOR PRODUCTS AS THE RESULT OF (I) ACCIDENT, DISASTER OR EVENT OF FORCE MAJEURE, (II) MISUSE, FAULT OR NEGLIGENCE OF OR BY BUYER, (III) USE OF THE PRODUCTS IN A MANNER FOR WHICH THEY WERE NOT DESIGNED, OR (IV) IMPROPER STORAGE AND HANDLING OF THE PRODUCTS. Unless otherwise expressly stated on the Product or in the documentation accompanying the Product, the Product is intended for research only and is not to be used for any other purpose, including without limitation, unauthorized commercial uses, in vitro diagnostic uses, ex vivo or in vivo therapeutic uses, or any type of consumption by or application to human or animals.