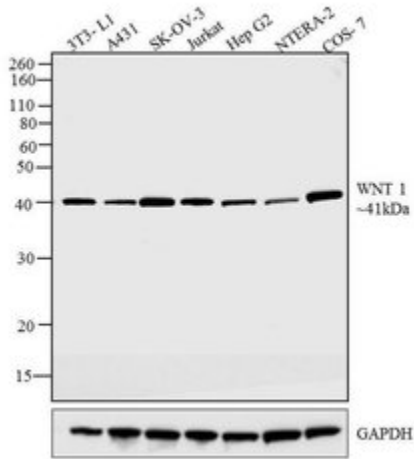


WNT1 Polyclonal Antibody

Product Details	
Size	100 µg
Species Reactivity	Human, Mouse, Rhesus monkey
Published Species	Mouse, Human
Host/Isotype	Rabbit / IgG
Class	Polyclonal
Type	Antibody
Conjugate	Unconjugated
Immunogen	Synthetic peptide derived from the C-terminal region of the human WNT1 protein.
Form	Liquid
Concentration	0.25 mg/mL
Purification	Antigen affinity chromatography
Storage buffer	PBS, pH 7.4
Contains	0.1% sodium azide
Storage conditions	-20°C
RRID	AB_2533269

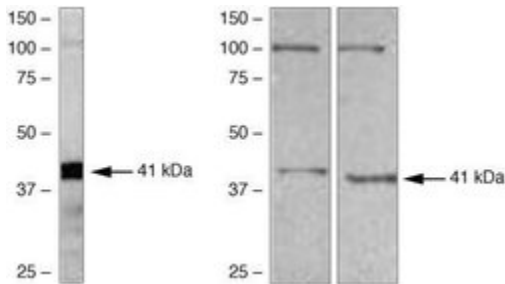
Applications	Tested Dilution	Publications
Western Blot (WB)	Assay-dependent	4 Publications
Immunocytochemistry (ICC/IF)	-	1 Publication
Immunoprecipitation (IP)	Assay-dependent	1 Publication

Product Images For WNT1 Polyclonal Antibody



WNT1 Antibody (36-5800) in WB

Western blot analysis was performed on whole cell extracts (30 µg lysate) of 3T3-L1 (Lane 1), A431 (Lane 2), SK-OV-3 (Lane 3), Jurkat (Lane 4), Hep G2 (Lane 5), NTERA-2 (Lane 6) and COS-7 (Lane 7). The blots were probed with Anti-WNT1 Rabbit Polyclonal Antibody (Product # 36-5800, 1-3 µg/mL) and detected by chemiluminescence Goat Anti-Rabbit IgG Secondary Antibody, HRP conjugate (Product # G-21234, 1:5000 dilution). A 41 kDa band corresponding to WNT1 was observed across cell lines tested. Known quantity of protein samples were electrophoresed using Novex® NuPAGE® 12 % Bis-Tris gel (Product # NP0342BOX), XCell SureLock™ Electrophoresis System (Product # EI0002) and Novex® Sharp Pre-Stained Protein Standard (Product # LC5800). Resolved proteins were then transferred onto a nitrocellulose membrane by iBlot® 2 Dry Blotting System (Product # IB21001). The membrane was probed with the relevant primary and secondary Antibody following blocking with 5 % skimmed milk. Chemiluminescent detection was performed using Pierce™ ECL Western Blotting Substrate (Product # 32106).



WNT1 Antibody (36-5800) in WB

Western blot analysis of (A) WNT1-transfected HEK293, (B) MS-1, and (C) GIST882 cell lysates using Rb anti-WNT1 (Product # 36-5800).

View more figures on [thermofisher.com](https://www.thermofisher.com)

6 References

Western Blot (4)

Kidney international

The loss of Krüppel-like factor 15 in Foxd1⁺ stromal cells exacerbates kidney fibrosis.

"36-5800 was used in Western Blotting to study whether Klf15 mRNA and protein expression are reduced in late stages of fibrosis in a mouse model of progressive renal fibrosis."

Authors: Gu X, Mallipattu SK, Guo Y, Revelo MP, Pace J, Miller T, Gao X, Jain MK, Bialkowska AB, Yang VW, He JC, Mei C

Species
Mouse

Dilution
Not Cited

Year
2017

Scientific reports

miR-148a is Associated with Obesity and Modulates Adipocyte Differentiation of Mesenchymal Stem Cells through Wnt Signaling.

"36-5800 was used in western blot to study the association with adipocyte differentiation of mesenchymal stem cells and obesity through Wnt signaling and miR-148a"

Authors: Shi C, Zhang M, Tong M, Yang L, Pang L, Chen L, Xu G, Chi X, Hong Q, Ni Y, Ji C, Guo X

Species
Human

Dilution
Not Cited

Year
2015

[View more WB references on thermofisher.com](#)

Immunocytochemistry (1)

The EMBO journal

Axin is a scaffold protein in TGF-beta signaling that promotes degradation of Smad7 by Arkadia.

Authors: Liu W, Rui H, Wang J, Lin S, He Y, Chen M, Li Q, Ye Z, Zhang S, Chan SC, Chen YG, Han J, Lin SC

Species
Human

Dilution
Not Cited

Year
2006

Immunoprecipitation (1)

The EMBO journal

Axin is a scaffold protein in TGF-beta signaling that promotes degradation of Smad7 by Arkadia.

Authors: Liu W, Rui H, Wang J, Lin S, He Y, Chen M, Li Q, Ye Z, Zhang S, Chan SC, Chen YG, Han J, Lin SC

Species
Human

Dilution
Not Cited

Year
2006

More applications with references on thermofisher.com

For Research Use Only. Not for use in diagnostic procedures. Not for resale without express authorization. Products are warranted to operate or perform substantially in conformance with published Product specifications in effect at the time of sale, as set forth in the Production documentation, specifications and/or accompanying package inserts ("Documentation"). No claim of suitability for use in applications regulated by FDA is made. The warranty provided herein is valid only when used by properly trained individuals. Unless otherwise stated in the Documentation, this warranty is limited to one year from date of shipment when the Product is subjected to normal, proper and intended usage. This warranty does not extend to anyone other than the Buyer. Any model or sample furnished to Buyer is merely illustrative of the general type and quality of goods and does not represent that any Product will conform to such model or sample. NO OTHER WARRANTIES, EXPRESS OR IMPLIED, ARE GRANTED INCLUDING WITHOUT LIMITATION, IMPLIED WARRANTIES OF MERCHANTABILITY, FITNESS FOR ANY PARTICULAR PURPOSE, OR NON-INFRINGEMENT. BUYER'S EXCLUSIVE REMEDY FOR NON-CONFORMING PRODUCTS DURING THE WARRANTY PERIOD IS LIMITED TO REPAIR, REPLACEMENT OF OR REFUND FOR THE NON-CONFORMING PRODUCT(S) AT SELLER'S SOLE OPTION. THERE IS NO OBLIGATION TO REPAIR, REPLACE OR REFUND FOR PRODUCTS AS THE RESULT OF (I) ACCIDENT, DISASTER OR EVENT OF FORCE MAJEURE, (II) MISUSE, FAULT OR NEGLIGENCE OF OR BY BUYER, (III) USE OF THE PRODUCTS IN A MANNER FOR WHICH THEY WERE NOT DESIGNED, OR (IV) IMPROPER STORAGE AND HANDLING OF THE PRODUCTS. Unless otherwise expressly stated on the Product or in the documentation accompanying the Product, the Product is intended for research only and is not to be used for any other purpose, including without limitation, unauthorized commercial uses, in vitro diagnostic uses, ex vivo or in vivo therapeutic uses, or any type of consumption by or application to human or animals.