

EZH2 Polyclonal Antibody

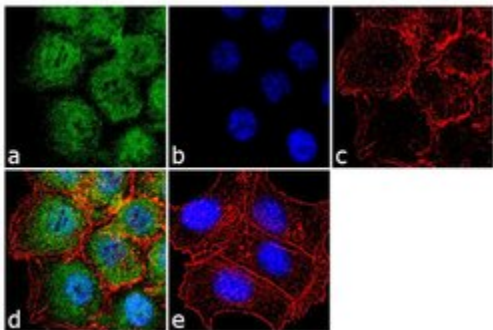
Product Details	
Size	100 µg
Species	Human, Mouse
Published Species	Tag, Human, Mouse
Expression System	Rabbit / IgG
Class	Polyclonal
Type	Antibody
Conjugate	Unconjugated
Immunogen	Synthetic peptide derived from the internal region of the human EZH2 (ENX1) protein.
Form	Liquid
Concentration	0.25 mg/mL
Purification	Antigen affinity chromatography
Storage buffer	PBS, pH 7.4
Contains	0.1% sodium azide
Storage Conditions	-20°C
RRID	AB_2533271

Applications	Tested Dilution	Publications
ELISA (ELISA)	Assay Dependent	-
Immunocytochemistry (ICC)	2 µg/mL	1 Publication
Immunofluorescence (IF)	2 µg/mL	2 Publications
Immunohistochemistry (Paraffin) (IHC (P))	1:20	2 Publications
Western Blot (WB)	Assay Dependent	6 Publications
ChIP assay (ChIP)	-	4 Publications
Immunohistochemistry (IHC)	-	5 Publications
Immunoprecipitation (IP)	-	1 Publication

Product Images For EZH2 Polyclonal Antibody

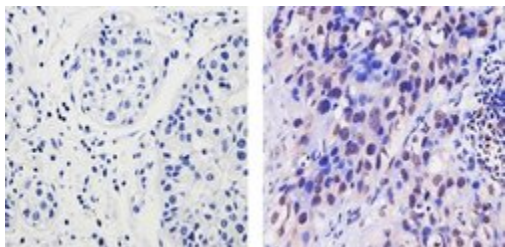
EZH2 Antibody (36-6300) in IF

Immunofluorescence analysis of EZH2 was performed using 70% confluent log phase HCT 116 cells. The cells were fixed with 4% paraformaldehyde for 10 minutes, permeabilized with 0.1% Triton™ X-100 for 10 minutes, and blocked with 1% BSA for 1 hour at room temperature. The cells were labeled with EZH2 Rabbit Polyclonal Antibody (Product # 36-6300) at 2 µg/mL in 0.1% BSA and incubated for 3 hours at room temperature and then labeled with Goat anti-Rabbit IgG (H+L) Superclonal™ Secondary Antibody, Alexa Fluor® 488 conjugate (Product # A27034) at a dilution of 1:2000 for 45 minutes at room temperature (Panel a: green). Nuclei (Panel b: blue) were stained with SlowFade® Gold Antifade Mountant with DAPI (Product # S36938). F-actin (Panel c: red) was stained with Alexa Fluor® 555 Rhodamine Phalloidin (Product # R415, 1:300). Panel d represents the merged image showing cytoplasmic and nuclear localization. Panel e shows the no primary antibody control. The images were captured at 60X magnification.



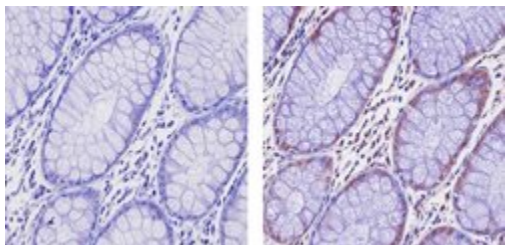
EZH2 Antibody (36-6300) in IHC (P)

Immunohistochemistry analysis of EZH2 showing staining in the nucleus and weak staining in the cytoplasm of paraffin-embedded human breast carcinoma (right) compared to a negative control without primary antibody (left). To expose target proteins, antigen retrieval was performed using 10mM sodium citrate (pH 6.0), microwaved for 8-15 min. Following antigen retrieval, tissues were blocked in 3% H2O2-methanol for 15 min at room temperature, washed with ddH2O and PBS, and then probed with a EZH2 Rabbit Polyclonal Antibody (Product # 36-6300) diluted in 3% BSA-PBS at a dilution of 1:20 for 1 hour at 37°C in a humidified chamber. Tissues were washed extensively in PBST and detection was performed using an HRP-conjugated secondary antibody followed by colorimetric detection using a DAB kit. Tissues were counterstained with hematoxylin and dehydrated with ethanol and xylene to prep for mounting.



EZH2 Antibody (36-6300) in IHC (P)

Immunohistochemistry analysis of EZH2 showing staining in the nucleus and weak staining in the cytoplasm of paraffin-embedded human colon carcinoma (right) compared to a negative control without primary antibody (left). To expose target proteins, antigen retrieval was performed using 10mM sodium citrate (pH 6.0), microwaved for 8-15 min. Following antigen retrieval, tissues were blocked in 3% H2O2-methanol for 15 min at room temperature, washed with ddH2O and PBS, and then probed with a EZH2 Rabbit Polyclonal Antibody (Product # 36-6300) diluted in 3% BSA-PBS at a dilution of 1:20 for 1 hour at 37°C in a humidified chamber. Tissues were washed extensively in PBST and detection was performed using an HRP-conjugated secondary antibody followed by colorimetric detection using a DAB kit. Tissues were counterstained with hematoxylin and dehydrated with ethanol and xylene to prep for mounting.



[View more figures on thermofisher.com](https://www.thermofisher.com)

21 References

Western Blot (6)

Oncotarget

The microRNA signature of patients with sunitinib failure: regulation of UHRF1 pathways by microRNA-101 in renal cell carcinoma.

"366300 was used in immunohistochemistry and western blot to propose that miR-101- mediated UHRF1 pathways are altered by sunitinib treatment"

Authors: Goto Y, Kurozumi A, Nohata N, Kojima S, Matsushita R, Yoshino H, Yamazaki K, Ishida Y, Ichikawa T, Naya Y, Seki N

Species
Human

Dilution
1:250

Year
2016

Oncology reports

Ribavirin as a tri-targeted antitumor repositioned drug.

"36-6300 was used in western blot to investigate the therapeutic potential of ribavirin as a cancer drug"

Authors: De la Cruz-Hernandez E, Medina-Franco JL, Trujillo J, Chavez-Blanco A, Dominguez-Gomez G, Perez-Cardenas E, Gonzalez-Fierro A, Taja-Chayeb L, Dueñas-Gonzalez A

Species
Human

Dilution
1:1000

Year
2015

[View more WB references on thermofisher.com](#)

Immunofluorescence (2)

Development (Cambridge, England)

Repression of Igf1 expression by Ezh2 prevents basal cell differentiation in the developing lung.

"36-6300 was used in Immunohistochemistry-immunofluorescence to explore the role of the histone methyltransferase Ezh2 during lung lineage determination."

Authors: Galvis LA, Holik AZ, Short KM, Pasquet J, Lun AT, Blewitt ME, Smyth IM, Ritchie ME, Asselin-Labat ML

Species
Mouse

Dilution
1:250

Year
2015

The Journal of biological chemistry

MicroRNA-26a targets the histone methyltransferase Enhancer of Zeste homolog 2 during myogenesis.

Authors: Wong CF, Tellam RL

Species
Mouse

Dilution
Not Cited

Year
2008

More applications with references on thermofisher.com

IHC (5)

IHC (P) (2)

ChIP (4)

IP (1)

ICC (1)

For Research Use Only. Not for use in diagnostic procedures. Not for resale without express authorization. Products are warranted to operate or perform substantially in conformance with published Product specifications in effect at the time of sale, as set forth in the Production documentation, specifications and/or accompanying package inserts ("Documentation"). No claim of suitability for use in applications regulated by FDA is made. The warranty provided herein is valid only when used by properly trained individuals. Unless otherwise stated in the Documentation, this warranty is limited to one year from date of shipment when the Product is subjected to normal, proper and intended usage. This warranty does not extend to anyone other than the Buyer. Any model or sample furnished to Buyer is merely illustrative of the general type and quality of goods and does not represent that any Product will conform to such model or sample. NO OTHER WARRANTIES, EXPRESS OR IMPLIED, ARE GRANTED INCLUDING WITHOUT LIMITATION, IMPLIED WARRANTIES OF MERCHANTABILITY, FITNESS FOR ANY PARTICULAR PURPOSE, OR NON INFRINGEMENT. BUYER'S EXCLUSIVE REMEDY FOR NON-CONFORMING PRODUCTS DURING THE WARRANTY PERIOD IS LIMITED TO REPAIR, REPLACEMENT OF OR REFUND FOR THE NON-CONFORMING PRODUCT(S) AT SELLER'S SOLE OPTION. THERE IS NO OBLIGATION TO REPAIR, REPLACE OR REFUND FOR PRODUCTS AS THE RESULT OF (I) ACCIDENT, DISASTER OR EVENT OF FORCE MAJEURE, (II) MISUSE, FAULT OR NEGLIGENCE OF OR BY BUYER, (III) USE OF THE PRODUCTS IN A MANNER FOR WHICH THEY WERE NOT DESIGNED, OR (IV) IMPROPER STORAGE AND HANDLING OF THE PRODUCTS. Unless otherwise expressly stated on the Product or in the documentation accompanying the Product, the Product is intended for research only and is not to be used for any other purpose, including without limitation, unauthorized commercial uses, in vitro diagnostic uses, ex vivo or in vivo therapeutic uses, or any type of consumption by or application to human or animals.