

beta Amyloid Polyclonal Antibody

Product Details	
Size	100 µg
Species Reactivity	Human, Mouse
Published Species	Ferret, Mouse, Human
Host/Isotype	Rabbit / IgG
Class	Polyclonal
Type	Antibody
Conjugate	Unconjugated
Immunogen	Synthetic peptide derived from the C-terminal region of the human and mouse amyloid-beta precursor protein (APP695)
Form	Liquid
Concentration	0.25 mg/mL
Purification	Antigen affinity chromatography
Storage buffer	PBS, pH 7.4
Contains	0.1% sodium azide
Storage conditions	-20°C
RRID	AB_2533275

Applications	Tested Dilution	Publications
Western Blot (WB)	2 µg/mL	13 Publications
Immunohistochemistry (IHC)	Assay-dependent	6 Publications
Immunohistochemistry - Free Floating (IHC (Free))	-	1 Publication
Immunocytochemistry (ICC/IF)	2 µg/mL	2 Publications
ELISA (ELISA)	-	1 Publication
Immunoprecipitation (IP)	Assay-dependent	3 Publications

Product Specific Information

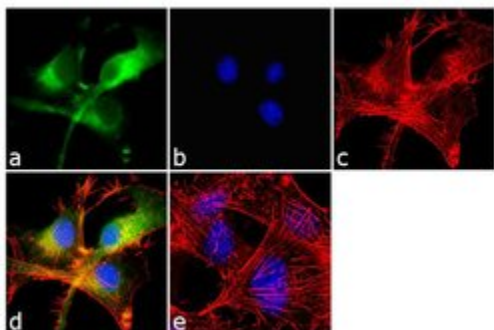
For immunohistochemistry in formalin-fixed, paraffin-embedded tissues, digestion with trypsin prior to staining is required.

Advanced Verification Data

Product Images For beta Amyloid Polyclonal Antibody

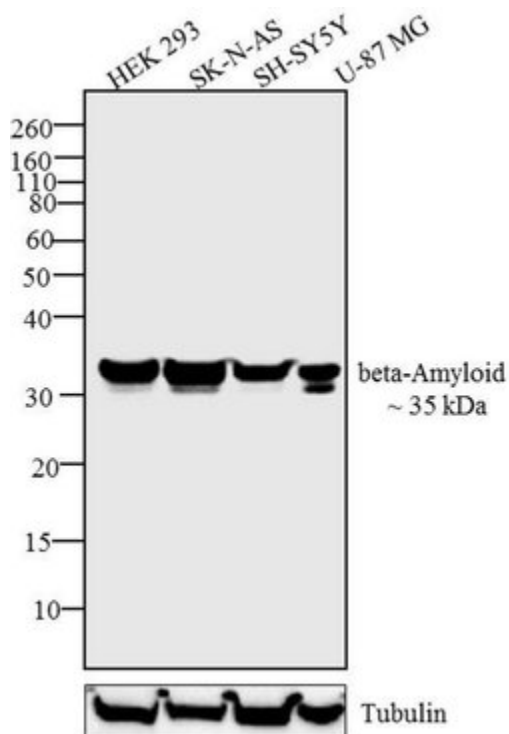
beta Amyloid Antibody (36-6900) in ICC/IF

Immunofluorescent analysis of beta-Amyloid was performed using 70% confluent log phase U-87 MG cells. The cells were fixed with 4% paraformaldehyde for 10 minutes, permeabilized with 0.1% Triton™ X-100 for 10 minutes, and blocked with 1% BSA for 1 hour at room temperature. The cells were labeled with beta-Amyloid Rabbit Polyclonal Antibody (Product # 36-6900) at 2 µg/mL in 0.1% BSA and incubated for 3 hours at room temperature and then labeled with Goat anti-Rabbit IgG (H+L) Superclonal™ Secondary Antibody, Alexa Fluor® 488 conjugate (Product # A27034) a dilution of 1:2000 for 45 minutes at room temperature (Panel a: green). Nuclei (Panel b: blue) were stained with SlowFade® Gold Antifade Mountant with DAPI (Product # S36938). F-actin (Panel c: red) was stained with Alexa Fluor® 555 Rhodamine Phalloidin (Product # R415, 1:300). Panel d represents the merged image showing cytoplasmic localization. Panel e shows the no primary antibody control. The images were captured at 60X magnification.



beta Amyloid Antibody (36-6900) in WB

Western blot analysis was performed on membrane enriched extract (30 µg) of HEK 293 (Lane 1), SK-N-AS (Lane 2), SH-SY5Y (Lane 3) and U-87 MG (Lane 4). The blots were probed with Anti-beta-Amyloid Rabbit Polyclonal Antibody (Product # 36-6900, 2 µg/mL) and detected by chemiluminescence using Goat anti-Rabbit IgG (H+L) Superclonal™ Secondary Antibody, HRP conjugate (Product # A27036, 0.4 µg/mL 1:2500 dilution). A ~ 35 kDa band corresponding to beta-Amyloid was observed across cell lines tested. Known quantity of protein samples were electrophoresed using Novex® NuPAGE®12 % Bis-Tris gel (Product # NP0342BOX), XCell SureLock™ Electrophoresis System (Product # EI0002) and Novex® Sharp Pre-Stained Protein Standard (Product # LC5800). Resolved proteins were then transferred onto a nitrocellulose membrane with Pierce™ Power Blotter System (22834). The membrane was probed with the relevant primary and secondary Antibody using iBind™ Flex Western Starter Kit (Product # SLF2000S). Chemiluminescent detection was performed using Pierce™ ECL Western Blotting Substrate (Product # 32106).



View more figures on thermofisher.com

Western Blot (13)

Biological procedures online

A Cautionary Tale: Endogenous Biotinylated Proteins and Exogenously-Introduced Protein A Cause Antibody-Independent Artefacts in Western Blot Studies of Brain-Derived Proteins.

"36-6900 was used in Western Blotting to study two examples of antibody-independent artefacts that have confounded the interpretation of results in the search for molecular entities associated with memory loss in Alzheimer's disease."

Authors: Grant MKO,Shapiro SL,Ashe KH,Liu P,Zahs KR

Species
Mouse

Dilution
Not Cited

Year
2020

Neurobiology of aging

Maturation of BRI2 generates a specific inhibitor that reduces APP processing at the plasma membrane and in endocytic vesicles.

"Published figure using beta Amyloid polyclonal antibody (Product # 36-6900) in Western Blot"

Authors: Matsuda S,Matsuda Y,Snapp EL,D'Adamo L

Species
Not Applicable

Dilution
Not Cited

Year
2011

[View more WB references on thermofisher.com](#)

Immunohistochemistry (6)

Fluids and barriers of the CNS

Nimodipine treatment does not benefit juvenile ferrets with kaolin-induced hydrocephalus.

"36-6900 was used in Immunohistochemistry to investigate whether treatment with nimodipine is beneficial to young ferrets with kaolin-induced hydrocephalus."

Authors: Di Curzio DL,Mao X,Baker A,Del Bigio MR

Species
Ferret

Dilution
1:3,000

Year
2018

The Journal of neuroscience : the official journal of the Society for Neuroscience

BRI2 inhibits amyloid beta-peptide precursor protein processing by interfering with the docking of secretases to the substrate.

"36-6900 was used in western blot to show that BRI2 is a suppressor of Abeta production"

Authors: Matsuda S,Giliberto L,Matsuda Y,McGowan EM,D'Adamo L

Species
Not Applicable

Dilution
Not Cited

Year
2008

[View more IHC references on thermofisher.com](#)

More applications with references on thermofisher.com

IHC (Free) (1)

ICC/IF (2)

ELISA (1)

IP (3)

For Research Use Only. Not for use in diagnostic procedures. Not for resale without express authorization. Products are warranted to operate or perform substantially in conformance with published Product specifications in effect at the time of sale, as set forth in the Production documentation, specifications and/or accompanying package inserts ("Documentation"). No claim of suitability for use in applications regulated by FDA is made. The warranty provided herein is valid only when used by properly trained individuals. Unless otherwise stated in the Documentation, this warranty is limited to one year from date of shipment when the Product is subjected to normal, proper and intended usage. This warranty does not extend to anyone other than the Buyer. Any model or sample furnished to Buyer is merely illustrative of the general type and quality of goods and does not represent that any Product will conform to such model or sample. NO OTHER WARRANTIES, EXPRESS OR IMPLIED, ARE GRANTED INCLUDING WITHOUT LIMITATION, IMPLIED WARRANTIES OF MERCHANTABILITY, FITNESS FOR ANY PARTICULAR PURPOSE, OR NON INFRINGEMENT. BUYER'S EXCLUSIVE REMEDY FOR NON-CONFORMING PRODUCTS DURING THE WARRANTY PERIOD IS LIMITED TO REPAIR, REPLACEMENT OF OR REFUND FOR THE NON-CONFORMING PRODUCT(S) AT SELLER'S SOLE OPTION. THERE IS NO OBLIGATION TO REPAIR, REPLACE OR REFUND FOR PRODUCTS AS THE RESULT OF (I) ACCIDENT, DISASTER OR EVENT OF FORCE MAJEURE, (II) MISUSE, FAULT OR NEGLIGENCE OF OR BY BUYER, (III) USE OF THE PRODUCTS IN A MANNER FOR WHICH THEY WERE NOT DESIGNED, OR (IV) IMPROPER STORAGE AND HANDLING OF THE PRODUCTS. Unless otherwise expressly stated on the Product or in the documentation accompanying the Product, the Product is intended for research only and is not to be used for any other purpose, including without limitation, unauthorized commercial uses, in vitro diagnostic uses, ex vivo or in vivo therapeutic uses, or any type of consumption by or application to human or animals.