

# Phospho-Tyrosine Hydroxylase (Ser31) Polyclonal Antibody

## Product Details

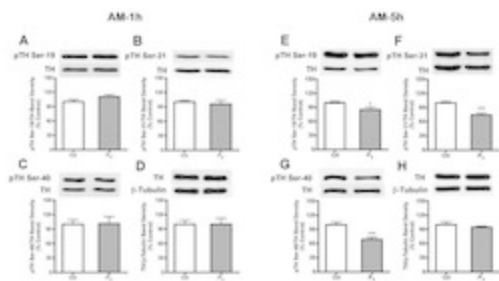
Size	100 µL
Species Reactivity	Rat
Published Species	Rat, Mouse
Host/Isotype	Rabbit / IgG
Class	Polyclonal
Type	Antibody
Conjugate	Unconjugated
Immunogen	Synthetic phospho peptide derived from a region of the rat tyrosine hydroxylase (TH) protein surrounding the phosphorylated Ser31 residue.
Form	Liquid
Purification	Affinity chromatography
Storage buffer	0.01M HEPES, pH 7.5, with 50% glycerol, 0.15M NaCl, 100µg/mL BSA
Contains	no preservative
Storage conditions	-20°C
RRID	AB_2533288

Applications	Tested Dilution	Publications
Western Blot (WB)	1:1,000	6 Publications
Immunohistochemistry (IHC)	1:1,000	-
Immunocytochemistry (ICC/IF)	1:1,000	-

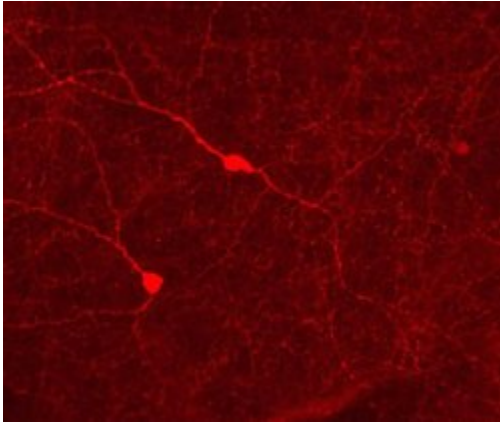
## Advanced Verification Data

### Phospho-Tyrosine Hydroxylase (Ser31) Antibody (36-9900)

FIG. 4 Phosphorylation state of TH at Ser-19, Ser-31 and Ser-40 within 1h (A-D) or 5h (E-H) after P 4 or oil treatment on proestrous morning. A representative immunoblot for each phosphorylation site of TH or TH protein is displayed on top of the bar graph. Similar to TH activity data, there were no differences in the phosphorylation state of TH at Ser-19, Ser-31 and Ser-40 within 1h after P 4 treatment at 0930h on proestrus. However, TH phosphorylation at Ser-19, Ser-31 and Ser-40 decreased by 14%, 26% and 31% at 5h later, respectively. Phospho-TH values were individually normalized to respective TH values. TH values were individually normalized to respective beta-tubulin values. Each value represents a mean +- SEM of determinations of seven to eight rats. \* p<0.05, \*\*\* p<0.001 vs. oil treatment. Cell treatment validation info.



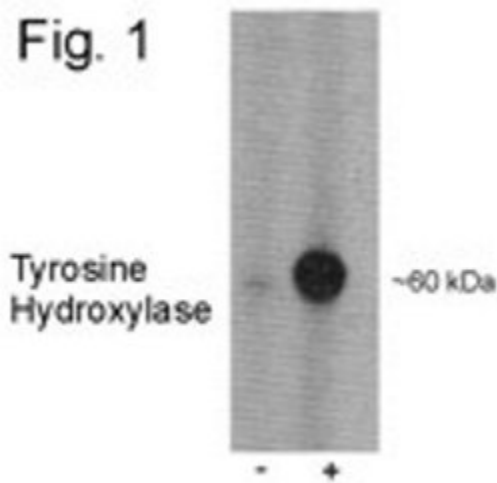
## Product Images For Phospho-Tyrosine Hydroxylase (Ser31) Polyclonal Antibody



### Phospho-Tyrosine Hydroxylase (Ser31) Antibody (36-9900) in ICC/IF

Indirect immunofluorescence staining of rat retinal dopaminergic neurons using Zymed Rb anti-phospho-Tyrosine Hydroxylase (Ser31) (Product # 36-9900). Image courtesy of Paul Witkovsky, PhD, Dept. of Ophthalmology, New York University School of Medicine.

Fig. 1



### Phospho-Tyrosine Hydroxylase (Ser31) Antibody (36-9900) in WB

Western blot analysis of Phospho-Tyrosine Hydroxylase pSer31 in PC-12 cells that had been incubated in the absence or presence of okadaic acid (1  $\mu$ M for 60 minutes) using a Phospho-Tyrosine Hydroxylase pSer31 polyclonal antibody (Product # 36-9900).

[View more figures on thermofisher.com](https://www.thermofisher.com)

### Western Blot (6)

#### Neuropharmacology

#### Docosahexaenoic acid protects motor function and increases dopamine synthesis in a rat model of Parkinson's disease via mechanisms associated with increased protein kinase activity in the striatum.

"36-9900 was used in Western Blotting to describe the neuroprotective effects of the omega-3 fatty acid docosahexaenoic acid (DHA) in the medial forebrain bundle 6-hydroxydopamine (6-OHDA) model of advanced-stage PD in rats."

Authors: Chitre NM, Wood BJ, Ray A, Moniri NH, Murnane KS

**Species**  
Rat

**Dilution**  
1:1000

**Year**  
2020

#### Hormones and behavior

#### Differential effects of mineralocorticoid and angiotensin II on incentive and mesolimbic activity.

"36-9900 was used in western blot to characterize the differential effects of angiotensin II and mineralocorticoid on incentive and mesolimbic activity"

Authors: Grafe LA, Flanagan-Cato LM

**Species**  
Not Applicable

**Dilution**  
1:400

**Year**  
2016

[View more WB references on thermofisher.com](#)

### More applications with references on thermofisher.com

For Research Use Only. Not for use in diagnostic procedures. Not for resale without express authorization. Products are warranted to operate or perform substantially in conformance with published Product specifications in effect at the time of sale, as set forth in the Production documentation, specifications and/or accompanying package inserts ("Documentation"). No claim of suitability for use in applications regulated by FDA is made. The warranty provided herein is valid only when used by properly trained individuals. Unless otherwise stated in the Documentation, this warranty is limited to one year from date of shipment when the Product is subjected to normal, proper and intended usage. This warranty does not extend to anyone other than the Buyer. Any model or sample furnished to Buyer is merely illustrative of the general type and quality of goods and does not represent that any Product will conform to such model or sample. NO OTHER WARRANTIES, EXPRESS OR IMPLIED, ARE GRANTED INCLUDING WITHOUT LIMITATION, IMPLIED WARRANTIES OF MERCHANTABILITY, FITNESS FOR ANY PARTICULAR PURPOSE, OR NON INFRINGEMENT. BUYER'S EXCLUSIVE REMEDY FOR NON-CONFORMING PRODUCTS DURING THE WARRANTY PERIOD IS LIMITED TO REPAIR, REPLACEMENT OF OR REFUND FOR THE NON-CONFORMING PRODUCT(S) AT SELLER'S SOLE OPTION. THERE IS NO OBLIGATION TO REPAIR, REPLACE OR REFUND FOR PRODUCTS AS THE RESULT OF (I) ACCIDENT, DISASTER OR EVENT OF FORCE MAJEURE, (II) MISUSE, FAULT OR NEGLIGENCE OF OR BY BUYER, (III) USE OF THE PRODUCTS IN A MANNER FOR WHICH THEY WERE NOT DESIGNED, OR (IV) IMPROPER STORAGE AND HANDLING OF THE PRODUCTS. Unless otherwise expressly stated on the Product or in the documentation accompanying the Product, the Product is intended for research only and is not to be used for any other purpose, including without limitation, unauthorized commercial uses, in vitro diagnostic uses, ex vivo or in vivo therapeutic uses, or any type of consumption by or application to human or animals.