

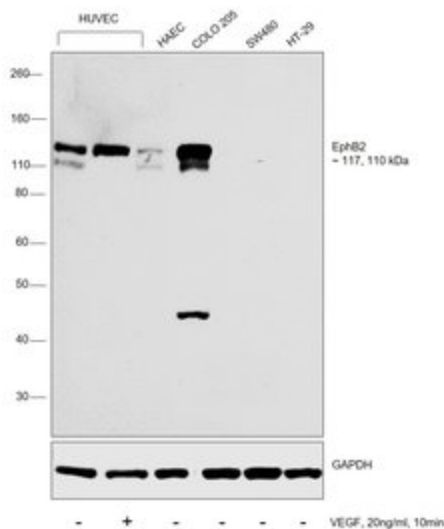
EphB2 Monoclonal Antibody (1A6C9)

Product Details	
Size	100 µg
Species	Chicken, Human
Published Species	Human, Mouse
Expression System	Mouse / IgG1, kappa
Class	Monoclonal
Type	Antibody
Clone	1A6C9
Conjugate	Unconjugated
Immunogen	A synthetic peptide derived from the C-terminal region of the recombinant EphB2 protein.
Form	Liquid
Concentration	0.5 mg/mL
Purification	Protein A
Storage buffer	PBS, pH 7.4
Contains	0.1% sodium azide
Storage Conditions	-20°C
RRID	AB_2533302

Applications	Tested Dilution	Publications
ELISA (ELISA)	Assay Dependent	-
Immunoprecipitation (IP)	Assay Dependent	3 Publications
Western Blot (WB)	1:500	5 Publications
Immunofluorescence (IF)	-	2 Publications
Miscellaneous PubMed (Misc)	-	2 Publications

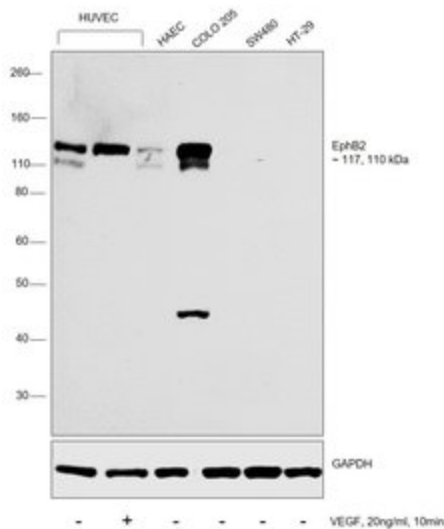
EphB2 Antibody (37-1700)

Altered expression of target protein upon cell treatment demonstrates antibody specificity. Western Blot analysis using Anti-EphB2 Monoclonal Antibody (1A6C9) (Product # 37-1700) shows increased expression of protein upon VEGF treatment in HUVEC. Cell treatment validation info.

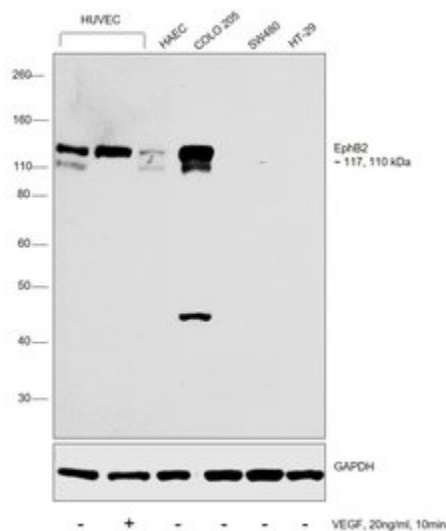


EphB2 Antibody (37-1700)

Antibody specificity was demonstrated by detection of differential basal expression of the target across tissues owing to their inherent genetic constitution. Relative expression of EphB2 was observed in COLO 205 in comparison to SW480 and HT-29 using EphB2 Monoclonal Antibody (1A6C9) (Product # 37-1700) in western blot. Relative expression validation info.

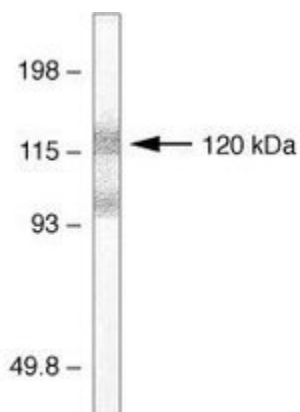


Product Images For EphB2 Monoclonal Antibody (1A6C9)



EphB2 Antibody (37-1700) in WB

Western blot was performed using Anti-EphB2 Monoclonal Antibody (1A6C9) (Product # 37-1700) and 117, 110kDa bands corresponding to EphB2 was increased upon VEGF treatment in HUVEC. Also, the expression was highest in COLO 205 in comparison to SW480 and HT-29 as reported. Membrane enriched cell extracts (30 ug lysate) of HUVEC (Lane 1), HUVEC treated with VEGF (20ng/ml, 10 min) (Lane 2), COLO 205 (Lane 3), SW480 (Lane 4) and HT-29 (Lane 5) were electrophoresed using Novex® NuPAGE® 4-12 % Bis-Tris gel (Product # NP0322BOX). Resolved proteins were then transferred onto a nitrocellulose membrane (Product # IB23001) by iBlot® 2 Dry Blotting System (Product # IB21001). The blot was probed with the primary antibody (1:500 dilution) and detected by chemiluminescence with Goat anti-Mouse IgG (H+L), Superclonal™ Recombinant Secondary Antibody, HRP (Product # A28177, 1:4000 dilution) using the iBright FL 1000 (Product # A32752). Chemiluminescent detection was performed using Novex® ECL Chemiluminescent Substrate Reagent Kit (Product # WP20005)..



EphB2 Antibody (37-1700) in WB

Western blot analysis of EphB2-transfected HEK293 cell lysates using mouse anti-EphB2 receptor monoclonal antibody (Product # 37-1700).

Western blot analysis of EphB2-transfected HEK293 cell lysates using Ms anti-EphB2 Receptor (Cat. no. 37-1700).

[View more figures on thermofisher.com](https://www.thermofisher.com)

12 References

Immunoprecipitation (3)

eLife

Receptor-specific interactome as a hub for rapid cue-induced selective translation in axons.

"Published figure using EphB2 monoclonal antibody (Product # 37-1700) in Immunoprecipitation"

Authors: Koppers M,Cagnetta R,Shigeoka T,Wunderlich LC,Vallejo-Ramirez P,Qiaojin Lin J,Zhao S,Jakobs MA,Dwivedy A,Minett MS,Bellon A,Kaminski CF,Harris WA,Flanagan JG,Holt CE

Species

Not Applicable

Dilution

Not Cited

Year

2019

PloS one

Neuron glia-related cell adhesion molecule (NrCAM) promotes topographic retinocollicular mapping.

"37-1700 was used in western blot to assess the role of neuron-glia related cell adhesion molecule in retinotopic mapping."

Authors: Dai J,Buhusi M,Demyanenko GP,Brenneman LH,Hruska M,Dalva MB,Maness PF

Species

Human

Dilution

1:250

Year

2014

[View more IP references on thermofisher.com](#)

Western Blot (5)

eLife

Receptor-specific interactome as a hub for rapid cue-induced selective translation in axons.

"Published figure using EphB2 monoclonal antibody (Product # 37-1700) in Immunoprecipitation"

Authors: Koppers M,Cagnetta R,Shigeoka T,Wunderlich LC,Vallejo-Ramirez P,Qiaojin Lin J,Zhao S,Jakobs MA,Dwivedy A,Minett MS,Bellon A,Kaminski CF,Harris WA,Flanagan JG,Holt CE

Species

Not Applicable

Dilution

Not Cited

Year

2019

Molecular biology of the cell

Ubiquitin ligase SPSB4 diminishes cell repulsive responses mediated by EphB2.

"Published figure using EphB2 monoclonal antibody (Product # 37-1700) in Western Blot"

Authors: Okumura F,Joo-Okumura A,Obara K,Petersen A,Nishikimi A,Fukui Y,Nakatsukasa K,Kamura T

Species

Not Applicable

Dilution

Not Cited

Year

2017

[View more WB references on thermofisher.com](#)

More applications with references on thermofisher.com

Misc (2) IF (2)

For Research Use Only. Not for use in diagnostic procedures. Not for resale without express authorization. Products are warranted to operate or perform substantially in conformance with published Product specifications in effect at the time of sale, as set forth in the Production documentation, specifications and/or accompanying package inserts ("Documentation"). No claim of suitability for use in applications regulated by FDA is made. The warranty provided herein is valid only when used by properly trained individuals. Unless otherwise stated in the Documentation, this warranty is limited to one year from date of shipment when the Product is subjected to normal, proper and intended usage. This warranty does not extend to anyone other than the Buyer. Any model or sample furnished to Buyer is merely illustrative of the general type and quality of goods and does not represent that any Product will conform to such model or sample. NO OTHER WARRANTIES, EXPRESS OR IMPLIED, ARE GRANTED INCLUDING WITHOUT LIMITATION, IMPLIED WARRANTIES OF MERCHANTABILITY, FITNESS FOR ANY PARTICULAR PURPOSE, OR NON-INFRINGEMENT. BUYER'S EXCLUSIVE REMEDY FOR NON-CONFORMING PRODUCTS DURING THE WARRANTY PERIOD IS LIMITED TO REPAIR, REPLACEMENT OF OR REFUND FOR THE NON-CONFORMING PRODUCT(S) AT SELLER'S SOLE OPTION. THERE IS NO OBLIGATION TO REPAIR, REPLACE OR REFUND FOR PRODUCTS AS THE RESULT OF (I) ACCIDENT, DISASTER OR EVENT OF FORCE MAJEURE, (II) MISUSE, FAULT OR NEGLIGENCE OF OR BY BUYER, (III) USE OF THE PRODUCTS IN A MANNER FOR WHICH THEY WERE NOT DESIGNED, OR (IV) IMPROPER STORAGE AND HANDLING OF THE PRODUCTS. Unless otherwise expressly stated on the Product or in the documentation accompanying the Product, the Product is intended for research only and is not to be used for any other purpose, including without limitation, unauthorized commercial uses, in vitro diagnostic uses, ex vivo or in vivo therapeutic uses, or any type of consumption by or application to human or animals.