

PEBP1 Monoclonal Antibody (3E12D7)

Product Details	
Size	100 µg
Species Reactivity	Human, Mouse, Non-human primate
Published Species	Human
Host/Isotype	Mouse / IgG1, kappa
Class	Monoclonal
Type	Antibody
Clone	3E12D7
Conjugate	Unconjugated
Immunogen	Raised against the C-term of human RKIP.
Form	Liquid
Concentration	0.5 mg/mL
Purification	Protein A
Storage buffer	PBS, pH 7.4
Contains	0.1% sodium azide
Storage conditions	-20°C
RRID	AB_2533305

Applications	Tested Dilution	Publications
Western Blot (WB)	1-3 µg/mL	2 Publications
Immunocytochemistry (ICC/IF)	2 µg/mL	-
Immunoprecipitation (IP)	Assay-dependent	-

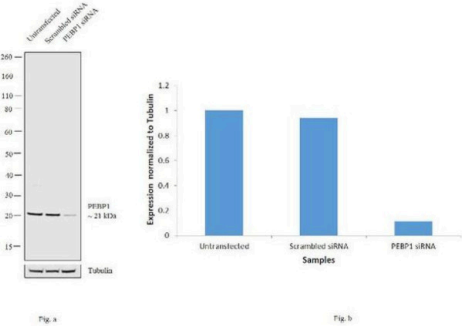
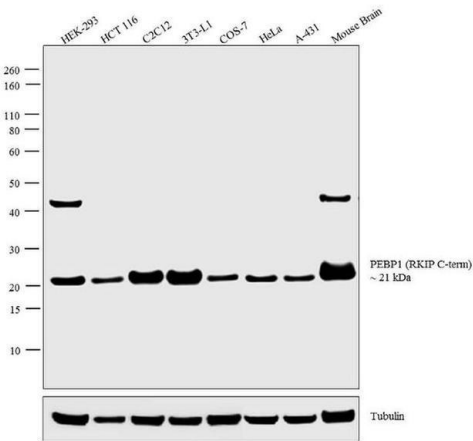
Product Images For PEBP1 Monoclonal Antibody (3E12D7)

PEBP1 Antibody (37-2100) in WB

Western blot analysis was performed on membrane-enriched extracts (30 µg lysate) of HEK-293 (Lane 1), HCT 116 (Lane 2), C2C12 (Lane 3), 3T3-L1 (Lane 4), COS-7 (Lane 5), HeLa (Lane 6), A-431 (Lane 7), and tissue extract (30 µg lysate) of mouse brain (Lane 8). The blots were probed with Mouse Anti-RKIP (C-term) Monoclonal Antibody (Product # 37-2100, 2 µg/mL) and detected by chemiluminescence using Goat anti-Mouse IgG (H+L) Superclonal™ Secondary Antibody, HRP conjugate (Product # A28177, 0.25 µg/mL, 1:4000 dilution). A 21 kDa band corresponding to PEBP1 (RKIP C-term) was observed across the cell lines and tissues tested. The 42 kDa band observed in HEK-293 (Lane 1) and mouse brain (Lane 7) could potentially be PEBP1 dimers, caused by the PKC-mediated phosphorylation of PEBP1, as reported in literature. Known quantity of protein samples were electrophoresed using Novex® NuPAGE® 4-12 % Bis-Tris gel (Product # NP0321BOX), XCell SureLock™ Electrophoresis System (Product # EI0002) and Novex® Sharp Pre-Stained Protein Standard (Product # LC5800). Resolved proteins were then transferred onto a nitrocellulose membrane with iBlot® 2 Dry Blotting System (Product # IB21001). The membrane was probed with the relevant primary and secondary Antibody following blocking with 5 % skimmed milk. Chemiluminescent detection was performed using Pierce™ ECL Western Blotting Substrate (Product # 32106).

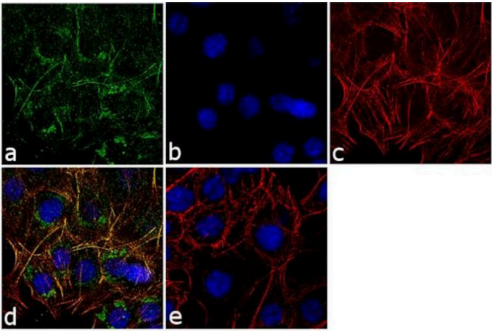
PEBP1 Antibody (37-2100)

Antibody specificity was demonstrated by siRNA mediated knockdown of target protein. HeLa cells were transfected with PEBP1 siRNA and loss of signal was observed in Western Blot using Anti-PEBP1 Monoclonal Antibody (Product # 37-2100). {KD}



PEBP1 Antibody (37-2100) in ICC/IF

Immunofluorescence analysis of PEBP1 was performed using 70% confluent log phase HCT-116 cells. The cells were fixed with 4% paraformaldehyde for 10 minutes, permeabilized with 0.1% Triton™ X-100 for 10 minutes, and blocked with 1% BSA for 1 hour at room temperature. The cells were labeled with Prostate Specific Acid Phosphatase (PASE/4LJ) Mouse Monoclonal Antibody (3721) at 2 µg/mL in 0.1% BSA and incubated for 3 hours at room temperature and then labeled with Goat anti-Mouse IgG (H+L) Superclonal™ Secondary Antibody, Alexa Fluor® 488 conjugate (Product # A28175) at a dilution of 1:2000 for 45 minutes at room temperature (Panel a: green). Nuclei (Panel b: blue) were stained with SlowFade® Gold Antifade Mountant with DAPI (Product # S36938). F-actin (Panel c: red) was stained with Alexa Fluor® 555 Rhodamine Phalloidin (Product # R415, 1:300). Panel d represents the merged image showing cytoplasmic localization. Panel e shows the control without primary antibody. The images were captured at 60X magnification.



View more figures on thermofisher.com

Western Blot (2)

<p>Cancers</p> <p>RKIP Regulates Differentiation-Related Features in Melanocytic Cells.</p> <p>"Published figure using PEBP1 monoclonal antibody (Product # 37-2100) in Western Blot"</p> <p>Authors: Penas C, Apraiz A, Muñoa I, Arroyo-Berdugo Y, Rasero J, Ezkurra PA, Velasco V, Subiran N, Bosserhoff AK, Alonso S, Asumendi A, Boyano MD</p>	<p>Year 2020</p> <p>Species Human</p> <p>Dilution 1:5000</p>
<p>Proteomics. Clinical applications</p> <p>Proteomic characterization of differentially expressed proteins in breast cancer: Expression of hnRNP H1, RKIP and GRP78 is strongly associated with HER-2/neu status.</p> <p>Authors: Zhang D, Tai LK, Wong LL, Putti TC, Sethi SK, Teh M, Koay ES</p>	<p>Year 2008</p> <p>Species Human</p>

For Research Use Only. Not for use in diagnostic procedures. Not for resale without express authorization. Products are warranted to operate or perform substantially in conformance with published Product specifications in effect at the time of sale, as set forth in the Production documentation, specifications and/or accompanying package inserts ("Documentation"). No claim of suitability for use in applications regulated by FDA is made. The warranty provided herein is valid only when used by properly trained individuals. Unless otherwise stated in the Documentation, this warranty is limited to one year from date of shipment when the Product is subjected to normal, proper and intended usage. This warranty does not extend to anyone other than the Buyer. Any model or sample furnished to Buyer is merely illustrative of the general type and quality of goods and does not represent that any Product will conform to such model or sample. NO OTHER WARRANTIES, EXPRESS OR IMPLIED, ARE GRANTED INCLUDING WITHOUT LIMITATION, IMPLIED WARRANTIES OF MERCHANTABILITY, FITNESS FOR ANY PARTICULAR PURPOSE, OR NON INFRINGEMENT. BUYER'S EXCLUSIVE REMEDY FOR NON-CONFORMING PRODUCTS DURING THE WARRANTY PERIOD IS LIMITED TO REPAIR, REPLACEMENT OF OR REFUND FOR THE NON-CONFORMING PRODUCT(S) AT SELLER'S SOLE OPTION. THERE IS NO OBLIGATION TO REPAIR, REPLACE OR REFUND FOR PRODUCTS AS THE RESULT OF (I) ACCIDENT, DISASTER OR EVENT OF FORCE MAJEURE, (II) MISUSE, FAULT OR NEGLIGENCE OF OR BY BUYER, (III) USE OF THE PRODUCTS IN A MANNER FOR WHICH THEY WERE NOT DESIGNED, OR (IV) IMPROPER STORAGE AND HANDLING OF THE PRODUCTS. Unless otherwise expressly stated on the Product or in the documentation accompanying the Product, the Product is intended for research only and is not to be used for any other purpose, including without limitation, unauthorized commercial uses, in vitro diagnostic uses, ex vivo or in vivo therapeutic uses, or any type of consumption by or application to human or animals.