

# Claudin 1 Monoclonal Antibody (2H10D10), Alexa Fluor 488

## Product Details

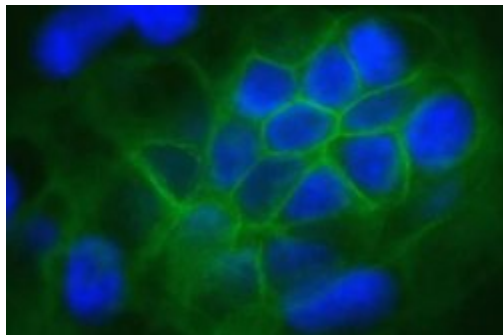
Size	100 µg
Species Reactivity	Dog, Human, Mouse, Rat
Published Species	Human
Host/Isotype	Mouse / IgG1
Class	Monoclonal
Type	Antibody
Clone	2H10D10
Conjugate	Alexa Fluor® 488
Immunogen	Synthetic peptide derived from the C-terminal region of the human and mouse claudin-1 proteins
Form	Liquid
Concentration	0.5 mg/mL
Purification	Protein A
Storage buffer	PBS, pH 7.4, with 4.0mg/mL BSA
Contains	0.1% sodium azide
Storage Conditions	4° C, store in dark
RRID	AB_2532190

Applications	Tested Dilution	Publications
Western Blot (WB)	1-3 µg/mL	-
Immunohistochemistry (Frozen) (IHC (F))	5-10 µg/mL	-
Immunocytochemistry (ICC)	-	1 Publication
Immunofluorescence (IF)	-	1 Publication
ELISA (ELISA)	0.1-1.0 µg/mL	-
Immunoprecipitation (IP)	10 µg/test	-
Immunocytochemistry (ICC/IF)	1-5 µg/mL	-

## Product Specific Information

Reactivity has been confirmed with human Caco-2 and canine MDCK cell lysates, mouse kidney and intestinal lysates, frozen mouse intestine (jejunum) tissue, and rat kidney homogenates.

## Product Images For Claudin 1 Monoclonal Antibody (2H10D10), Alexa Fluor 488



### Claudin 1 Antibody (374988) in ICC/IF

Human Caco-2 cells stained with Claudin-1, Mouse Monoclonal Antibody - Alexa Fluor® 488 (Product # 374988). DNA is counter stained with blue Hoechst 33258 (Product # H3569).

## 2 References

### Immunocytochemistry (1)

Journal of the American Heart Association

#### Inhibition of MicroRNA-155 Supports Endothelial Tight Junction Integrity Following Oxygen-Glucose Deprivation.

Authors: Pena-Philippides JC, Gardiner AS, Caballero-Garrido E, Pan R, Zhu Y, Roitbak T

**Species**  
Human

**Dilution**  
1:120

**Year**  
2018

### Immunofluorescence (1)

Journal of the American Heart Association

#### Inhibition of MicroRNA-155 Supports Endothelial Tight Junction Integrity Following Oxygen-Glucose Deprivation.

Authors: Pena-Philippides JC, Gardiner AS, Caballero-Garrido E, Pan R, Zhu Y, Roitbak T

**Species**  
Human

**Dilution**  
1:120

**Year**  
2018

For Research Use Only. Not for use in diagnostic procedures. Not for resale without express authorization. Products are warranted to operate or perform substantially in conformance with published Product specifications in effect at the time of sale, as set forth in the Production documentation, specifications and/or accompanying package inserts ("Documentation"). No claim of suitability for use in applications regulated by FDA is made. The warranty provided herein is valid only when used by properly trained individuals. Unless otherwise stated in the Documentation, this warranty is limited to one year from date of shipment when the Product is subjected to normal, proper and intended usage. This warranty does not extend to anyone other than the Buyer. Any model or sample furnished to Buyer is merely illustrative of the general type and quality of goods and does not represent that any Product will conform to such model or sample. NO OTHER WARRANTIES, EXPRESS OR IMPLIED, ARE GRANTED INCLUDING WITHOUT LIMITATION, IMPLIED WARRANTIES OF MERCHANTABILITY, FITNESS FOR ANY PARTICULAR PURPOSE, OR NON INFRINGEMENT. BUYER'S EXCLUSIVE REMEDY FOR NON-CONFORMING PRODUCTS DURING THE WARRANTY PERIOD IS LIMITED TO REPAIR, REPLACEMENT OF OR REFUND FOR THE NON-CONFORMING PRODUCT(S) AT SELLER'S SOLE OPTION. THERE IS NO OBLIGATION TO REPAIR, REPLACE OR REFUND FOR PRODUCTS AS THE RESULT OF (I) ACCIDENT, DISASTER OR EVENT OF FORCE MAJEURE, (II) MISUSE, FAULT OR NEGLIGENCE OF OR BY BUYER, (III) USE OF THE PRODUCTS IN A MANNER FOR WHICH THEY WERE NOT DESIGNED, OR (IV) IMPROPER STORAGE AND HANDLING OF THE PRODUCTS. Unless otherwise expressly stated on the Product or in the documentation accompanying the Product, the Product is intended for research only and is not to be used for any other purpose, including without limitation, unauthorized commercial uses, in vitro diagnostic uses, ex vivo or in vivo therapeutic uses, or any type of consumption by or application to human or animals.