

CD235a (Glycophorin A) Monoclonal Antibody (10F7MN), Brilliant Ultra Violet™ 661, eBioscience™

Product Details	
Size	25 Tests
Species Reactivity	Human
Host/Isotype	Mouse / IgG1, kappa
Recommended Isotype Control	Mouse IgG1 kappa Isotype Control (P3.6.2.8.1), Brilliant Ultra Violet™ 661, eBioscience™
Class	Monoclonal
Type	Antibody
Clone	10F7MN
Conjugate	Brilliant Ultra Violet™ 661
Excitation/Emission Max	349/659 nm
Form	Liquid
Concentration	5 µL/Test
Purification	Affinity chromatography
Storage buffer	PBS, pH 7.2, with BSA
Contains	0.09% sodium azide
Storage conditions	4° C, store in dark, DO NOT FREEZE!
RRID	AB_2925476

Applications	Tested Dilution	Publications
Flow Cytometry (Flow)	5 µL (0.5 µg)/test	-

Product Specific Information

Description: The monoclonal antibody 10F7MN recognizes human glycophorin A (also known as CD235a). The antibody can see both the M and N alleles. Glycophorin A is a 151 amino acid sialoglycoprotein found on the erythrocyte (RBC) and erythroid progenitor cell membrane at about 500,000 copies per cell. The gene for glycophorin resides on chromosome 4 and has 2 allelic forms: M and N, which differ in two amino acids. The M group possesses Ser1 and Gly5 while the N group has Leu1 and Glu5. Recent data suggest that exposure to toxins can cause mutation or loss of an allele resulting in phenotypic changes. Studies are also beginning to correlate genotype/phenotype with predisposition to cancer and heart disease.

Applications Reported: This 10F7MN antibody has been reported for use in flow cytometric analysis.

Applications Tested: This 10F7MN antibody has been pre-diluted and tested by flow cytometric analysis of normal human peripheral blood cells. This may be used at 5 µL (0.5 µg) per test. A test is defined as the amount (µg) of antibody that will stain a cell sample in a final volume of 100 µL. Cell number should be determined empirically but can range from 10⁵ to 10⁸ cells /test.

Brilliant Ultra Violet™ 661 (BUV661) is a tandem dye that emits at 660 nm and is intended for use on cytometers equipped with an ultraviolet (355 nm) laser. Please make sure that your instrument is capable of detecting this fluorochrome.

When using two or more Super Bright, Brilliant Violet™, Brilliant Ultra Violet™, or other polymer dye-conjugated antibodies in a staining panel, it is recommended to use Super Bright Complete Staining Buffer (Product # SB-4401-42) or Brilliant Stain Buffer™ (Product # 00-4409-75) to minimize any non-specific polymer interactions. Please refer to the datasheet for Super Bright Staining Buffer or Brilliant Stain Buffer for more information.

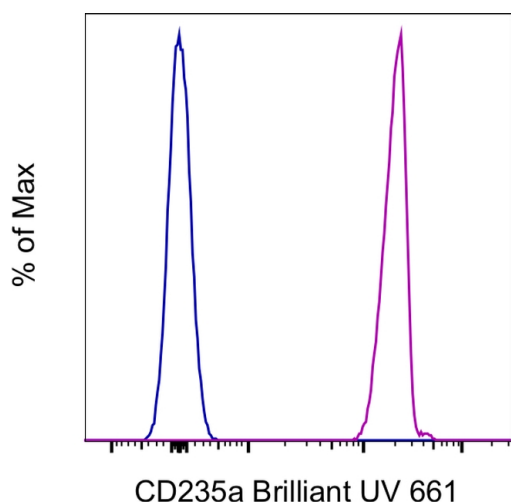
Light sensitivity: This tandem dye is sensitive to photo-induced oxidation. Please protect this vial and stained samples from light.

Fixation: Samples can be stored in IC Fixation Buffer (Product # 00-8222-49) (100 μ L of cell sample + 100 μ L of IC Fixation Buffer) or 1-step Fix/Lyse Solution (Product # 00-5333-54) for up to 3 days in the dark at 4°C with minimal impact on brightness and FRET efficiency/compensation. Some generalizations regarding fluorophore performance after fixation can be made, but clone-specific performance should be determined empirically.

Excitation: 350 nm; Emission: 660 nm; Laser: Ultraviolet Laser.

BRILLIANT ULTRA VIOLET™ is a trademark or registered trademark of Becton, Dickinson and Company or its affiliates, and is used under license. Powered by Sirigen™.

Product Images For CD235a (Glycophorin A) Monoclonal Antibody (10F7MN), Brilliant Ultra Violet™ 661, eBioscience™



CD235a (Glycophorin A) Antibody (376-9886-41) in Flow

Normal human peripheral blood cells were stained with Mouse IgG1 kappa Isotype Control, Brilliant Ultra Violet 661 (Product # 376-4714-81) (blue histogram) or CD235a (Glycophorin A) Monoclonal Antibody, Brilliant Ultra Violet 661 (purple histogram). Cells in the erythrocyte gate were used for analysis.

For Research Use Only. Not for use in diagnostic procedures. Not for resale without express authorization. Products are warranted to operate or perform substantially in conformance with published Product specifications in effect at the time of sale, as set forth in the Production documentation, specifications and/or accompanying package inserts ("Documentation"). No claim of suitability for use in applications regulated by FDA is made. The warranty provided herein is valid only when used by properly trained individuals. Unless otherwise stated in the Documentation, this warranty is limited to one year from date of shipment when the Product is subjected to normal, proper and intended usage. This warranty does not extend to anyone other than the Buyer. Any model or sample furnished to Buyer is merely illustrative of the general type and quality of goods and does not represent that any Product will conform to such model or sample. NO OTHER WARRANTIES, EXPRESS OR IMPLIED, ARE GRANTED INCLUDING WITHOUT LIMITATION, IMPLIED WARRANTIES OF MERCHANTABILITY, FITNESS FOR ANY PARTICULAR PURPOSE, OR NON INFRINGEMENT. BUYER'S EXCLUSIVE REMEDY FOR NON-CONFORMING PRODUCTS DURING THE WARRANTY PERIOD IS LIMITED TO REPAIR, REPLACEMENT OF OR REFUND FOR THE NON-CONFORMING PRODUCT(S) AT SELLER'S SOLE OPTION. THERE IS NO OBLIGATION TO REPAIR, REPLACE OR REFUND FOR PRODUCTS AS THE RESULT OF (I) ACCIDENT, DISASTER OR EVENT OF FORCE MAJEURE, (II) MISUSE, FAULT OR NEGLIGENCE OF OR BY BUYER, (III) USE OF THE PRODUCTS IN A MANNER FOR WHICH THEY WERE NOT DESIGNED, OR (IV) IMPROPER STORAGE AND HANDLING OF THE PRODUCTS. Unless otherwise expressly stated on the Product or in the documentation accompanying the Product, the Product is intended for research only and is not to be used for any other purpose, including without limitation, unauthorized commercial uses, in vitro diagnostic uses, ex vivo or in vivo therapeutic uses, or any type of consumption by or application to human or animals.