

# PAX3 Polyclonal Antibody

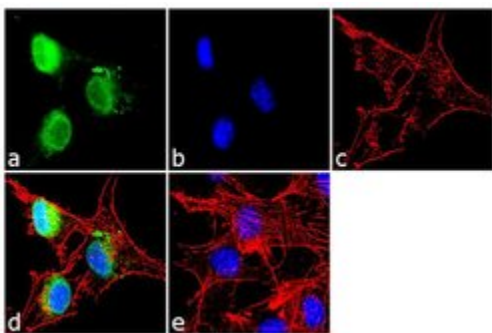
Product Details	
Size	100 µL
Species Reactivity	Human, Mouse
Published Species	Human, Mouse
Host/Isotype	Rabbit / IgG
Class	Polyclonal
Type	Antibody
Conjugate	Unconjugated
Immunogen	His6-tagged recombinant protein derived from a portion of the N-terminus of the mouse Pax3 sequence, encompassing the paired box and homeobox domains
Form	Liquid
Concentration	Conc. Not Determined
Storage buffer	whole serum
Contains	0.1% sodium azide
Storage conditions	-20°C
RRID	AB_2533359

Applications	Tested Dilution	Publications
Western Blot (WB)	Assay-dependent	2 Publications
Immunohistochemistry (IHC)	-	2 Publications
Immunohistochemistry (Paraffin) (IHC (P))	1:100	1 Publication
Immunohistochemistry (Frozen) (IHC (F))	Assay-Dependent	-
Immunocytochemistry (ICC/IF)	1:250	4 Publications
Immunoprecipitation (IP)	Assay-dependent	1 Publication

## Product Images For PAX3 Polyclonal Antibody

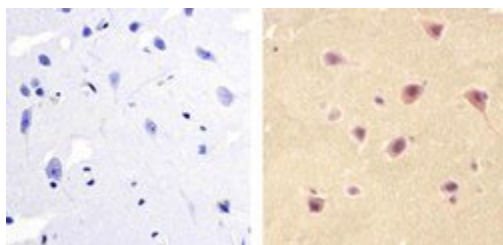
### PAX3 Antibody (38-1801) in ICC/IF

Immunofluorescence analysis of PAX3 was performed using 70% confluent log phase U-87 MG cells. The cells were fixed with 4% paraformaldehyde for 10 minutes, permeabilized with 0.1% Triton™ X-100 for 10 minutes, and blocked with 2% BSA for 1 hour at room temperature. The cells were labeled with PAX3 Rabbit Polyclonal Antibody (Product # 38-1801) at 1:250 dilution in 0.1% BSA and incubated for 3 hours at room temperature and then labeled with Goat anti-Rabbit IgG (H+L) Superclonal™ Secondary Antibody, Alexa Fluor® 488 conjugate (Product # A27034) a dilution of 1:2000 for 45 minutes at room temperature (Panel a: green). Nuclei (Panel b: blue) were stained with SlowFade® Gold Antifade Mountant with DAPI (Product # S36938). F-actin (Panel c: red) was stained with Rhodamine Phalloidin (Product # R415, 1:300). Panel d represents the merged image showing nuclear localization. Panel e shows the no primary antibody control. The images were captured at 60X magnification.



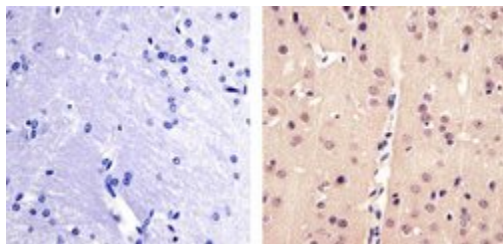
### PAX3 Antibody (38-1801) in IHC (P)

Immunohistochemistry analysis of PAX3 showing staining in the nucleus of paraffin-embedded human brain tissue (right) compared to a negative control without primary antibody (left). To expose target proteins, antigen retrieval was performed using 10mM sodium citrate (pH 6.0), microwaved for 8-15 min. Following antigen retrieval, tissues were blocked in 3% H<sub>2</sub>O<sub>2</sub>-methanol for 15 min at room temperature, washed with ddH<sub>2</sub>O and PBS, and then probed with a Anti- PAX3 Polyclonal Antibody (Product # 38-1801) diluted in 3% BSA-PBS at a dilution of 1:100 overnight at 4°C in a humidified chamber. Tissues were washed extensively in PBST and detection was performed using an HRP-conjugated secondary antibody followed by colorimetric detection using a DAB kit. Tissues were counterstained with hematoxylin and dehydrated with ethanol and xylene to prep for mounting.



### PAX3 Antibody (38-1801) in IHC (P)

Immunohistochemistry analysis of PAX3 showing staining in the nucleus of paraffin-embedded mouse brain tissue (right) compared to a negative control without primary antibody (left). To expose target proteins, antigen retrieval was performed using 10mM sodium citrate (pH 6.0), microwaved for 8-15 min. Following antigen retrieval, tissues were blocked in 3% H<sub>2</sub>O<sub>2</sub>-methanol for 15 min at room temperature, washed with ddH<sub>2</sub>O and PBS, and then probed with a Anti- PAX3 Polyclonal Antibody (Product # 38-1801) diluted in 3% BSA-PBS at a dilution of 1:100 overnight at 4°C in a humidified chamber. Tissues were washed extensively in PBST and detection was performed using an HRP-conjugated secondary antibody followed by colorimetric detection using a DAB kit. Tissues were counterstained with hematoxylin and dehydrated with ethanol and xylene to prep for mounting.



[View more figures on thermofisher.com](https://www.thermofisher.com)

## 10 References

### Western Blot (2)

#### Nature genetics

##### Recurrent PAX3-MAML3 fusion in biphenotypic sinonasal sarcoma.

"38-1801 was used in western blot to investigate PAX3-MAML3 fusion in biphenotypic sinonasal sarcoma"

Authors: Wang X,Bledsoe KL,Graham RP,Asmann YW,Viswanatha DS,Lewis JE,Lewis JT,Chou MM,Yaszemski MJ, Jen J,Westendorf JJ,Oliveira AM

**Species**  
Human

**Dilution**  
1:1000

**Year**  
2014

#### Stem cells (Dayton, Ohio)

##### Direct reprogramming of melanocytes to neural crest stem-like cells by one defined factor.

"Published figure using PAX3 polyclonal antibody (Product # 38-1801) in Immunofluorescence"

Authors: Zabierowski SE,Baubet V,Himes B,Li L,Fukunaga-Kalabis M,Patel S,McDaid R,Guerra M,Gimotty P,Dahmane N,Dahamne N,Herlyn M

**Species**  
Not Applicable

**Dilution**  
Not Cited

**Year**  
2011

### Immunohistochemistry (2)

#### Nature communications

##### The protective role of DOT1L in UV-induced melanomagenesis.

"Published figure using PAX3 polyclonal antibody (Product # 38-1801) in Immunohistochemistry"

Authors: Zhu B,Chen S,Wang H,Yin C,Han C,Peng C,Liu Z,Wan L,Zhang X,Zhang J,Lian CG,Ma P,Xu ZX,Prince S, Wang T,Gao X,Shi Y,Liu D,Liu M,Wei W,Wei Z,Pan J,Wang Y,Xuan Z,Hess J,Hayward NK,Goding CR,Chen X,Zhou J, Cui R

**Species**  
Not Applicable

**Dilution**  
Not Cited

**Year**  
2018

#### Molecular and cellular biology

##### Pax3-FKHR knock-in mice show developmental aberrations but do not develop tumors.

Authors: Lagutina I,Conway SJ,Sublett J,Grosveld GC

**Species**  
Human  
Mouse

**Dilution**  
Not Cited  
Not Cited

**Year**  
2002

### More applications with references on thermofisher.com

IHC (P) (1)

ICC/IF (4)

IP (1)

For Research Use Only. Not for use in diagnostic procedures. Not for resale without express authorization. Products are warranted to operate or perform substantially in conformance with published Product specifications in effect at the time of sale, as set forth in the Production documentation, specifications and/or accompanying package inserts ("Documentation"). No claim of suitability for use in applications regulated by FDA is made. The warranty provided herein is valid only when used by properly trained individuals. Unless otherwise stated in the Documentation, this warranty is limited to one year from date of shipment when the Product is subjected to normal, proper and intended usage. This warranty does not extend to anyone other than the Buyer. Any model or sample furnished to Buyer is merely illustrative of the general type and quality of goods and does not represent that any Product will conform to such model or sample. NO OTHER WARRANTIES, EXPRESS OR IMPLIED, ARE GRANTED INCLUDING WITHOUT LIMITATION, IMPLIED WARRANTIES OF MERCHANTABILITY, FITNESS FOR ANY PARTICULAR PURPOSE, OR NON INFRINGEMENT. BUYER'S EXCLUSIVE REMEDY FOR NON-CONFORMING PRODUCTS DURING THE WARRANTY PERIOD IS LIMITED TO REPAIR, REPLACEMENT OF OR REFUND FOR THE NON-CONFORMING PRODUCT(S) AT SELLER'S SOLE OPTION. THERE IS NO OBLIGATION TO REPAIR, REPLACE OR REFUND FOR PRODUCTS AS THE RESULT OF (I) ACCIDENT, DISASTER OR EVENT OF FORCE MAJEURE, (II) MISUSE, FAULT OR NEGLIGENCE OF OR BY BUYER, (III) USE OF THE PRODUCTS IN A MANNER FOR WHICH THEY WERE NOT DESIGNED, OR (IV) IMPROPER STORAGE AND HANDLING OF THE PRODUCTS. Unless otherwise expressly stated on the Product or in the documentation accompanying the Product, the Product is intended for research only and is not to be used for any other purpose, including without limitation, unauthorized commercial uses, in vitro diagnostic uses, ex vivo or in vivo therapeutic uses, or any type of consumption by or application to human or animals.