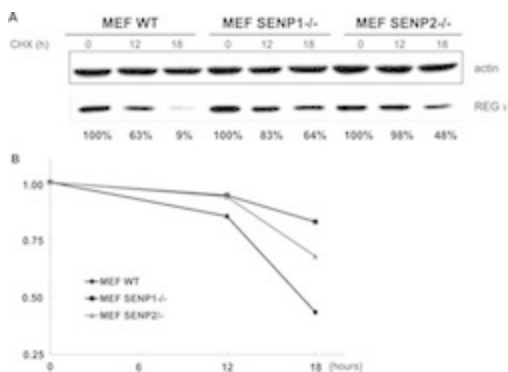


# PSME3 Polyclonal Antibody

Product Details	
Size	100 µg
Species Reactivity	Human, Mouse, Non-human primate, Rat
Published Species	Tag, Non-human primate, Human, Mouse
Host/Isotype	Rabbit / IgG
Class	Polyclonal
Type	Antibody
Conjugate	Unconjugated
Immunogen	Synthetic peptide derived from the N-terminal region of the human, mouse, rat and pig PA28-gamma (proteasome activator 28-gamma, Ki antigen) protein
Form	Liquid
Concentration	0.25 mg/mL
Purification	Antigen affinity chromatography
Storage buffer	PBS, pH 7.4
Contains	0.1% sodium azide
Storage conditions	-20°C
RRID	AB_2533368

Applications	Tested Dilution	Publications
Western Blot (WB)	2 µg/mL	7 Publications
Immunocytochemistry (ICC/IF)	-	1 Publication
Immunoprecipitation (IP)	Assay-dependent	2 Publications

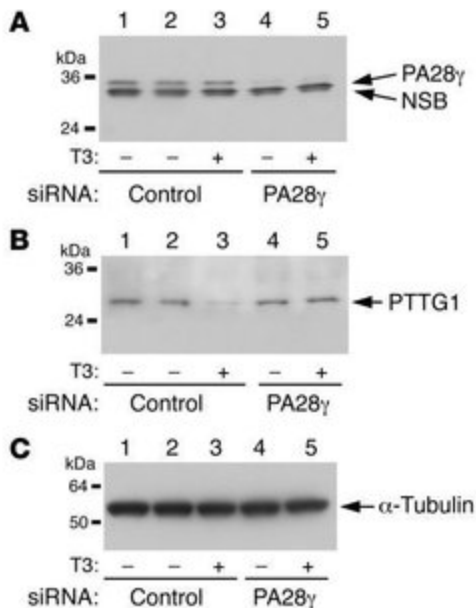


**PSME3 Antibody (38-3800)**

Figure 5 SUMOylation augments REGgamma stability. (A) REGgamma stability is increased in SENP-1 <sup>-/-</sup> and SENP-2 <sup>-/-</sup> MEFs. WT, SENP-1 <sup>-/-</sup> and SENP-2 <sup>-/-</sup> MEF cells were treated with cycloheximide (100 μg / ml) for the indicated time. An equal amount of total protein was loaded for western blotting analysis. (B) Quantitative analysis of REGgamma stability in SENP null MEFs. Experiments were performed as described in (A) . Relative REGgamma level was plotted against the time course following cycloheximide treatment. Data are shown as mean of three independent experiments (standard deviation of the last time point is shown). Cell treatment validation info.

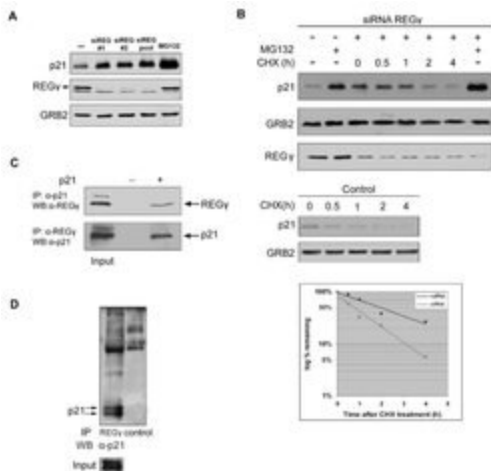
**PSME3 Antibody (38-3800)**

Figure 7 Stabilization of endogenous PTTG1 by siRNA knockdown of PA28gamma expression in cells. CV-1 cells were cotransfected with a control siRNA (lanes 1-3) or PA28gamma (lanes 4 and 5), with (lanes 2-5) or without (lane 1, control) the expression plasmid of TRbeta1. Cells were treated with (lanes 3 and 5) or without (lanes 1, 2, or 4) 100 nM T3. Endogenous PA28gamma ( A ) or PTTG1 ( B ) protein levels were detected by Western blot analysis using anti-PA28gamma or anti-PTTG1 antibodies. "NSB" in A indicates a nonspecific band migrating slightly faster than PA28gamma ( 23 ). ( C ) Corresponding loading controls using alpha-tubulin. Knockdown validation info.



**PSME3 Antibody (38-3800)**

REG? is involved in p21 degradation A. Effects of different siRNAs against REG? on p21 level. U2OS cells were transfected with two individual siRNAs (#1 and #2) or a pool of four siRNAs against REG?. p21 steady state levels were determined by Western blotting. B. Effect of RNA interference of REG? on p21 half life. U2OS cells were transfected with the siRNA pool against REG?. Cells were treated with cycloheximide for indicated times. p21 half-lives in control U2OS cells were analyzed as well. C. Interaction between transfected p21 and endogenous REG?. 293 cells were transfected with p21 and treated with MG-132 for 4 hr. Cell lysates were immunoprecipitated with anti-p21 or anti-REG? antibodies, and the associated protein was detected by Western blotting. D. Interaction between endogenous p21 and REG?. U2OS cells were treated with MG-132 for 6 hr and cell lysates were immunoprecipitated with anti-REG? antibodies or irrelevant immune serum followed by Western blotting with anti-p21 antibodies. Knockdown validation info.



View more figures on [thermofisher.com](http://thermofisher.com)

## 10 References

### Western Blot (7)

#### Cancer research

#### p53 is positively regulated by miR-542-3p.

Authors: Wang Y,Huang JW,Castella M,Huntsman DG,Taniguchi T

**Species**  
Human

**Dilution**  
Not Cited

**Year**  
2014

#### Molecular cancer research : MCR

#### ARF regulates the stability of p16 protein via REG-dependent proteasome degradation.

"Published figure using PSME3 polyclonal antibody (Product # 38-3800) in Western Blot"

Authors: Kobayashi T,Wang J,Al-Ahmadie H,Abate-Shen C

**Species**  
Not Applicable

**Dilution**  
Not Cited

**Year**  
2013

[View more WB references on thermofisher.com](#)

### Immunocytochemistry (1)

#### Cell research

#### Regulation of REG cellular distribution and function by SUMO modification.

"38-3800 was used in immunocytochemistry and western blot to study the role of SUMOylation in the regulation of the REGgamma-proteasome pathway."

Authors: Wu Y,Wang L,Zhou P,Wang G,Zeng Y,Wang Y,Liu J,Zhang B,Liu S,Luo H,Li X

**Species**  
Human

**Dilution**  
Not Cited

**Year**  
2011

### Immunoprecipitation (2)

#### Cell research

#### Regulation of REG cellular distribution and function by SUMO modification.

"38-3800 was used in immunocytochemistry and western blot to study the role of SUMOylation in the regulation of the REGgamma-proteasome pathway."

Authors: Wu Y,Wang L,Zhou P,Wang G,Zeng Y,Wang Y,Liu J,Zhang B,Liu S,Luo H,Li X

**Species**  
Human

**Dilution**  
Not Cited

**Year**  
2011

### More applications with references on thermofisher.com

For Research Use Only. Not for use in diagnostic procedures. Not for resale without express authorization. Products are warranted to operate or perform substantially in conformance with published Product specifications in effect at the time of sale, as set forth in the Production documentation, specifications and/or accompanying package inserts ("Documentation"). No claim of suitability for use in applications regulated by FDA is made. The warranty provided herein is valid only when used by properly trained individuals. Unless otherwise stated in the Documentation, this warranty is limited to one year from date of shipment when the Product is subjected to normal, proper and intended usage. This warranty does not extend to anyone other than the Buyer. Any model or sample furnished to Buyer is merely illustrative of the general type and quality of goods and does not represent that any Product will conform to such model or sample. NO OTHER WARRANTIES, EXPRESS OR IMPLIED, ARE GRANTED INCLUDING WITHOUT LIMITATION, IMPLIED WARRANTIES OF MERCHANTABILITY, FITNESS FOR ANY PARTICULAR PURPOSE, OR NON INFRINGEMENT. BUYER'S EXCLUSIVE REMEDY FOR NON-CONFORMING PRODUCTS DURING THE WARRANTY PERIOD IS LIMITED TO REPAIR, REPLACEMENT OF OR REFUND FOR THE NON-CONFORMING PRODUCT(S) AT SELLER'S SOLE OPTION. THERE IS NO OBLIGATION TO REPAIR, REPLACE OR REFUND FOR PRODUCTS AS THE RESULT OF (I) ACCIDENT, DISASTER OR EVENT OF FORCE MAJEURE, (II) MISUSE, FAULT OR NEGLIGENCE OF OR BY BUYER, (III) USE OF THE PRODUCTS IN A MANNER FOR WHICH THEY WERE NOT DESIGNED, OR (IV) IMPROPER STORAGE AND HANDLING OF THE PRODUCTS. Unless otherwise expressly stated on the Product or in the documentation accompanying the Product, the Product is intended for research only and is not to be used for any other purpose, including without limitation, unauthorized commercial uses, in vitro diagnostic uses, ex vivo or in vivo therapeutic uses, or any type of consumption by or application to human or animals.