

# BMPR1A Polyclonal Antibody

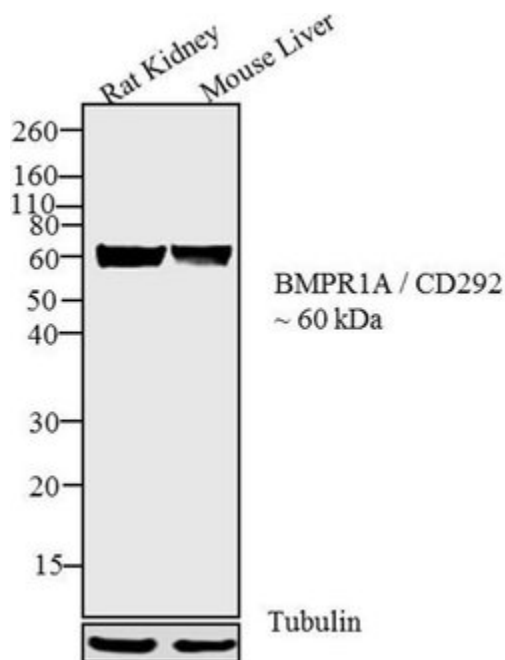
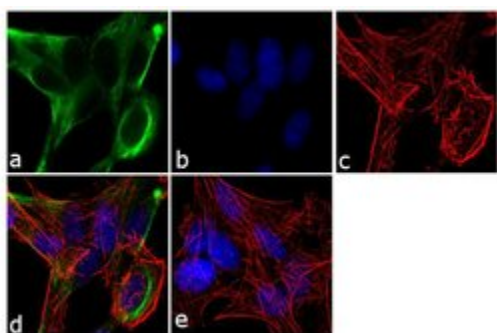
Product Details	
Size	100 µg
Species Reactivity	Human, Mouse, Rat
Published Species	Mouse, Human
Host/Isotype	Rabbit / IgG
Class	Polyclonal
Type	Antibody
Conjugate	Unconjugated
Immunogen	Synthetic peptide derived from an internal region of the human BMPR-1A (bone morphogenetic protein receptor type 1A, Serine/threonine protein kinase receptor R5 (SKR5), activin receptor-like kinase-3 (ALK-3)), which differs from mouse and rat BMPR-1A by one nonconservative amino acid replacement.
Form	Liquid
Concentration	0.25 mg/mL
Purification	Antigen affinity chromatography
Storage buffer	PBS, pH 7.4
Contains	0.1% sodium azide
Storage Conditions	-20°C
RRID	AB_2533377

Applications	Tested Dilution	Publications
Western Blot (WB)	2 µg/mL	4 Publications
Immunohistochemistry (IHC)	-	1 Publication
Immunoprecipitation (IP)	Assay Dependent	1 Publication
Immunocytochemistry (ICC/IF)	2 µg/mL	1 Publication

## Product Images For BMPR1A Polyclonal Antibody

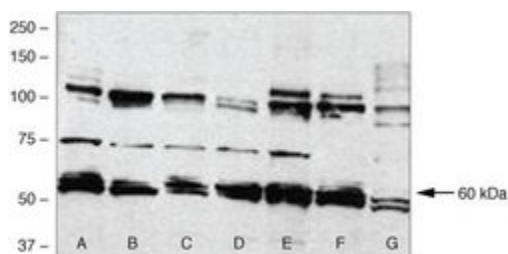
### BMPR1A Antibody (38-6000) in ICC/IF

Immunofluorescent analysis of BMPR1A /CD292 was performed using 70% confluent log phase SH-SY5Y cells. The cells were fixed with 4% paraformaldehyde for 10 minutes, permeabilized with 0.1% Triton™ X-100 for 10 minutes, and blocked with 1% BSA for 1 hour at room temperature. The cells were labeled with BMPR1A /CD292 Rabbit Polyclonal Antibody (Product # 38-6000) at 2 µg/mL in 0.1% BSA and incubated for 3 hours at room temperature and then labeled with Goat anti-Rabbit IgG (H+L) Superclonal™ Secondary Antibody, Alexa Fluor® 488 conjugate (Product # A27034) a dilution of 1:2000 for 45 minutes at room temperature (Panel a: green). Nuclei (Panel b: blue) were stained with SlowFade® Gold Antifade Mountant with DAPI (Product # S36938). F-actin (Panel c: red) was stained with Alexa Fluor® 555 Rhodamine Phalloidin (Product # R415, 1:300). Panel d represents the merged image showing cytoplasmic localization. Panel e shows the no primary antibody control. The images were captured at 60X magnification.



### BMPR1A Antibody (38-6000) in WB

Western blot analysis was performed on tissue extracts (30 µg) of Rat Kidney (Lane 1) and Mouse Liver (Lane 2). The blots were probed with Anti-BMPR1A/CD292 Rabbit Polyclonal Antibody (Product # 38-6000, 2 µg/mL) and detected by chemiluminescence using Goat anti-Rabbit IgG (H+L) Superclonal™ Secondary Antibody, HRP conjugate (Product # A27036, 0.4 µg/mL, 1:2500 dilution). A ~60 kDa band corresponding BMPR1A/CD292 to was observed across tissues tested. Known quantity of protein samples were electrophoresed using Novex® NuPAGE®4-12 % Bis-Tris gel (Product # NP0321BOX), XCell SureLock™ Electrophoresis System (Product # EI0002) and Novex® Sharp Pre-Stained Protein Standard (Product # LC5800). Resolved proteins were then transferred onto a nitrocellulose membrane by iBlot® 2 Dry Blotting System (Product # IB21001). The membrane was probed with the relevant primary and secondary Antibody using iBind™ Flex Western Starter Kit (Product # SLF2000S). Chemiluminescent detection was performed using Pierce™ ECL Western Blotting Substrate (Product # 32106).



### BMPR1A Antibody (38-6000) in WB

Western blot analysis of (A) SK-OV-3, (B) NGP96, (C) SK-MEL-19, (D) SK-MEL-37, (E) A375, and (F) MeWo cell lysates, and (G) mouse ovary homogenates using Rb anti BMPR-1A (Product # 38-6000).

View more figures on [thermofisher.com](https://www.thermofisher.com)

## Western Blot (4)

### Endocrinology

#### Reestablishment of Energy Balance in a Male Mouse Model With POMC Neuron Deletion of BMPR1A.

"38-6000 was used in Western Blotting to demonstrate an important role for hypothalamic bone morphogenetic protein signalling in the regulation of energy balance."

Authors: Townsend KL, Madden CJ, Blaszkiewicz M, McDougall L, Tupone D, Lynes MD, Mishina Y, Yu P, Morrison SF, Tseng YH

**Species**  
Mouse  
Not Applicable

**Dilution**  
Not Cited  
Not Cited

**Year**  
2017

### Disease models & mechanisms

#### S113R mutation in SLC33A1 leads to neurodegeneration and augmented BMP signaling in a mouse model.

"38-6000 was used in immunocytochemistry and western blot to characterize knock-in mice to elucidate the function of SLC33A1"

Authors: Liu P, Jiang B, Ma J, Lin P, Zhang Y, Shao C, Sun W, Gong Y

**Species**  
Mouse

**Dilution**  
1:200

**Year**  
2017

[View more WB references on thermofisher.com](#)

## Immunohistochemistry (1)

### Endocrinology

#### Reestablishment of Energy Balance in a Male Mouse Model With POMC Neuron Deletion of BMPR1A.

"38-6000 was used in Western Blotting to demonstrate an important role for hypothalamic bone morphogenetic protein signalling in the regulation of energy balance."

Authors: Townsend KL, Madden CJ, Blaszkiewicz M, McDougall L, Tupone D, Lynes MD, Mishina Y, Yu P, Morrison SF, Tseng YH

**Species**  
Mouse  
Not Applicable

**Dilution**  
Not Cited  
Not Cited

**Year**  
2017

## Immunoprecipitation (1)

### Glia

#### Galectin-3 modulates postnatal subventricular zone gliogenesis.

"38-6000 was used in Western Blotting to identify the necessity of Galectin-3 for gliogenesis and the ability to induce astrogenesis via bone morphogenetic protein signaling when expression is increased."

Authors: Al-Dalahmah O, Campos Soares L, Nicholson J, Draijer S, Mundim M, Lu VM, Sun B, Tyler T, Adorján I, O'Neill E, Szele FG

**Species**  
Human  
Not Applicable

**Dilution**  
Not Cited  
Not Cited

**Year**  
2020

## More applications with references on thermofisher.com

## ICC/IF (1)

For Research Use Only. Not for use in diagnostic procedures. Not for resale without express authorization. Products are warranted to operate or perform substantially in conformance with published Product specifications in effect at the time of sale, as set forth in the Production documentation, specifications and/or accompanying package inserts ("Documentation"). No claim of suitability for use in applications regulated by FDA is made. The warranty provided herein is valid only when used by properly trained individuals. Unless otherwise stated in the Documentation, this warranty is limited to one year from date of shipment when the Product is subjected to normal, proper and intended usage. This warranty does not extend to anyone other than the Buyer. Any model or sample furnished to Buyer is merely illustrative of the general type and quality of goods and does not represent that any Product will conform to such model or sample. NO OTHER WARRANTIES, EXPRESS OR IMPLIED, ARE GRANTED INCLUDING WITHOUT LIMITATION, IMPLIED WARRANTIES OF MERCHANTABILITY, FITNESS FOR ANY PARTICULAR PURPOSE, OR NON INFRINGEMENT. BUYER'S EXCLUSIVE REMEDY FOR NON-CONFORMING PRODUCTS DURING THE WARRANTY PERIOD IS LIMITED TO REPAIR, REPLACEMENT OF OR REFUND FOR THE NON-CONFORMING PRODUCT(S) AT SELLER'S SOLE OPTION. THERE IS NO OBLIGATION TO REPAIR, REPLACE OR REFUND FOR PRODUCTS AS THE RESULT OF (I) ACCIDENT, DISASTER OR EVENT OF FORCE MAJEURE, (II) MISUSE, FAULT OR NEGLIGENCE OF OR BY BUYER, (III) USE OF THE PRODUCTS IN A MANNER FOR WHICH THEY WERE NOT DESIGNED, OR (IV) IMPROPER STORAGE AND HANDLING OF THE PRODUCTS. Unless otherwise expressly stated on the Product or in the documentation accompanying the Product, the Product is intended for research only and is not to be used for any other purpose, including without limitation, unauthorized commercial uses, in vitro diagnostic uses, ex vivo or in vivo therapeutic uses, or any type of consumption by or application to human or animals.