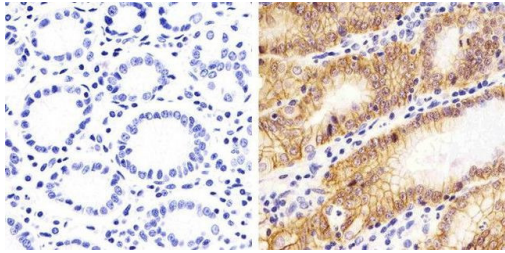


# Claudin 18 Polyclonal Antibody

Product Details	
Size	100 µg
Species Reactivity	Human, Mouse
Published Species	Rat, Human
Host/Isotype	Rabbit / IgG
Class	Polyclonal
Type	Antibody
Conjugate	Unconjugated
Immunogen	Synthetic peptide derived from an internal region of the human Claudin-18 protein, which differs from mouse by one conservative amino acid replacement.
Form	Liquid
Concentration	0.25 mg/mL
Purification	Antigen affinity chromatography
Storage buffer	PBS, pH 7.4
Contains	0.1% sodium azide
Storage conditions	-20°C
RRID	AB_2533383

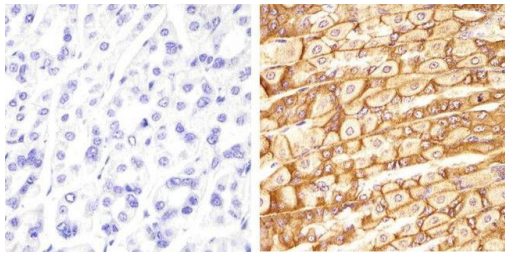
Applications	Tested Dilution	Publications
Western Blot (WB)	Assay-dependent	2 Publications
Immunohistochemistry (IHC)	-	1 Publication
Immunohistochemistry (Paraffin) (IHC (P))	1:20-1:200	-
Immunohistochemistry (Frozen) (IHC (F))	Assay-dependent	-
Immunocytochemistry (ICC/IF)	-	1 Publication

**Claudin 18 Antibody (38-8100) in IHC (P)**



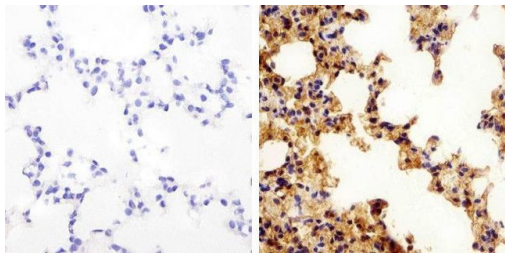
Immunohistochemistry analysis of Claudin-18 (Mid) showing staining in the membrane and cytoplasm of paraffin-embedded human stomach tissue (right) compared to a negative control without primary antibody (left). To expose target proteins, antigen retrieval was performed using 10mM sodium citrate (pH 6.0), microwaved for 8-15 min. Following antigen retrieval, tissues were blocked in 3% H2O2-methanol for 15 min at room temperature, washed with ddH2O and PBS, and then probed with a Claudin-18 (Mid) Rabbit Polyclonal Antibody (Product # 38-8100) diluted in 3% BSA-PBS at a dilution of 1:100 overnight at 4°C in a humidified chamber. Tissues were washed extensively in PBST and detection was performed using an HRP-conjugated secondary antibody followed by colorimetric detection using a DAB kit. Tissues were counterstained with hematoxylin and dehydrated with ethanol and xylene to prep for mounting.

**Claudin 18 Antibody (38-8100) in IHC (P)**



Immunohistochemistry analysis of Claudin-18 (Mid) showing staining in the membrane and cytoplasm of paraffin-embedded mouse stomach tissue (right) compared to a negative control without primary antibody (left). To expose target proteins, antigen retrieval was performed using 10mM sodium citrate (pH 6.0), microwaved for 8-15 min. Following antigen retrieval, tissues were blocked in 3% H2O2-methanol for 15 min at room temperature, washed with ddH2O and PBS, and then probed with a Claudin-18 (Mid) Rabbit Polyclonal Antibody (Product # 38-8100) diluted in 3% BSA-PBS at a dilution of 1:100 overnight at 4°C in a humidified chamber. Tissues were washed extensively in PBST and detection was performed using an HRP-conjugated secondary antibody followed by colorimetric detection using a DAB kit. Tissues were counterstained with hematoxylin and dehydrated with ethanol and xylene to prep for mounting.

**Claudin 18 Antibody (38-8100) in IHC (P)**



Immunohistochemistry analysis of Claudin-18 (Mid) showing staining in the membrane and cytoplasm of paraffin-embedded mouse lung tissue (right) compared to a negative control without primary antibody (left). To expose target proteins, antigen retrieval was performed using 10mM sodium citrate (pH 6.0), microwaved for 8-15 min. Following antigen retrieval, tissues were blocked in 3% H2O2-methanol for 15 min at room temperature, washed with ddH2O and PBS, and then probed with a Claudin-18 (Mid) Rabbit Polyclonal Antibody (Product # 38-8100) diluted in 3% BSA-PBS at a dilution of 1:20 overnight at 4°C in a humidified chamber. Tissues were washed extensively in PBST and detection was performed using an HRP-conjugated secondary antibody followed by colorimetric detection using a DAB kit. Tissues were counterstained with hematoxylin and dehydrated with ethanol and xylene to prep for mounting.

[View more figures on thermofisher.com](#)

Western Blot (2)

<p>American journal of physiology. Lung cellular and molecular physiology</p> <p><b>Hypoxia increases transepithelial electrical conductance and reduces occludin at the plasma membrane in alveolar epithelial cells via PKC- and PP2A pathway.</b></p> <p>Authors: Caraballo JC,Yshii C,Butti ML,Westphal W,Borcherding JA,Allamargot C,Comellas AP</p>	<p>Year 2011</p> <p>Species Rat</p>
<p>The Journal of biological chemistry</p> <p><b>Allogeneic human mesenchymal stem cells restore epithelial protein permeability in cultured human alveolar type II cells by secretion of angiopoietin-1.</b></p> <p>Authors: Fang X,Neyrinck AP,Matthay MA,Lee JW</p>	<p>Year 2010</p> <p>Species Human</p>

Immunohistochemistry (1)

<p>Clinical cancer research : an official journal of the American Association for Cancer Research</p> <p><b>Claudin-18 splice variant 2 is a pan-cancer target suitable for therapeutic antibody development.</b></p> <p>Authors: Sahin U,Koslowski M,Dhaene K,Usener D,Brandenburg G,Seitz G,Huber C,Türeci O</p>	<p>Year 2008</p> <p>Species Human</p>
--	---

Immunocytochemistry (1)

<p>Tissue barriers</p> <p><b>Asymmetric distribution of dynamin-2 and -catenin relative to tight junction spikes in alveolar epithelial cells.</b></p> <p>"38-8100 was used in Immunocytochemistry-immunofluorescence to suggest a novel role for dynamin-2 in tight junction spike formation by reorienting junction-associated actin."</p> <p>Authors: Lynn KS,Easley KF,Martinez FJ,Reed RC,Schlingmann B,Koval M</p>	<p>Year 2021</p> <p>Species Rat</p> <p>Dilution 1:125</p>
--	---

For Research Use Only. Not for use in diagnostic procedures. Not for resale without express authorization. Products are warranted to operate or perform substantially in conformance with published Product specifications in effect at the time of sale, as set forth in the Production documentation, specifications and/or accompanying package inserts ("Documentation"). No claim of suitability for use in applications regulated by FDA is made. The warranty provided herein is valid only when used by properly trained individuals. Unless otherwise stated in the Documentation, this warranty is limited to one year from date of shipment when the Product is subjected to normal, proper and intended usage. This warranty does not extend to anyone other than the Buyer. Any model or sample furnished to Buyer is merely illustrative of the general type and quality of goods and does not represent that any Product will conform to such model or sample. NO OTHER WARRANTIES, EXPRESS OR IMPLIED, ARE GRANTED INCLUDING WITHOUT LIMITATION, IMPLIED WARRANTIES OF MERCHANTABILITY, FITNESS FOR ANY PARTICULAR PURPOSE, OR NON-INFRINGEMENT. BUYER'S EXCLUSIVE REMEDY FOR NON-CONFORMING PRODUCTS DURING THE WARRANTY PERIOD IS LIMITED TO REPAIR, REPLACEMENT OF OR REFUND FOR THE NON-CONFORMING PRODUCT(S) AT SELLER'S SOLE OPTION. THERE IS NO OBLIGATION TO REPAIR, REPLACE OR REFUND FOR PRODUCTS AS THE RESULT OF (I) ACCIDENT, DISASTER OR EVENT OF FORCE MAJEURE, (II) MISUSE, FAULT OR NEGLIGENCE OF OR BY BUYER, (III) USE OF THE PRODUCTS IN A MANNER FOR WHICH THEY WERE NOT DESIGNED, OR (IV) IMPROPER STORAGE AND HANDLING OF THE PRODUCTS. Unless otherwise expressly stated on the Product or in the documentation accompanying the Product, the Product is intended for research only and is not to be used for any other purpose, including without limitation, unauthorized commercial uses, in vitro diagnostic uses, ex vivo or in vivo therapeutic uses, or any type of consumption by or application to human or animals.