

TCL1A Monoclonal Antibody (1 21)

Product Details	
Size	100 µg
Species Reactivity	Human
Published Species	Human
Host/Isotype	Mouse / IgG2b, kappa
Class	Monoclonal
Type	Antibody
Clone	1 21
Conjugate	Unconjugated
Immunogen	Recombinant full-length human TCL-1A protein
Form	Liquid
Concentration	0.5 mg/mL
Storage conditions	-20°C
RRID	AB_2533415

Applications	Tested Dilution	Publications
Western Blot (WB)	2 µg/mL	1 Publication
Immunohistochemistry (IHC)	Assay-dependent	1 Publication
Immunocytochemistry (ICC/IF)	5 µg/mL	-
ELISA (ELISA)	Assay-dependent	-
Immunoprecipitation (IP)	Assay-dependent	-

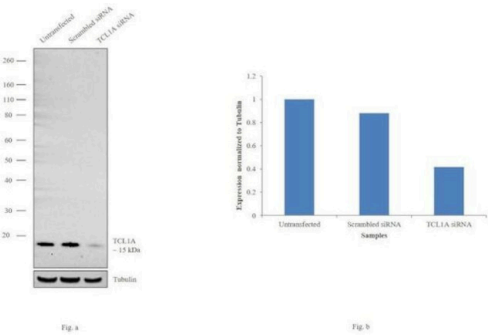
Product Images For TCL1A Monoclonal Antibody (1 21)

TCL1A Antibody (39-4800) in ICC/IF

Immunofluorescence analysis of TCL1A was performed using 90% confluent log phase KARPAS 299 cells. The cells were fixed with 4% paraformaldehyde for 10 minutes, permeabilized with 0.1% Triton™ X-100 for 15 minutes, and blocked with 1% BSA for 1 hour at room temperature. The cells were labeled with TCL1A Monoclonal Antibody (1 21) (Product # 39-4800) at 5 µg/mL in 0.1% BSA, incubated at 4 degree Celsius overnight and then labeled with Goat anti-Mouse IgG (H+L) Superclonal™ Secondary Antibody, Alexa Fluor® 488 conjugate (Product # A28175) at a dilution of 1:2000 for 45 minutes at room temperature (Panel a: green). Nuclei (Panel b: blue) were stained with SlowFade® Gold Antifade Mountant with DAPI (Product # S36938). F-actin (Panel c: red) was stained with Rhodamine Phalloidin (Product # R415, 1:300). Panel d represents the merged image showing cytoplasmic localization. Panel e represents control cells with no primary antibody to assess background. The images were captured at 60X magnification.

TCL1A Antibody (39-4800)

Antibody specificity was demonstrated by siRNA mediated knockdown of target protein. Raji cells were transfected with TCL1A siRNA and loss of signal was observed in Western Blot using TCL1A Monoclonal Antibody (Product # 39-4800). {KD}



TCL1A Antibody (39-4800) in ICC/IF

Immunofluorescence analysis of TCL1A was performed using 70% confluent log phase RAMOS cells. The cells were fixed with 4% paraformaldehyde for 10 minutes, permeabilized with 0.1% Triton™ X-100 for 10 minutes, and blocked with 1% BSA for 1 hour at room temperature. The cells were labeled with TCL1A (1 21) Mouse Monoclonal Antibody (Product # 39-4800) at 2µg/mL in 0.1% BSA and incubated for 3 hours at room temperature and then labeled with Goat anti-Mouse IgG (H+L) Superclonal™ Secondary Antibody, Alexa Fluor® 488 conjugate (Product # A28175) at a dilution of 1:2000 for 45 minutes at room temperature (Panel a: green). Nuclei (Panel b: blue) were stained with SlowFade® Gold Antifade Mountant with DAPI (Product # S36938). F-actin (Panel c: red) was stained with Alexa Fluor® 555 Rhodamine Phalloidin (Product # R415, 1:300). Panel d represents the merged image showing cytoplasmic localization. Panel e shows the no primary antibody control. The images were captured at 60X magnification.

View more figures on thermofisher.com

2 References

Western Blot (1)

Journal of proteome research

Proteomics-based strategies to identify proteins relevant to chronic lymphocytic leukemia.

"39-4800 was used in western blot to identify proteins associated with chronic lymphocytic leukemia"

Authors: Alsagaby SA,Khanna S,Hart KW,Pratt G,Fegan C,Pepper C,Brewis IA,Brennan P

Year
2014

Species
Human

Dilution
1:1000

Immunohistochemistry (1)

Modern pathology : an official journal of the United States and Canadian Academy of Pathology, Inc

E2A-positive gastric MALT lymphoma has weaker plasmacytoid infiltrates and stronger expression of the memory B-cell-associated miR-223: possible correlation with stage and treatment response.

Authors: Liu TY,Chen SU,Kuo SH,Cheng AL,Lin CW

Year
2010

Species
Human

Dilution
1:20

For Research Use Only. Not for use in diagnostic procedures. Not for resale without express authorization. Products are warranted to operate or perform substantially in conformance with published Product specifications in effect at the time of sale, as set forth in the Production documentation, specifications and/or accompanying package inserts ("Documentation"). No claim of suitability for use in applications regulated by FDA is made. The warranty provided herein is valid only when used by properly trained individuals. Unless otherwise stated in the Documentation, this warranty is limited to one year from date of shipment when the Product is subjected to normal, proper and intended usage. This warranty does not extend to anyone other than the Buyer. Any model or sample furnished to Buyer is merely illustrative of the general type and quality of goods and does not represent that any Product will conform to such model or sample. NO OTHER WARRANTIES, EXPRESS OR IMPLIED, ARE GRANTED INCLUDING WITHOUT LIMITATION, IMPLIED WARRANTIES OF MERCHANTABILITY, FITNESS FOR ANY PARTICULAR PURPOSE, OR NON INFRINGEMENT. BUYER'S EXCLUSIVE REMEDY FOR NON-CONFORMING PRODUCTS DURING THE WARRANTY PERIOD IS LIMITED TO REPAIR, REPLACEMENT OF OR REFUND FOR THE NON-CONFORMING PRODUCT(S) AT SELLER'S SOLE OPTION. THERE IS NO OBLIGATION TO REPAIR, REPLACE OR REFUND FOR PRODUCTS AS THE RESULT OF (I) ACCIDENT, DISASTER OR EVENT OF FORCE MAJEURE, (II) MISUSE, FAULT OR NEGLIGENCE OF OR BY BUYER, (III) USE OF THE PRODUCTS IN A MANNER FOR WHICH THEY WERE NOT DESIGNED, OR (IV) IMPROPER STORAGE AND HANDLING OF THE PRODUCTS. Unless otherwise expressly stated on the Product or in the documentation accompanying the Product, the Product is intended for research only and is not to be used for any other purpose, including without limitation, unauthorized commercial uses, in vitro diagnostic uses, ex vivo or in vivo therapeutic uses, or any type of consumption by or application to human or animals.