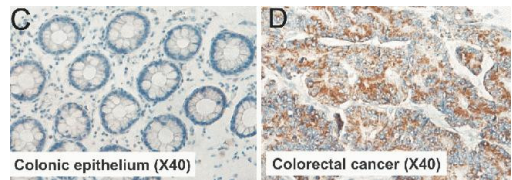


KLF6 Monoclonal Antibody (9A2)

Product Details	
Size	100 µg
Species Reactivity	Human
Published Species	Rat, Human, Mouse
Host/Isotype	Mouse / IgG2a, kappa
Class	Monoclonal
Type	Antibody
Clone	9A2
Conjugate	Unconjugated
Immunogen	Recombinant protein derived from the internal region of the human KLF6 splice variant 1
Form	Liquid
Concentration	0.5 mg/mL
Purification	Protein A
Storage buffer	PBS, pH 7.4
Contains	0.1% sodium azide
Storage conditions	-20°C
RRID	AB_2533431

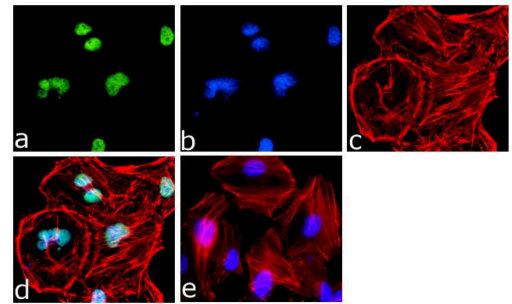
Applications	Tested Dilution	Publications
Western Blot (WB)	Assay-dependent	3 Publications
Immunohistochemistry (IHC)	Assay-dependent	1 Publication
Immunocytochemistry (ICC/IF)	1 µg/mL	-
ELISA (ELISA)	Assay-dependent	-
ChIP assay (ChIP)	-	1 Publication

Product Images For KLF6 Monoclonal Antibody (9A2)



KLF6 Antibody (39-6900) in IHC

Immunohistochemical staining of human (C) colonic epithelium and (D) colorectal cancer tissues using Zymed (R) Ms anti-KLF6 sv1 (Product # 39-6900). Image courtesy of Goutham Narla, MD, PhD, Mount Sinai School of Medicine, NY.



KLF6 Antibody (39-6900) in ICC/IF

Immunofluorescence analysis of KLF6 SV1 was done on 70% confluent log phase HeLa cells. The cells were fixed with 4% paraformaldehyde for 15 minutes, permeabilized with 0.25% Triton™ X-100 for 10 minutes, and blocked with 5% BSA for 1 hour at room temperature. The cells were labeled with KLF6 SV1 Mouse Monoclonal Antibody (Product # 39-6900) at 1 µg/mL in 1% BSA and incubated for 3 hours at room temperature and then labeled with Goat anti-Mouse IgG (H+L) Superclonal™ Secondary Antibody, Alexa Fluor® 488 conjugate (Product # A28175) at a dilution of 1:2000 for 45 minutes at room temperature (Panel a: green). Nuclei (Panel b: blue) were stained with SlowFade® Gold Antifade Mountant with DAPI (Product # S36938). F-actin (Panel c: red) was stained with Alexa Fluor® 555 Rhodamine Phalloidin (Product # R415, 1:300). Panel d is a merged image showing nuclear localization. Panel e is a no primary antibody control. The images were captured at 60X magnification.

View more figures on thermofisher.com

Western Blot (3)

<p>Cancer management and research</p> <p>KLF6-SV1 is a new prognostic biomarker in postoperative patients with non-small cell lung cancer.</p> <p>"Published figure using KLF6 monoclonal antibody (Product # 39-6900) in Immunohistochemistry"</p> <p>Authors: Zhang N,Li Z,Xiao W,Yang F,Gao W,Sun ZG</p>	<p>Year</p> <p>2022</p> <p>Species</p> <p>Human</p> <p>Dilution</p> <p>1:500</p>
<p>Oncogene</p> <p>A novel KLF6-Rho GTPase axis regulates hepatocellular carcinoma cell migration and dissemination.</p> <p>"Published figure using KLF6 monoclonal antibody (Product # 39-6900) in Western Blot"</p> <p>Authors: Ahronian LG,Zhu LJ,Chen YW,Chu HC,Klimstra DS,Lewis BC</p>	<p>Year</p> <p>2016</p>

[View more WB references on thermofisher.com](#)

Immunohistochemistry (1)

<p>Cancer management and research</p> <p>KLF6-SV1 is a new prognostic biomarker in postoperative patients with non-small cell lung cancer.</p> <p>"Published figure using KLF6 monoclonal antibody (Product # 39-6900) in Immunohistochemistry"</p> <p>Authors: Zhang N,Li Z,Xiao W,Yang F,Gao W,Sun ZG</p>	<p>Year</p> <p>2022</p> <p>Species</p> <p>Human</p> <p>Dilution</p> <p>1:500</p>
--	--

ChIP assay (1)

<p>Hepatology (Baltimore, Md.)</p> <p>Reduced hepatic stellate cell expression of Kruppel-like factor 6 tumor suppressor isoforms amplifies fibrosis during acute and chronic rodent liver injury.</p> <p>Authors: Ghiassi-Nejad Z,Hernandez-Gea V,Woodrell C,Lang UE,Dumic K,Kwong A,Friedman SL</p>	<p>Year</p> <p>2013</p> <p>Species</p> <p>Mouse Rat</p>
--	---

More applications with references on thermofisher.com

For Research Use Only. Not for use in diagnostic procedures. Not for resale without express authorization. Products are warranted to operate or perform substantially in conformance with published Product specifications in effect at the time of sale, as set forth in the Production documentation, specifications and/or accompanying package inserts ("Documentation"). No claim of suitability for use in applications regulated by FDA is made. The warranty provided herein is valid only when used by properly trained individuals. Unless otherwise stated in the Documentation, this warranty is limited to one year from date of shipment when the Product is subjected to normal, proper and intended usage. This warranty does not extend to anyone other than the Buyer. Any model or sample furnished to Buyer is merely illustrative of the general type and quality of goods and does not represent that any Product will conform to such model or sample. NO OTHER WARRANTIES, EXPRESS OR IMPLIED, ARE GRANTED INCLUDING WITHOUT LIMITATION, IMPLIED WARRANTIES OF MERCHANTABILITY, FITNESS FOR ANY PARTICULAR PURPOSE, OR NON INFRINGEMENT. BUYER'S EXCLUSIVE REMEDY FOR NON-CONFORMING PRODUCTS DURING THE WARRANTY PERIOD IS LIMITED TO REPAIR, REPLACEMENT OF OR REFUND FOR THE NON-CONFORMING PRODUCT(S) AT SELLER'S SOLE OPTION. THERE IS NO OBLIGATION TO REPAIR, REPLACE OR REFUND FOR PRODUCTS AS THE RESULT OF (i) ACCIDENT, DISASTER OR EVENT OF FORCE MAJEURE, (ii) MISUSE, FAULT OR NEGLIGENCE OF OR BY BUYER, (iii) USE OF THE PRODUCTS IN A MANNER FOR WHICH THEY WERE NOT DESIGNED, OR (iv) IMPROPER STORAGE AND HANDLING OF THE PRODUCTS. Unless otherwise expressly stated on the Product or in the documentation accompanying the Product, the Product is intended for research only and is not to be used for any other purpose, including without limitation, unauthorized commercial uses, in vitro diagnostic uses, ex vivo or in vivo therapeutic uses, or any type of consumption by or application to human or animals.