

# GJA10 Polyclonal Antibody

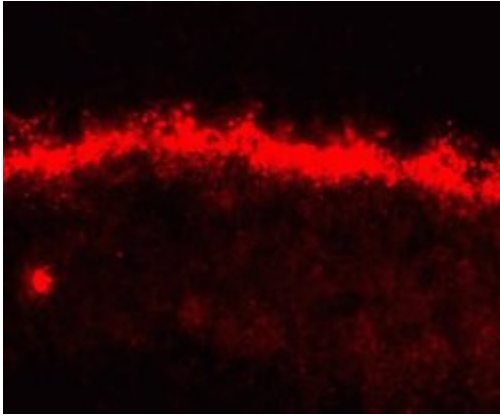
Product Details	
Size	100 µg
Species Reactivity	Human, Mouse
Published Species	Rabbit, Human, Mouse
Host/Isotope	Rabbit / IgG
Class	Polyclonal
Type	Antibody
Conjugate	Unconjugated
Immunogen	Synthetic peptide derived from an internal region of the mouse, rat, Chinese hamster and golden hamster connexin 57 (Cx57) proteins
Form	Liquid
Concentration	0.25 mg/mL
Purification	Antigen affinity chromatography
Storage buffer	PBS, pH 7.4
Contains	0.1% sodium azide
Storage Conditions	-20°C
RRID	AB_2533469

Applications	Tested Dilution	Publications
Immunofluorescence (IF)	Assay Dependent	2 Publications
Immunohistochemistry (Frozen) (IHC (F))	Assay Dependent	-
Immunohistochemistry (Paraffin) (IHC (P))	1:10-1:100	-
Western Blot (WB)	Assay Dependent	2 Publications
Immunohistochemistry (IHC)	-	2 Publications
Immunomicroscopy (IM)	-	1 Publication

## Product Specific Information

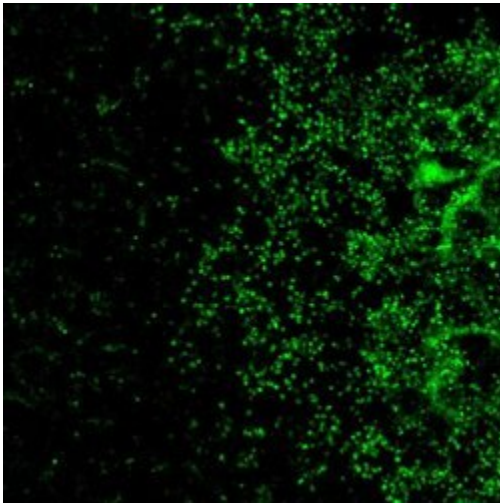
40-5000 was used in immunofluorescence analysis of Connexin57 (Cx57) on sections of adult mouse retina.

## Product Images For GJA10 Polyclonal Antibody



### **GJA10 Antibody (40-5000) in IF**

Immunofluorescent staining of frozen mouse retina using Zymed Rb anti-Connexin 57 (Mid) (Product # 40-5000). Image courtesy of James I. Nagy, PhD, University of Manitoba, Canada.



### **GJA10 Antibody (40-5000) in IHC**

Immunofluorescence analysis of Connexin57 (Cx57) was performed on sections of adult mouse retina. Tissue sections on slides were probed for 24 h at 4°C in a humidified chamber with rabbit polyclonal anti-Cx57 (Product # 40-5000) at an antibody concentration of 1-2 µg/mL diluted in 50 mM Tris-HCl, pH 7.4, containing 1.5% NaCl, 0.3% Triton X-100 (TBST) and 4% normal goat serum. After overnight incubation, sections were washed extensively for 1 h in TBST, and detection of primary antibody was performed for 1.5 h at room temperature with AlexaFluor-488-conjugated donkey anti-rabbit diluted 1:600 in TBST. Sections were then washed in TBST, then in TBS (without triton) and then coverslipped with anti-fade medium. Images were taken on a Zeiss 710 confocal microscope at x40 objective magnification, and show immunofluorescence labelling of Cx57 localized at gap junctions between processes of horizontal cells in the outer plexiform layer of adult mouse retina. Data courtesy of Dr. James Nagy's lab.

---

[View more figures on thermofisher.com](https://www.thermofisher.com)

Immunofluorescence (2)

The Journal of comparative neurology

**Connexin 57 is expressed by the axon terminal network of B-type horizontal cells in the rabbit retina.**

"40-5000 was used in immunohistochemistry to study the expression of connexin 57 in rabbit retina B-type horizontal cells"

Authors: Pan F,Keung J,Kim IB,Snuggs MB,Mills SL,O'Brien J,Massey SC

**Species**  
Human  
Rabbit  
Not Applicable

**Dilution**  
Not Cited  
Not Cited  
Not Cited

**Year**  
2012

Neuroscience

**Lack of photoreceptor signaling alters the expression of specific synaptic proteins in the retina.**

Authors: Kihara AH,Santos TO,Paschon V,Matos RJ,Britto LR

**Species**  
Mouse

**Dilution**  
1:100-1:250

**Year**  
2008

Immunohistochemistry (2)

The Journal of comparative neurology

**Connexin 57 is expressed by the axon terminal network of B-type horizontal cells in the rabbit retina.**

"40-5000 was used in immunohistochemistry to study the expression of connexin 57 in rabbit retina B-type horizontal cells"

Authors: Pan F,Keung J,Kim IB,Snuggs MB,Mills SL,O'Brien J,Massey SC

**Species**  
Human  
Rabbit  
Not Applicable

**Dilution**  
Not Cited  
Not Cited  
Not Cited

**Year**  
2012

Neuroscience

**Spatial relationships of connexin36, connexin57 and zonula occludens-1 in the outer plexiform layer of mouse retina.**

"40-5000 was used in immunohistochemistry and western blot to investigate connexin57 expression in the mouse retina"

Authors: Ciolofan C,Lynn BD,Wellershaus K,Willecke K,Nagy JI

**Species**  
Not Applicable

**Dilution**  
2 µg/ml

**Year**  
2007

More applications with references on thermofisher.com

IM (1) WB (2)

For Research Use Only. Not for use in diagnostic procedures. Not for resale without express authorization. Products are warranted to operate or perform substantially in conformance with published Product specifications in effect at the time of sale, as set forth in the Production documentation, specifications and/or accompanying package inserts ("Documentation"). No claim of suitability for use in applications regulated by FDA is made. The warranty provided herein is valid only when used by properly trained individuals. Unless otherwise stated in the Documentation, this warranty is limited to one year from date of shipment when the Product is subjected to normal, proper and intended usage. This warranty does not extend to anyone other than the Buyer. Any model or sample furnished to Buyer is merely illustrative of the general type and quality of goods and does not represent that any Product will conform to such model or sample. NO OTHER WARRANTIES, EXPRESS OR IMPLIED, ARE GRANTED INCLUDING WITHOUT LIMITATION, IMPLIED WARRANTIES OF MERCHANTABILITY, FITNESS FOR ANY PARTICULAR PURPOSE, OR NON INFRINGEMENT. BUYER'S EXCLUSIVE REMEDY FOR NON-CONFORMING PRODUCTS DURING THE WARRANTY PERIOD IS LIMITED TO REPAIR, REPLACEMENT OF OR REFUND FOR THE NON-CONFORMING PRODUCT(S) AT SELLER'S SOLE OPTION. THERE IS NO OBLIGATION TO REPAIR, REPLACE OR REFUND FOR PRODUCTS AS THE RESULT OF (I) ACCIDENT, DISASTER OR EVENT OF FORCE MAJEURE, (II) MISUSE, FAULT OR NEGLIGENCE OF OR BY BUYER, (III) USE OF THE PRODUCTS IN A MANNER FOR WHICH THEY WERE NOT DESIGNED, OR (IV) IMPROPER STORAGE AND HANDLING OF THE PRODUCTS. Unless otherwise expressly stated on the Product or in the documentation accompanying the Product, the Product is intended for research only and is not to be used for any other purpose, including without limitation, unauthorized commercial uses, in vitro diagnostic uses, ex vivo or in vivo therapeutic uses, or any type of consumption by or application to human or animals.