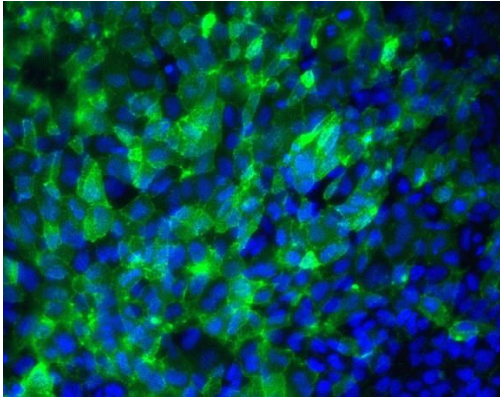


# TRA-1-60 Monoclonal Antibody (cl.A)

| Product Details    |   |
|--------------------|---|
| Size               | 100 µg  |
| Species Reactivity | Human   |
| Published Species  | Human, Mouse                                  |
| Host/Isotope       | Mouse / IgM                                   |
| Class              | Monoclonal                                    |
| Type               | Antibody                                      |
| Clone              | cl.A  |
| Conjugate          | Unconjugated                                  |
| Immunogen          | 2102Ep cl.2A6 human embryonal carcinoma cells |
| Form               | Liquid  |
| Concentration      | 0.5 mg/mL                                     |
| Purification       | Affinity chromatography - MBP                 |
| Storage buffer     | PBS, pH 7.4                                   |
| Contains           | 0.1% sodium azide                             |
| Storage Conditions | -20°C   |
| RRID               | AB_2533494                                    |

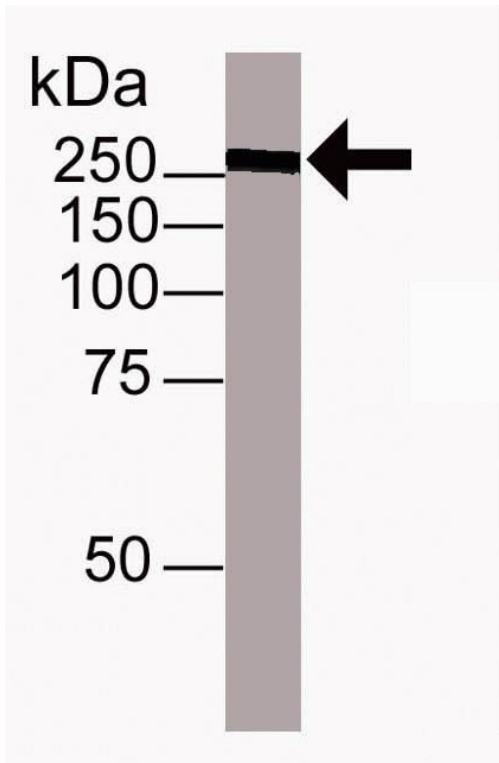
| Applications               | Tested | Dilution        | Published      |
|----------------------------|--------|-----------------|----------------|
| Immunocytochemistry (ICC)  | ✓      | Assay Dependent | 3 Publications |
| Immunofluorescence (IF)    | ✓      | Assay Dependent | 6 Publications |
| Western Blot (WB)          | ✓      | Assay Dependent | 1 Publication  |
| Flow Cytometry (Flow)      | -      |                 | 2 Publications |
| Immunohistochemistry (IHC) | -      |                 | 1 Publication  |

## Product Images For TRA-1-60 Monoclonal Antibody (cl.A)



### TRA-1-60 Antibody (41-1000) in IF

Indirect immunofluorescent analysis of SHEFF4 human ES cells using Zymed Ms anti-TRA-1-60 (Product # 41-1000). Image courtesy of Peter Andrews, Ph.D., University of Sheffield, Sheffield, UK.



### TRA-1-60 Antibody (41-1000) in WB

Western blot analysis of human embryonal carcinoma EC1003.7 cell lysates using Zymed (R) Ms anti-TRA-1-60 (Product # 41-1000).

[View more figures on thermofisher.com](https://www.thermofisher.com)

## 13 References

### Immunocytochemistry (3)

Frontiers in cellular neuroscience

#### Gene expression profiling for human iPS-derived motor neurons from sporadic ALS patients reveals a strong association between mitochondrial functions and neurodegeneration.

"41-1000 was used in immunocytochemistry to research human iPS-derived motor neurons from sporadic ALS patients for gene expression and a strong association between neurodegeneration and mitochondrial functions"

Authors: Alves CJ,Dariolli R,Jorge FM,Monteiro MR,Maximino JR,Martins RS,Strauss BE,Krieger JE,Callegaro D,Chadi G

**Species**  
Not Applicable

**Dilution**  
Not Cited

**Year**  
2015

Disease models and mechanisms

#### ALS mutant FUS proteins are recruited into stress granules in induced pluripotent stem cell-derived motoneurons.

"41-1000 was used in immunocytochemistry to study induced pluripotent stem cells derived from patients with amyotrophic lateral sclerosis"

Authors: Lenzi J,De Santis R,de Turris V,Morlando M,Laneve P,Calvo A,Caliendo V,Chiò A,Rosa A,Bozzoni I

**Species**  
Human  
Not Applicable

**Dilution**  
Not Cited  
1:100

**Year**  
2015

[View more ICC references on thermofisher.com](#)

### Immunofluorescence (6)

Frontiers in cellular neuroscience

#### Gene expression profiling for human iPS-derived motor neurons from sporadic ALS patients reveals a strong association between mitochondrial functions and neurodegeneration.

"41-1000 was used in immunocytochemistry to research human iPS-derived motor neurons from sporadic ALS patients for gene expression and a strong association between neurodegeneration and mitochondrial functions"

Authors: Alves CJ,Dariolli R,Jorge FM,Monteiro MR,Maximino JR,Martins RS,Strauss BE,Krieger JE,Callegaro D,Chadi G

**Species**  
Not Applicable

**Dilution**  
Not Cited

**Year**  
2015

Disease models and mechanisms

#### ALS mutant FUS proteins are recruited into stress granules in induced pluripotent stem cell-derived motoneurons.

"41-1000 was used in immunocytochemistry to study induced pluripotent stem cells derived from patients with amyotrophic lateral sclerosis"

Authors: Lenzi J,De Santis R,de Turris V,Morlando M,Laneve P,Calvo A,Caliendo V,Chiò A,Rosa A,Bozzoni I

**Species**  
Human  
Not Applicable

**Dilution**  
Not Cited  
1:100

**Year**  
2015

[View more IF references on thermofisher.com](#)

### More applications with references on thermofisher.com

**WB (1)** **Flow (2)** **IHC (1)**

For Research Use Only. Not for use in diagnostic procedures. Not for resale without express authorization. Products are warranted to operate or perform substantially in conformance with published Product specifications in effect at the time of sale, as set forth in the Production documentation, specifications and/or accompanying package inserts ("Documentation"). No claim of suitability for use in applications regulated by FDA is made. The warranty provided herein is valid only when used by properly trained individuals. Unless otherwise stated in the Documentation, this warranty is limited to one year from date of shipment when the Product is subjected to normal, proper and intended usage. This warranty does not extend to anyone other than the Buyer. Any model or sample furnished to Buyer is merely illustrative of the general type and quality of goods and does not represent that any Product will conform to such model or sample. NO OTHER WARRANTIES, EXPRESS OR IMPLIED, ARE GRANTED INCLUDING WITHOUT LIMITATION, IMPLIED WARRANTIES OF MERCHANTABILITY, FITNESS FOR ANY PARTICULAR PURPOSE, OR NON-INFRINGEMENT. BUYER'S EXCLUSIVE REMEDY FOR NON-CONFORMING PRODUCTS DURING THE WARRANTY PERIOD IS LIMITED TO REPAIR, REPLACEMENT OF OR REFUND FOR THE NON-CONFORMING PRODUCT(S) AT SELLER'S SOLE OPTION. THERE IS NO OBLIGATION TO REPAIR, REPLACE OR REFUND FOR PRODUCTS AS THE RESULT OF (I) ACCIDENT, DISASTER OR EVENT OF FORCE MAJEURE, (II) MISUSE, FAULT OR NEGLIGENCE OF OR BY BUYER, (III) USE OF THE PRODUCTS IN A MANNER FOR WHICH THEY WERE NOT DESIGNED, OR (IV) IMPROPER STORAGE AND HANDLING OF THE PRODUCTS. Unless otherwise expressly stated on the Product or in the documentation accompanying the Product, the Product is intended for research only and is not to be used for any other purpose, including without limitation, unauthorized commercial uses, in vitro diagnostic uses, ex vivo or in vivo therapeutic uses, or any type of consumption by or application to human or animals.