

CD11b Monoclonal Antibody (M1/70), Brilliant Violet™ 650, eBioscience™

Product Details	
Size	25 µg
Species Reactivity	Mouse
Host/Isotype	Rat / IgG2b, kappa
Recommended Isotype Control	Rat IgG2b kappa Isotype Control (eB149/10H5), Brilliant Violet™ 650, eBioscience™
Class	Monoclonal
Type	Antibody
Clone	M1/70
Conjugate	Brilliant Violet™ 650
Excitation/Emission Max	407/646 nm
Form	Liquid
Concentration	0.2 mg/mL
Purification	Affinity chromatography
Storage buffer	PBS, pH 7.2, with BSA
Contains	0.09% sodium azide
Storage conditions	4° C, store in dark, DO NOT FREEZE!
RRID	AB_2925669

Applications	Tested Dilution	Publications
Flow Cytometry (Flow)	0.125 µg/test	-

Product Specific Information

Description: The M1/70 monoclonal antibody reacts with mouse CD11b, the 165-170 kDa integrin alphaM. CD11b non-covalently associates with CD18 to form alphaMbeta2 integrin (Mac-1) and binds to CD54 (ICAM-1), C3bi, and fibrinogen. Mac-1 is expressed by macrophages, NK cells, granulocytes, activated lymphocytes and mouse B-1 cells in the peritoneal cavity. M1/70 is also cross-reactive to human CD11b, and can be used for the detection of this antigen on human peripheral blood monocytes, granulocytes, and a subset of NK cells. Through interactions with its ligands, CD11b participates in adhesive cell interactions.^{^M}

^{^M}

Applications Reported: This M1/70 antibody has been reported for use in flow cytometric analysis.^{^M}

^{^M}

Applications Tested: This M1/70 antibody has been tested by flow cytometric analysis of mouse bone marrow cells. This may be used at less than or equal to 0.125 µg per test. A test is defined as the amount (µg) of antibody that will stain a cell sample in a final volume of 100 µL. Cell number should be determined empirically but can range from 10^{^5} to 10^{^8} cells/test. It is recommended that the antibody be carefully titrated for optimal performance in the assay of interest.^{^M}

^{^M}

Brilliant Violet™ 650 (BV650) is a tandem dye that emits at 649 nm and is intended for use on cytometers equipped with a violet (405 nm) laser. Please make sure that your instrument is capable of detecting this fluorochrome.^{^M}

^{^M}

When using two or more Super Bright, Brilliant Violet™, Brilliant Ultra Violet™, or other polymer dye-conjugated antibodies in a staining panel, it is recommended to use Super Bright Complete Staining Buffer (Product # SB-4401-42) or Brilliant Stain Buffer™ (Product # 00-4409-75) to minimize any non-specific polymer interactions. Please refer to the datasheet for Super Bright Staining Buffer or Brilliant Stain Buffer for more information.^{^M}

^M

Light sensitivity: This tandem dye is sensitive to photo-induced oxidation. Please protect this vial and stained samples from light.^M

^M

Fixation: Samples can be stored in IC Fixation Buffer (Product # 00-8222-49) (100 µL of cell sample + 100 µL of IC Fixation Buffer) or 1-step Fix/Lyse Solution (Product # 00-5333-54) for up to 3 days in the dark at 4°C with minimal impact on brightness and FRET efficiency/compensation. Some generalizations regarding fluorophore performance after fixation can be made, but clone-specific performance should be determined empirically.^M

^M

Our internal testing suggests that Brilliant Violet™ 650 (BV650) is not compatible with methanol-based fixation.^M

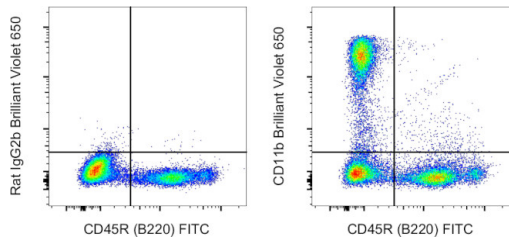
^M

Excitation: 407 nm; Emission: 649 nm; Laser: Violet Laser.^M

^M

BRILLIANT VIOLET™ is a trademark or registered trademark of Becton, Dickinson and Company or its affiliates, and is used under license. Powered by Sirigen™.

Product Images For CD11b Monoclonal Antibody (M1/70), Brilliant Violet™ 650, eBioscience™



CD11b Antibody (416-0112-80) in Flow

BALB/c mouse bone marrow cells were stained with CD45R (B220) Monoclonal Antibody, FITC (Product # 11-0452-82) and 0.06 µg of Rat IgG2b kappa Isotype Control, Brilliant Violet 650 (Product # 416-4031-81) (left) or 0.06 µg of CD11b Monoclonal Antibody, Brilliant Violet 650 (right). Total viable cells were used for analysis, as determined by LIVE/DEAD™ Fixable Far Red Dead Cell Stain Kit (Product # L34974).

For Research Use Only. Not for use in diagnostic procedures. Not for resale without express authorization. Products are warranted to operate or perform substantially in conformance with published Product specifications in effect at the time of sale, as set forth in the Production documentation, specifications and/or accompanying package inserts ("Documentation"). No claim of suitability for use in applications regulated by FDA is made. The warranty provided herein is valid only when used by properly trained individuals. Unless otherwise stated in the Documentation, this warranty is limited to one year from date of shipment when the Product is subjected to normal, proper and intended usage. This warranty does not extend to anyone other than the Buyer. Any model or sample furnished to Buyer is merely illustrative of the general type and quality of goods and does not represent that any Product will conform to such model or sample. NO OTHER WARRANTIES, EXPRESS OR IMPLIED, ARE GRANTED INCLUDING WITHOUT LIMITATION, IMPLIED WARRANTIES OF MERCHANTABILITY, FITNESS FOR ANY PARTICULAR PURPOSE, OR NON INFRINGEMENT. BUYER'S EXCLUSIVE REMEDY FOR NON-CONFORMING PRODUCTS DURING THE WARRANTY PERIOD IS LIMITED TO REPAIR, REPLACEMENT OF OR REFUND FOR THE NON-CONFORMING PRODUCT(S) AT SELLER'S SOLE OPTION. THERE IS NO OBLIGATION TO REPAIR, REPLACE OR REFUND FOR PRODUCTS AS THE RESULT OF (I) ACCIDENT, DISASTER OR EVENT OF FORCE MAJEURE, (II) MISUSE, FAULT OR NEGLIGENCE OF OR BY BUYER, (III) USE OF THE PRODUCTS IN A MANNER FOR WHICH THEY WERE NOT DESIGNED, OR (IV) IMPROPER STORAGE AND HANDLING OF THE PRODUCTS. Unless otherwise expressly stated on the Product or in the documentation accompanying the Product, the Product is intended for research only and is not to be used for any other purpose, including without limitation, unauthorized commercial uses, in vitro diagnostic uses, ex vivo or in vivo therapeutic uses, or any type of consumption by or application to human or animals.