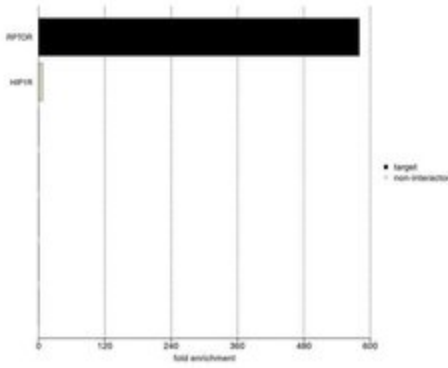


Raptor Polyclonal Antibody

Product Details	
Size	100 µg
Species Reactivity	Human, Mouse, Rat
Published Species	Rat, Mouse, Human
Host/Isotype	Rabbit / IgG
Class	Polyclonal
Type	Antibody
Conjugate	Unconjugated
Immunogen	Synthetic peptide derived from the C-terminal region of the human, mouse, and predicted rat raptor proteins
Form	Liquid
Concentration	0.25 mg/mL
Purification	Affinity chromatography
Storage buffer	PBS, pH 7.4
Contains	0.1% sodium azide
Storage Conditions	-20°C
RRID	AB_2533523

Applications	Tested Dilution	Publications
Western Blot (WB)	0.25 µg/ml	4 Publications
Immunohistochemistry (IHC)	-	1 Publication
Immunoprecipitation (IP)	Assay Dependent	1 Publication
Immunocytochemistry (ICC/IF)	2 µg/mL	1 Publication
Miscellaneous PubMed (Misc)	-	1 Publication

Advanced Verification Data



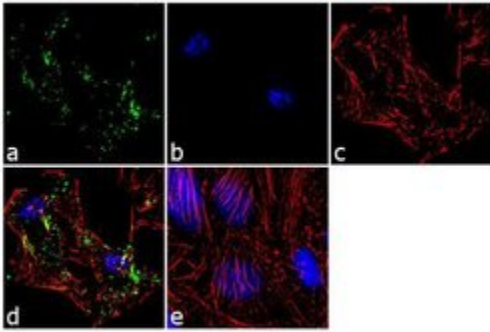
Raptor Antibody (42-4000)

IP-MS enrichment of RPTOR (LFQ intensity): RPTOR was enriched 580-fold from HCT116 lysate compared to background proteins, using the optimized IP-MS workflow with Pierce MS-Compatible Magnetic IP Kit protein A/G (Product # 90409) and RPTOR antibody (Product # 42-4000). The STRING database (www.string-db.org) was used to identify the protein interactor list. See more information on IP-MS verification of antibody selectivity. IP-MS validation info.

Product Images For Raptor Polyclonal Antibody

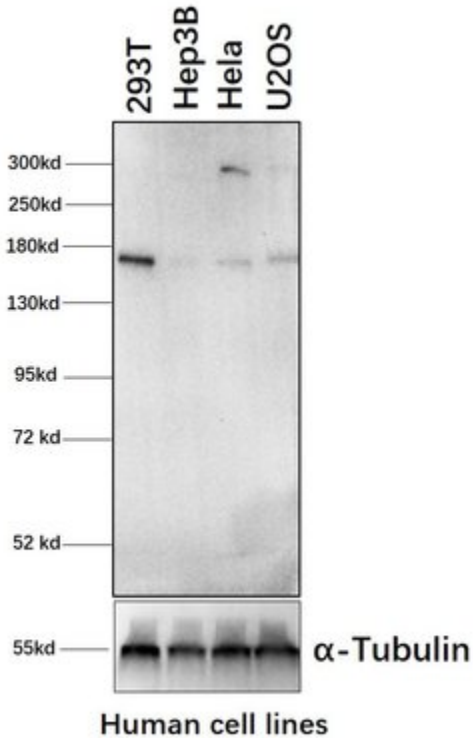
Raptor Antibody (42-4000) in ICC/IF

Immunofluorescence analysis of Raptor was performed using 70% confluent log phase HeLa cells. The cells were fixed with 4% paraformaldehyde for 10 minutes, permeabilized with 0.1% Triton™ X-100 for 10 minutes, and blocked with 2% BSA for 1 hour at room temperature. The cells were labeled with Raptor Rabbit Polyclonal Antibody (Product # 42-4000) at 2 µg/mL in 0.1% BSA and incubated for 3 hours at room temperature and then labeled with Goat anti-Rabbit IgG (H+L) Superclonal™ Secondary Antibody, Alexa Fluor® 488 conjugate (Product # A27034) a dilution of 1:2000 for 45 minutes at room temperature (Panel a: green). Nuclei (Panel b: blue) were stained with SlowFade® Gold Antifade Mountant with DAPI (Product # S36938). F-actin (Panel c: red) was stained with Alexa Fluor® 555 Rhodamine Phalloidin (Product # R415, 1:300). Panel d represents the merged image showing punctate cytoplasmic localization. Panel e shows the no primary antibody control. The images were captured at 60X magnification.



Raptor Antibody (42-4000) in WB

Western blot analysis of Raptor was performed by loading whole-cell lysates of four different human cell lines. Raptor was detected at approximately 150 kDa by using a Raptor polyclonal Antibody (Product # 42-4000) at a concentration of 0.25 µg/mL in Blocking Buffer overnight at 4°C on a rocking platform, followed by a 1-hour room-temperature incubation of a donkey anti-mouse IgG antibody at a dilution of 1:5,000. Data courtesy of Thermo Scientific KOL Program.



[View more figures on thermofisher.com](https://www.thermofisher.com)

8 References

Western Blot (4)

PloS one

Raptor is phosphorylated by cdc2 during mitosis.

"Published figure using Raptor polyclonal antibody (Product # 42-4000) in Immunoprecipitation"

Authors: Gwinn DM,Asara JM,Shaw RJ

Species
Human

Dilution
Not Cited

Year
2010

American journal of physiology. Renal physiology

Connexin 37 is localized in renal epithelia and responds to changes in dietary salt intake.

Authors: Stoessel A,Himmerkus N,Bleich M,Bachmann S,Theilig F

Species
Rat

Dilution
Not Cited

Year
2010

[View more WB references on thermofisher.com](#)

Immunohistochemistry (1)

American journal of physiology. Renal physiology

Connexin 37 is localized in renal epithelia and responds to changes in dietary salt intake.

Authors: Stoessel A,Himmerkus N,Bleich M,Bachmann S,Theilig F

Species
Rat

Dilution
Not Cited

Year
2010

Immunoprecipitation (1)

PloS one

Raptor is phosphorylated by cdc2 during mitosis.

"Published figure using Raptor polyclonal antibody (Product # 42-4000) in Immunoprecipitation"

Authors: Gwinn DM,Asara JM,Shaw RJ

Species
Human

Dilution
Not Cited

Year
2010

More applications with references on thermofisher.com

[ICC/IF \(1\)](#)

[Misc \(1\)](#)

For Research Use Only. Not for use in diagnostic procedures. Not for resale without express authorization. Products are warranted to operate or perform substantially in conformance with published Product specifications in effect at the time of sale, as set forth in the Production documentation, specifications and/or accompanying package inserts ("Documentation"). No claim of suitability for use in applications regulated by FDA is made. The warranty provided herein is valid only when used by properly trained individuals. Unless otherwise stated in the Documentation, this warranty is limited to one year from date of shipment when the Product is subjected to normal, proper and intended usage. This warranty does not extend to anyone other than the Buyer. Any model or sample furnished to Buyer is merely illustrative of the general type and quality of goods and does not represent that any Product will conform to such model or sample. NO OTHER WARRANTIES, EXPRESS OR IMPLIED, ARE GRANTED INCLUDING WITHOUT LIMITATION, IMPLIED WARRANTIES OF MERCHANTABILITY, FITNESS FOR ANY PARTICULAR PURPOSE, OR NON-INFRINGEMENT. BUYER'S EXCLUSIVE REMEDY FOR NON-CONFORMING PRODUCTS DURING THE WARRANTY PERIOD IS LIMITED TO REPAIR, REPLACEMENT OF OR REFUND FOR THE NON-CONFORMING PRODUCT(S) AT SELLER'S SOLE OPTION. THERE IS NO OBLIGATION TO REPAIR, REPLACE OR REFUND FOR PRODUCTS AS THE RESULT OF (I) ACCIDENT, DISASTER OR EVENT OF FORCE MAJEURE, (II) MISUSE, FAULT OR NEGLIGENCE OF OR BY BUYER, (III) USE OF THE PRODUCTS IN A MANNER FOR WHICH THEY WERE NOT DESIGNED, OR (IV) IMPROPER STORAGE AND HANDLING OF THE PRODUCTS. Unless otherwise expressly stated on the Product or in the documentation accompanying the Product, the Product is intended for research only and is not to be used for any other purpose, including without limitation, unauthorized commercial uses, in vitro diagnostic uses, ex vivo or in vivo therapeutic uses, or any type of consumption by or application to human or animals.