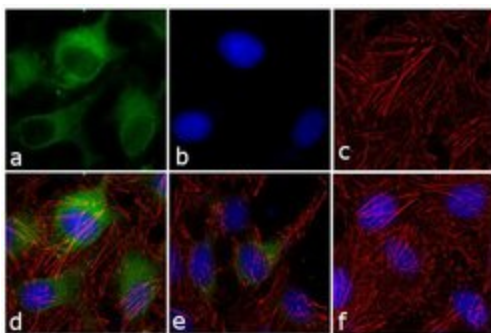


NDRG1 Polyclonal Antibody

Product Details	
Size	100 µg
Species Reactivity	Human, Mouse
Published Species	Human
Host/Isotope	Rabbit / IgG
Class	Polyclonal
Type	Antibody
Conjugate	Unconjugated
Immunogen	Synthetic peptide derived from the N-terminal region of the human and predicted chimpanzee CAP43 proteins, which differs from predicted bovine by one amino acid change and from mouse and rat by two amino acid changes
Form	Liquid
Concentration	0.25 mg/mL
Purification	Antigen affinity chromatography
Storage buffer	PBS, pH 7.4
Contains	0.1% sodium azide
Storage Conditions	-20°C
RRID	AB_2533532

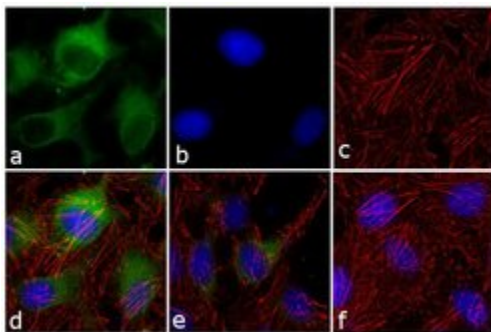
Applications	Tested Dilution	Publications
Immunocytochemistry (ICC)	2 µg/mL	1 Publication
Immunofluorescence (IF)	2 µg/mL	1 Publication
Immunoprecipitation (IP)	5 µg	-
Western Blot (WB)	1-3 µg/mL	9 Publications
Miscellaneous PubMed (Misc)	-	1 Publication



NDRG1 Antibody (42-6200)

Modulation of expression of target protein by cell treatment to demonstrate antibody specificity. Immunofluorescence analysis of CAP43 using anti CAP43 (NDRG1) Polyclonal Antibody (Product # 42-6200) shows increased expression of CAP43 in HeLa cells treated with TNF alpha. Cell treatment validation info.

Product Images For NDRG1 Polyclonal Antibody

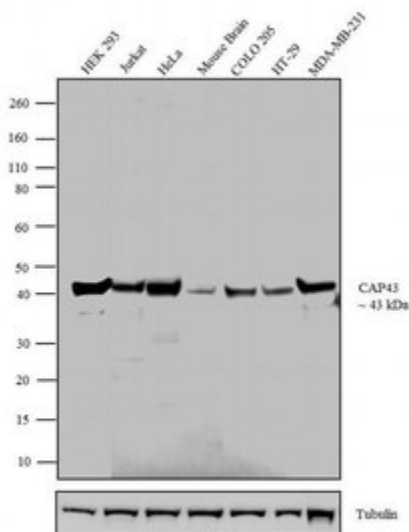


NDRG1 Antibody (42-6200) in IF

Immunofluorescent analysis of CAP43 was performed using 70% confluent log phase HeLa cells treated with 50 ng of TNF-alpha for 20 minutes. The cells were fixed with 4% paraformaldehyde for 10 minutes, permeabilized with 0.1% Triton™ X-100 for 10 minutes, and blocked with 1% BSA for 1 hour at room temperature. The cells were labeled with CAP43 Rabbit Polyclonal Antibody (Product # 42-6200) at 2 µg/mL in 0.1% BSA and incubated for 3 hours at room temperature and then labeled with Goat anti-Rabbit IgG (H+L) Superclonal™ Secondary Antibody, Alexa Fluor® 488 conjugate (Product # A27034) a dilution of 1:2000 for 45 minutes at room temperature (Panel a: green). Nuclei (Panel b: blue) were stained with SlowFade® Gold Antifade Mountant with DAPI (Product # S36938). F-actin (Panel c: red) was stained with Alexa Fluor® 555 Rhodamine Phalloidin (Product # R415, 1:300). Panel d represents the merged image showing cytoplasmic localization. Panel e is untreated cell with less signal. Panel f represents control cells with no primary antibody to assess background. The images were captured at 60X magnification.

NDRG1 Antibody (42-6200) in WB

Western blot analysis was performed on whole cell extracts (30 µg lysate) of HEK 293 (Lane 1), Jurkat (Lane 2), HeLa (Lane 3), Mouse Brain (tissue extract) (Lane 4), COLO 205 (Lane 5), HT-29 (Lane 6) and MDA-MB-231 (Lane 7). The blot was probed with Anti-CAP43 Rabbit Polyclonal Antibody (Product # 42-6200, 1-3 µg/mL) and detected by chemiluminescence using Goat anti-Rabbit IgG (H+L) Superclonal™ Secondary Antibody, HRP conjugate (Product # A27036, 0.4 µg/mL, 1:2500 dilution). A 43 kDa band corresponding to CAP43 was observed across the cell lines and tissue tested. Known quantity of protein samples were electrophoresed using Novex® NuPAGE® 10 % Bis-Tris gel (Product # NP0302BOX), XCell SureLock™ Electrophoresis System (Product # EI0002) and Novex® Sharp Pre-Stained Protein Standard (Product # LC5800). Resolved proteins were then transferred onto a nitrocellulose membrane with iBlot® 2 Dry Blotting System (Product # IB21001). The membrane was probed with the relevant primary and secondary Antibody using iBind™ Flex Western Starter Kit (Product # SLF2000S). Chemiluminescent detection was performed using Pierce™ ECL Western Blotting Substrate (Product # 32106).



12 References

Western Blot (9)

International journal of molecular sciences

The Iron Chelator, Dp44mT, Effectively Inhibits Human Oral Squamous Cell Carcinoma Cell Growth in Vitro and in Vivo.

"42-6200 was used in western blot determine the effects of iron chelators on oral squamous cell carcinoma cells"

Authors: Lee JC,Chiang KC,Feng TH,Chen YJ,Chuang ST,Tsui KH,Chung LC,Juang HH

Species
Human

Dilution
Not Cited

Year
2016

Cancer letters

Prostate-derived ets factor represses tumorigenesis and modulates epithelial-to-mesenchymal transition in bladder carcinoma cells.

"42-6200 was used in western blot to analyze repression of tumorigenesis and modulation of epithelial-to-mesenchymal transition in bladder carcinoma cells by prostate-derived ets factor"

Authors: Tsui KH,Lin YH,Chung LC,Chuang ST,Feng TH,Chiang KC,Chang PL,Yeh CJ,Juang HH

Species
Not Applicable

Dilution
Not Cited

Year
2016

[View more WB references on thermofisher.com](#)

Immunofluorescence (1)

Placenta

N-myc downstream-regulated gene 1 (NDRG1) mediates pomegranate juice protection from apoptosis in hypoxic BeWo cells but not in primary human trophoblasts.

"42-6200 was used in immunocytochemistry to test if pomegranate juice protects trophoblasts from hypoxia-induced apoptosis by modulating NDRG1 expression."

Authors: Chen B,Zaveri PG,Longtine MS,Nelson DM

Species
Human

Dilution
1:200

Year
2015

Miscellaneous PubMed (1)

Placenta

N-myc downstream-regulated gene 1 (NDRG1) mediates pomegranate juice protection from apoptosis in hypoxic BeWo cells but not in primary human trophoblasts.

"42-6200 was used in immunocytochemistry to test if pomegranate juice protects trophoblasts from hypoxia-induced apoptosis by expression."

Authors: Chen B,Zaveri PG,Longtine MS,Nelson DM

Species
Human

Dilution
1:200

Year
2015

More applications with references on thermofisher.com

ICC (1)

For Research Use Only. Not for use in diagnostic procedures. Not for resale without express authorization. Products are warranted to operate or perform substantially in conformance with published Product specifications in effect at the time of sale, as set forth in the Production documentation, specifications and/or accompanying package inserts ("Documentation"). No claim of suitability for use in applications regulated by FDA is made. The warranty provided herein is valid only when used by properly trained individuals. Unless otherwise stated in the Documentation, this warranty is limited to one year from date of shipment when the Product is subjected to normal, proper and intended usage. This warranty does not extend to anyone other than the Buyer. Any model or sample furnished to Buyer is merely illustrative of the general type and quality of goods and does not represent that any Product will conform to such model or sample. NO OTHER WARRANTIES, EXPRESS OR IMPLIED, ARE GRANTED INCLUDING WITHOUT LIMITATION, IMPLIED WARRANTIES OF MERCHANTABILITY, FITNESS FOR ANY PARTICULAR PURPOSE, OR NON-INFRINGEMENT. BUYER'S EXCLUSIVE REMEDY FOR NON-CONFORMING PRODUCTS DURING THE WARRANTY PERIOD IS LIMITED TO REPAIR, REPLACEMENT OF OR REFUND FOR THE NON-CONFORMING PRODUCT(S) AT SELLER'S SOLE OPTION. THERE IS NO OBLIGATION TO REPAIR, REPLACE OR REFUND FOR PRODUCTS AS THE RESULT OF (I) ACCIDENT, DISASTER OR EVENT OF FORCE MAJEURE, (II) MISUSE, FAULT OR NEGLIGENCE OF OR BY BUYER, (III) USE OF THE PRODUCTS IN A MANNER FOR WHICH THEY WERE NOT DESIGNED, OR (IV) IMPROPER STORAGE AND HANDLING OF THE PRODUCTS. Unless otherwise expressly stated on the Product or in the documentation accompanying the Product, the Product is intended for research only and is not to be used for any other purpose, including without limitation, unauthorized commercial uses, in vitro diagnostic uses, ex vivo or in vivo therapeutic uses, or any type of consumption by or application to human or animals.