

Acetyl-CoA Carboxylase Monoclonal Antibody (143)

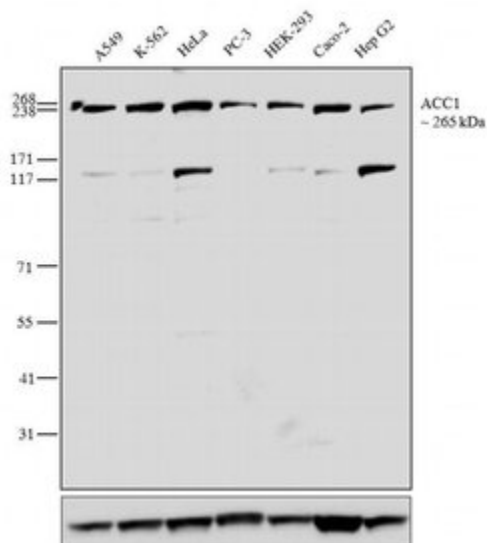
Product Details	
Size	100 µg
Species Reactivity	Human
Host/Isotype	Mouse / IgG1
Class	Monoclonal
Type	Antibody
Clone	143
Conjugate	Unconjugated
Immunogen	Recombinant protein derived from the C-terminus of human Acetyl CoA Carboxylase 1 (ACC-1) protein (accession # Q13085, NP_942131), which is identical to chimpanzee. This protein is also 99% similar to Rhesus monkey, 96% similar to pig and bovine and 95% similar to mouse and rat.
Form	Liquid
Concentration	0.5 mg/mL
Purification	Protein A
Storage buffer	PBS, pH 7.4
Contains	0.1% sodium azide
Storage Conditions	-20°C
RRID	AB_2532219

Applications	Tested Dilution	Publications
ELISA (ELISA)	Assay Dependent	-
Immunocytochemistry (ICC)	Assay Dependent	-
Immunofluorescence (IF)	Assay Dependent	-
Immunoprecipitation (IP)	Assay Dependent	-
Western Blot (WB)	1-3 µg/mL	-

Product Images For Acetyl-CoA Carboxylase Monoclonal Antibody (143)

Acetyl-CoA Carboxylase Antibody (437100) in WB

Western blot analysis of ACC1 was performed using membrane enriched extracts (30 µg lysate) of A549 (Lane 1), K-562 (Lane 2), HeLa (Lane 3), PC-3 (Lane 4), HEK-293 (Lane 5), Caco-2 (Lane 6) and Hep G2 (Lane 7). The blots were probed with Anti-ACC1 Mouse monoclonal Antibody (Product # 437100, 1-3 µg/mL) and detected by chemiluminescence using Goat anti-Mouse IgG (H+L) Superclonal™ Secondary Antibody, HRP conjugate (Product # A28177, 0.4 µg/mL, 1:2500 dilution). A 265 kDa band corresponding to ACC1 were observed across the cell lines tested. Along with the desired bands, non-specific bands at 120 kDa were observed across cell lines, except PC-3. Known quantity of protein samples were electrophoresed using Novex® NuPAGE® 4-12 % Bis-Tris gel (Product # NP0322BOX), XCell SureLock™ Electrophoresis System (Product # EI0002) and HiMark™ Pre-stained Protein Standard (Product # LC5699). Resolved proteins were then transferred onto a nitrocellulose membrane with overnight wet transfer System. The membrane was probed with the relevant primary and secondary Antibody following blocking with 5% skimmed milk. Chemiluminescent detection was performed using Pierce™ ECL Western Blotting Substrate (Product # 32106).



For Research Use Only. Not for use in diagnostic procedures. Not for resale without express authorization. Products are warranted to operate or perform substantially in conformance with published Product specifications in effect at the time of sale, as set forth in the Production documentation, specifications and/or accompanying package inserts ("Documentation"). No claim of suitability for use in applications regulated by FDA is made. The warranty provided herein is valid only when used by properly trained individuals. Unless otherwise stated in the Documentation, this warranty is limited to one year from date of shipment when the Product is subjected to normal, proper and intended usage. This warranty does not extend to anyone other than the Buyer. Any model or sample furnished to Buyer is merely illustrative of the general type and quality of goods and does not represent that any Product will conform to such model or sample. NO OTHER WARRANTIES, EXPRESS OR IMPLIED, ARE GRANTED INCLUDING WITHOUT LIMITATION, IMPLIED WARRANTIES OF MERCHANTABILITY, FITNESS FOR ANY PARTICULAR PURPOSE, OR NON INFRINGEMENT. BUYER'S EXCLUSIVE REMEDY FOR NON-CONFORMING PRODUCTS DURING THE WARRANTY PERIOD IS LIMITED TO REPAIR, REPLACEMENT OF OR REFUND FOR THE NON-CONFORMING PRODUCT(S) AT SELLER'S SOLE OPTION. THERE IS NO OBLIGATION TO REPAIR, REPLACE OR REFUND FOR PRODUCTS AS THE RESULT OF (I) ACCIDENT, DISASTER OR EVENT OF FORCE MAJEURE, (II) MISUSE, FAULT OR NEGLIGENCE OF OR BY BUYER, (III) USE OF THE PRODUCTS IN A MANNER FOR WHICH THEY WERE NOT DESIGNED, OR (IV) IMPROPER STORAGE AND HANDLING OF THE PRODUCTS. Unless otherwise expressly stated on the Product or in the documentation accompanying the Product, the Product is intended for research only and is not to be used for any other purpose, including without limitation, unauthorized commercial uses, in vitro diagnostic uses, ex vivo or in vivo therapeutic uses, or any type of consumption by or application to human or animals.