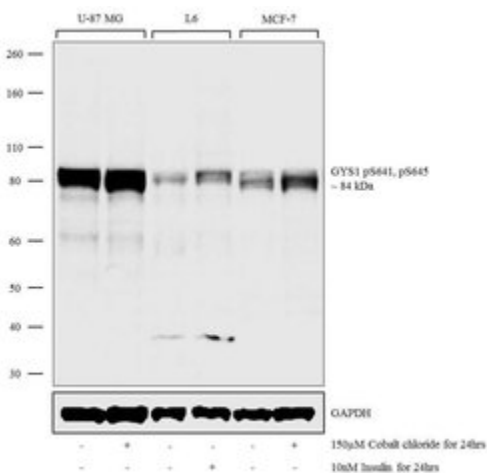


# Phospho-GYS1 (Ser641, Ser645) Polyclonal Antibody

Product Details	
Size	100 µL
Species Reactivity	Human, Mouse, Rat
Published Species	Rat, Human, Mouse
Host/Isotype	Rabbit / IgG
Class	Polyclonal
Type	Antibody
Conjugate	Unconjugated
Immunogen	The antiserum was produced against a chemically synthesized phosphopeptide derived from the region of human Glycogen Synthase that contains serine 641 and serine 645. The sequence is conserved in human, mouse and rat.
Form	Liquid
Purification	Antigen affinity chromatography
Storage buffer	Dulbecco's PBS, pH 7.3, with 50% glycerol, 1mg/mL BSA
Contains	0.05% sodium azide
Storage Conditions	-20°C
RRID	AB_2533572

Applications	Tested Dilution	Publications
Western Blot (WB)	1:500-1:1000	4 Publications

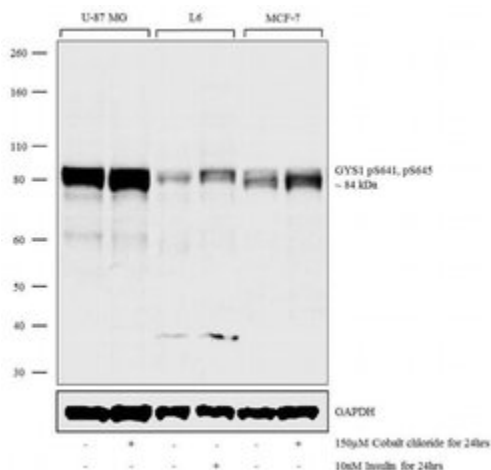
## Advanced Verification Data



### Phospho-GYS1 (Ser641, Ser645) Antibody (44-1092G)

Altered expression of target protein upon cell treatment demonstrates antibody specificity. Western blot using Anti-Phospho-GYS1 (Ser641, Ser645) Antibody (Product # 44-1092G) shows increase of GYS1 phosphorylation at Ser641 and Ser645 residues in U-87 MG, MCF-7 and L6 cell lines upon Cobalt chloride and Insulin treatments respectively. Cell treatment validation info.

## Product Images For Phospho-GYS1 (Ser641, Ser645) Polyclonal Antibody

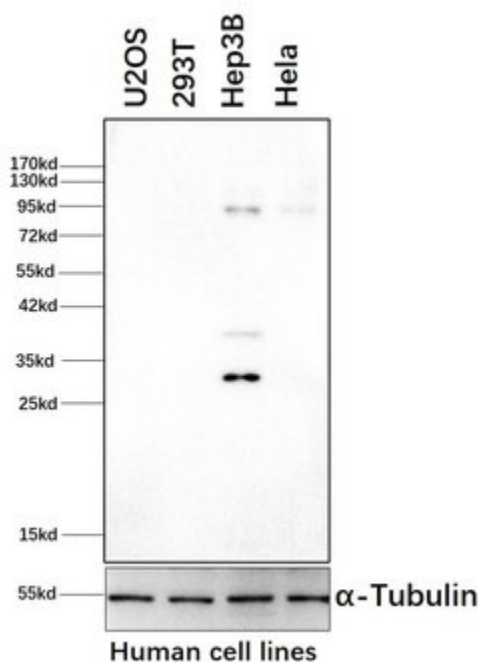


### Phospho-GYS1 (Ser641, Ser645) Antibody (44-1092G) in WB

Western blot analysis was performed on whole cell extracts (30 µg lysate) of U-87 MG (Lane 1), U-87 MG treated with Cobalt chloride (150µM for 24hrs) (Lane 2), L6 (Lane 3), L6 treated with Insulin (10nM for 24hrs) (Lane 4), MCF-7 (Lane 5) and MCF-7 treated with Cobalt chloride (Lane 6). The blot was probed with Anti-Phospho-GYS1 (Ser641, Ser645) Antibody (Product # 44-1092G, 1:500 dilution) and detected by chemiluminescence using Goat anti-Rabbit IgG (H+L) Superclonal™ Secondary Antibody, HRP conjugate (Product # A27036, 0.25 µg/mL, 1:4000 dilution). A 84 kDa band corresponding to Phospho-GYS1 (Ser641, Ser645) was observed across the cell lines tested.

### Phospho-GYS1 (Ser641, Ser645) Antibody (44-1092G) in WB

Western blot analysis of Phospho-GYS1 at Ser641, Ser645 was performed by loading whole-cell lysates of four different human cell lines. Phospho-GYS1 was detected at approximately 85kDa by using a Phospho-GYS1 polyclonal Antibody (Product # 44-1092G) at a dilution of 1:500 in Blocking Buffer overnight at 4°C on a rocking platform, followed by a 1-hour room-temperature incubation of a donkey anti-rabbit IgG antibody at a dilution of 1:5000. Data courtesy of Thermo Scientific KOL Program.



View more figures on [thermofisher.com](http://thermofisher.com)

### Western Blot (4)

The Journal of biological chemistry

#### Translocation of glycogen synthase kinase-3 (GSK-3), a trigger of permeability transition, is kinase activity-dependent and mediated by interaction with voltage-dependent anion channel 2 (VDAC2).

"44-1092G was used in western blot to examine the mechanism of translocation in regards to glycogen synthase kinase-3 protein"

Authors: Tanno M, Kuno A, Ishikawa S, Miki T, Kouzu H, Yano T, Murase H, Tobisawa T, Ogasawara M, Horio Y, Miura T

**Species**  
Human  
Not Applicable

**Dilution**  
Not Cited  
Not Cited

**Year**  
2014

Circulation research

#### Glycogen synthase kinase-3 inactivation is not required for ischemic preconditioning or postconditioning in the mouse.

"44-1092G was used in Western Blotting to show that the inhibition of glycogen synthase kinase-3beta is unlikely to be the key determinant of cardioprotective signalling in either preconditioning or postconditioning in the mouse."

Authors: Nishino Y, Webb IG, Davidson SM, Ahmed AI, Clark JE, Jacquet S, Shah AM, Miura T, Yellon DM, Avkiran M, Marber MS

**Species**  
Mouse

**Dilution**  
1:1,000

**Year**  
2008

[View more WB references on thermofisher.com](#)

For Research Use Only. Not for use in diagnostic procedures. Not for resale without express authorization. Products are warranted to operate or perform substantially in conformance with published Product specifications in effect at the time of sale, as set forth in the Production documentation, specifications and/or accompanying package inserts ("Documentation"). No claim of suitability for use in applications regulated by FDA is made. The warranty provided herein is valid only when used by properly trained individuals. Unless otherwise stated in the Documentation, this warranty is limited to one year from date of shipment when the Product is subjected to normal, proper and intended usage. This warranty does not extend to anyone other than the Buyer. Any model or sample furnished to Buyer is merely illustrative of the general type and quality of goods and does not represent that any Product will conform to such model or sample. NO OTHER WARRANTIES, EXPRESS OR IMPLIED, ARE GRANTED INCLUDING WITHOUT LIMITATION, IMPLIED WARRANTIES OF MERCHANTABILITY, FITNESS FOR ANY PARTICULAR PURPOSE, OR NON INFRINGEMENT. BUYER'S EXCLUSIVE REMEDY FOR NON-CONFORMING PRODUCTS DURING THE WARRANTY PERIOD IS LIMITED TO REPAIR, REPLACEMENT OF OR REFUND FOR THE NON-CONFORMING PRODUCT(S) AT SELLER'S SOLE OPTION. THERE IS NO OBLIGATION TO REPAIR, REPLACE OR REFUND FOR PRODUCTS AS THE RESULT OF (I) ACCIDENT, DISASTER OR EVENT OF FORCE MAJEURE, (II) MISUSE, FAULT OR NEGLIGENCE OF OR BY BUYER, (III) USE OF THE PRODUCTS IN A MANNER FOR WHICH THEY WERE NOT DESIGNED, OR (IV) IMPROPER STORAGE AND HANDLING OF THE PRODUCTS. Unless otherwise expressly stated on the Product or in the documentation accompanying the Product, the Product is intended for research only and is not to be used for any other purpose, including without limitation, unauthorized commercial uses, in vitro diagnostic uses, ex vivo or in vivo therapeutic uses, or any type of consumption by or application to human or animals.