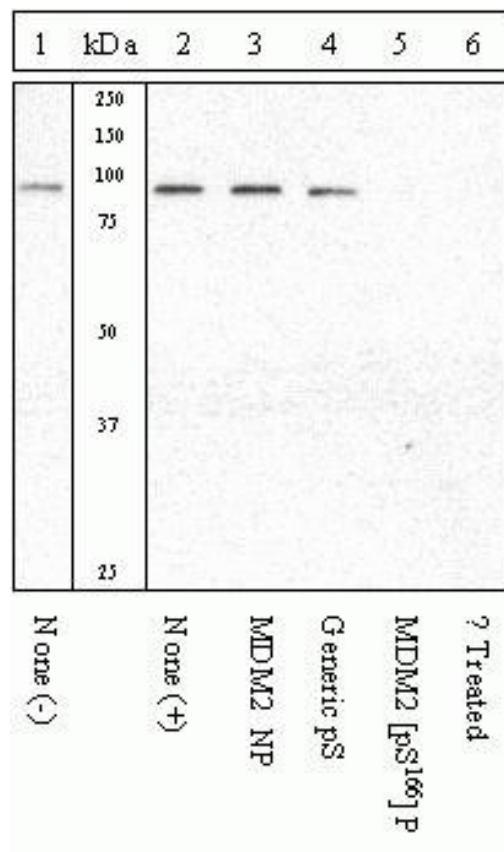


# Phospho-MDM2 (Ser166) Polyclonal Antibody

Product Details	
Size	100 µL
Species Reactivity	Human, Mouse
Host/Isotype	Rabbit / IgG
Class	Polyclonal
Type	Antibody
Conjugate	Unconjugated
Immunogen	Chemically synthesized phosphopeptide derived from the region of human MDM2 that contains serine 166.
Form	Liquid
Purification	Antigen affinity chromatography
Storage buffer	Dulbecco's PBS, pH 7.3, with 1mg/mL BSA
Contains	0.05% sodium azide
Storage conditions	-20°C
RRID	AB_2533600

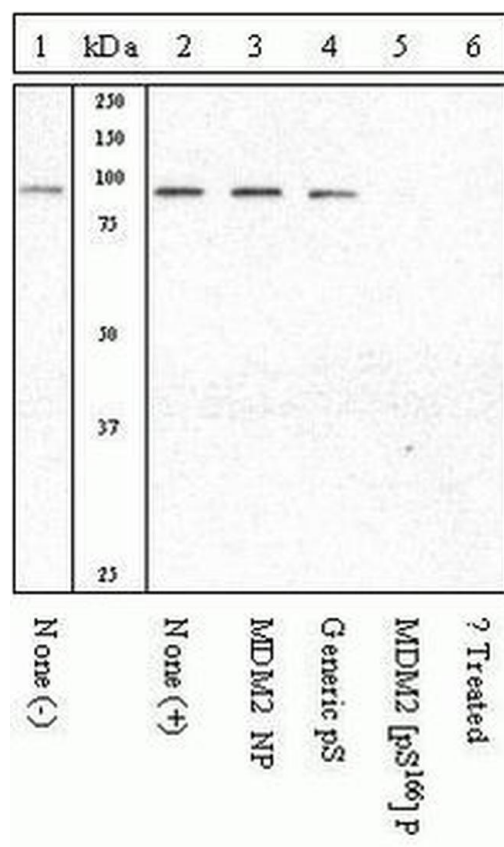
Applications	Tested Dilution	Publications
Western Blot (WB)	1:1,000	-
Immunohistochemistry (Paraffin) (IHC (P))	1:20	-

## Product Images For Phospho-MDM2 (Ser166) Polyclonal Antibody



### Phospho-MDM2 (Ser166) Antibody (44-1400G) in WB

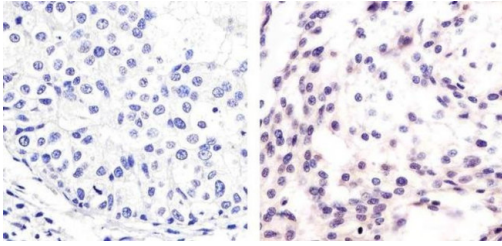
Cell lysates prepared from MCF7 cells left untreated (1) or treated with IGF-1 (2-6) were resolved by SDS-PAGE transferred to PVDF. The membrane was left untreated (1-5) or treated with Lambda phosphatase (6), blocked with a 5% BSA-TBST buffer for one hour at room temperature, and then incubated with the rabbit anti-MDM2 (pS166) antibody (Product # 44-1400G) for two hours at room temperature, following prior incubation with: no peptide (2), the non-phosphopeptide corresponding to the phosphopeptide immunogen (3), a generic phosphoserine containing peptide (4), or the phosphopeptide immunogen (5). After washing, the membrane was incubated with goat F (ab')<sub>2</sub> anti-rabbit IgG HRP conjugate (Product # ALI4404) and signals were detected using a chemiluminescent method.



### Phospho-MDM2 (Ser166) Antibody (44-1400G)

Altered expression of proteins upon cell treatment demonstrates antibody specificity. Western blot analysis of Phospho-MDM2 (Ser166) using Phospho-MDM2 (Ser166) Rabbit Polyclonal Antibody (Product # 44-1400G) shows induction of phosphorylation of MDM2 in MCF-7 cells treated with IGF1. {TM}

### Phospho-MDM2 (Ser166) Antibody (44-1400G) in IHC (P)



Immunohistochemistry analysis of Phospho-MDM2 (pSer166) showing nucleus and weak cytoplasmic staining of paraffin-embedded human breast carcinoma (right) compared to a negative control without primary antibody (left). To expose target proteins, antigen retrieval was performed using 10mM sodium citrate (pH 6.0), microwaved for 8-15 min. Following antigen retrieval, tissues were blocked in 3% H<sub>2</sub>O<sub>2</sub>-methanol for 15 min at room temperature, washed with ddH<sub>2</sub>O and PBS, and then probed with a Anti- Phospho-MDM2 (pSer166) Polyclonal Antibody (Product # 44-1400G) diluted in 3% BSA-PBS at a dilution of 1:20 overnight at 4°C in a humidified chamber. Tissues were washed extensively in PBST and detection was performed using an HRP-conjugated secondary antibody followed by colorimetric detection using a DAB kit. Tissues were counterstained with hematoxylin and dehydrated with ethanol and xylene to prep for mounting.

[View more figures on thermofisher.com](#)

For Research Use Only. Not for use in diagnostic procedures. Not for resale without express authorization. Products are warranted to operate or perform substantially in conformance with published Product specifications in effect at the time of sale, as set forth in the Production documentation, specifications and/or accompanying package inserts ("Documentation"). No claim of suitability for use in applications regulated by FDA is made. The warranty provided herein is valid only when used by properly trained individuals. Unless otherwise stated in the Documentation, this warranty is limited to one year from date of shipment when the Product is subjected to normal, proper and intended usage. This warranty does not extend to anyone other than the Buyer. Any model or sample furnished to Buyer is merely illustrative of the general type and quality of goods and does not represent that any Product will conform to such model or sample. NO OTHER WARRANTIES, EXPRESS OR IMPLIED, ARE GRANTED INCLUDING WITHOUT LIMITATION, IMPLIED WARRANTIES OF MERCHANTABILITY, FITNESS FOR ANY PARTICULAR PURPOSE, OR NON-INFRINGEMENT. BUYER'S EXCLUSIVE REMEDY FOR NON-CONFORMING PRODUCTS DURING THE WARRANTY PERIOD IS LIMITED TO REPAIR, REPLACEMENT OF OR REFUND FOR THE NON-CONFORMING PRODUCT(S) AT SELLER'S SOLE OPTION. THERE IS NO OBLIGATION TO REPAIR, REPLACE OR REFUND FOR PRODUCTS AS THE RESULT OF (I) ACCIDENT, DISASTER OR EVENT OF FORCE MAJEURE, (II) MISUSE, FAULT OR NEGLIGENCE OF OR BY BUYER, (III) USE OF THE PRODUCTS IN A MANNER FOR WHICH THEY WERE NOT DESIGNED, OR (IV) IMPROPER STORAGE AND HANDLING OF THE PRODUCTS. Unless otherwise expressly stated on the Product or in the documentation accompanying the Product, the Product is intended for research only and is not to be used for any other purpose, including without limitation, unauthorized commercial uses, in vitro diagnostic uses, ex vivo or in vivo therapeutic uses, or any type of consumption by or application to human or animals.